

GMP PE anti-human CD56 (NCAM) Antibody

Catalog# / Size	260030 / 100 tests
Clone	5.1H11
Other Names	Leu-19, NKH1, NCAM-1
Isotype	Mouse IgG1, κ
Description	CD56 is a single transmembrane glycoprotein also known as NCAM (neural cell adhesion molecule), Leu-19, or NKH1. It is a member of the Ig superfamily. The 140 kD isoform is expressed on NK and NKT cells. CD56 is also expressed in the brain (cerebellum and cortex) and at neuromuscular junctions. Certain large granular lymphocyte (LGL) leukemias, small-cell lung carcinomas, neuronal derived tumors, myelomas, and myeloid leukemias also express CD56. CD56 plays a role in homophilic and heterophilic adhesion via binding to itself or heparan sulfate.

Product Details

Reactivity	Human
Antibody Type	Monoclonal
Host Species	Mouse
Immunogen	Human myotube cells
Formulation	Phosphate-buffered solution, pH 7.2, containing 0.09% sodium azide and 0.2% (w/v) BSA (origin USA)
Preparation	The antibody was purified by affinity chromatography and conjugated with PE under optimal conditions.
Concentration	100 μ g/mL
Storage & Handling	The antibody solution should be stored undiluted between 2°C and 8°C, and protected from prolonged exposure to light. Do not freeze.
Application	FC - Quality tested
Recommended Usage	Each lot of this antibody is quality control tested by immunofluorescent staining with flow cytometric analysis . For flow cytometric staining, the suggested use of this reagent is 5 μ L per million cells in 100 μ L staining volume or 5 μ L per 100 μ L of whole blood. It is recommended that the reagent be titrated for optimal performance for each application.
Excitation Laser	Blue Laser (488 nm) Green Laser (532 nm)/Yellow-Green Laser (561 nm)
Application References	1. Walsh FS, et al. 1981. Nature 289:60. (FC) 2. Pavlath GK, et al. 1986. J. Cell Biol. 102:124. (FC) 3. Pavlath GK, et al. 1989. Nature 337:570. (FC) 4. Pulido R, et al. 1988. J. Immunol. 140:3851. (FC)
(PubMed link indicates BioLegend citation)	
Disclaimer	GMP RUO Flow Cytometry Antibodies. BioLegend GMP RUO fluorophore conjugated antibodies are manufactured in a dedicated GMP facility and compliant with ISO 13485:2016. For research use only. Not for use in diagnostic or therapeutic procedures. Our processes include: <ul style="list-style-type: none"> • Batch-to-batch consistency • Material traceability • Documented procedures • Documented employee training • Equipment maintenance and monitoring records • Lot-specific certificates of analysis • Quality audits per ISO 13485:2016

- QA review of released products

Antigen Details

Structure	lg superfamily, single transmembrane or GPI-anchored glycoprotein
Distribution	NK cells, T subset, neural tissue, some LGL and myeloid leukemias
Function	Adhesion
Ligand/Receptor	Heparan sulfate
Antigen References	1. Lanier L, et al. 1991. J. Immunol. 146:4421 2. Hemperly J, et al. 1990. J. Mol. Neurosci. 2:71 3. Cremer H, et al. 1994. Nature 367:455.
Gene ID	4684

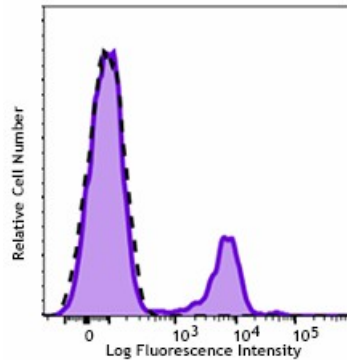
Related Protocols

[Cell Surface Flow Cytometry Staining Protocol](#)

Other Formats

Purified anti-human CD56 (NCAM), APC anti-human CD56 (NCAM), PerCP/Cyanine5.5 anti-human CD56 (NCAM), PE anti-human CD56 (NCAM), PE/Cyanine7 anti-human CD56 (NCAM), APC/Cyanine7 anti-human CD56 (NCAM), PE/Cyanine5 anti-human CD56 (NCAM), Alexa Fluor® 647 anti-human CD56 (NCAM), Alexa Fluor® 488 anti-human CD56 (NCAM), Pacific Blue™ anti-human CD56 (NCAM), Alexa Fluor® 700 anti-human CD56 (NCAM), PerCP anti-human CD56 (NCAM), Brilliant Violet 650™ anti-human CD56 (NCAM), Brilliant Violet 510™ anti-human CD56 (NCAM), Brilliant Violet 421™ anti-human CD56 (NCAM), Biotin anti-human CD56 (NCAM), Brilliant Violet 605™ anti-human CD56 (NCAM), Brilliant Violet 570™ anti-human CD56 (NCAM), Brilliant Violet 711™ anti-human CD56 (NCAM), PE/Dazzle™ 594 anti-human CD56 (NCAM), FITC anti-human CD56 (NCAM), Brilliant Violet 785™ anti-human CD56 (NCAM), Ultra-LEAF™ Purified anti-human CD56 (NCAM), APC/Fire™ 750 anti-human CD56 (NCAM), Brilliant Violet 750™ anti-human CD56 (NCAM), TotalSeq™-A0047 anti-human CD56 (NCAM), TotalSeq™-C0047 anti-human CD56 (NCAM), TotalSeq™-B0047 anti-human CD56 (NCAM), Spark NIR™ 685 anti-human CD56 (NCAM), KIRAVIA Blue 520™ anti-human CD56 (NCAM)

Product Data



Typical results from human peripheral blood lymphocytes stained either with 5.1H11 PE used at 5 μ L/test (filled histogram) or with an isotype control (open histogram).

Symbols Glossary*

Symbol	Meaning	Symbol Title	Symbol No.	Symbol	Meaning	Symbol Title	Symbol No.
	Catalog number	Catalogue number	5.1.6		Indicates the need for the user to consult the instructions for use.	Consult instructions for use	5.4.3
	Indicates the temperature limits to which the medical device can be safely exposed.	Temperature limit	5.3.7		Indicates a medical device that needs protection from light sources.	Keep away from sunlight	5.3.2
	Indicates the upper limit of temperature to which the medical device can be safely exposed.	Upper limit of temperature	5.3.6		Indicates the date after which the medical device is not to be used.	Use-by date	5.1.4
	Indicates the medical device manufacturer.	Manufacturer	5.1.1		Indicates the authorized representative in the European Community.	Authorized representative in the European Community	5.1.2
	Indicates the manufacturer's batch code so that the batch or lot can be identified.	Batch code	5.1.5		Indicates a medical device that is intended to be used as an in vitro diagnostic medical device.	<i>In vitro</i> diagnostic medical device	5.5.1

* Symbol information is from EN ISO 15223-1:2016 Medical devices – Symbols to be used with medical device labels, labelling and information to be supplied – Part 1: General requirements

For research use only. Not for resale. BioLegend will not be held responsible for patent infringement or other violations that may occur with the use of our products.

*These products may be covered by one or more Limited Use Label Licenses (see the BioLegend Catalog or our website, www.biolegend.com/ordering#license). BioLegend products may not be transferred to third parties, resold, modified for resale, or used to manufacture commercial products, reverse engineer functionally similar materials, or to provide a service to third parties without written approval of BioLegend. By use of these products you accept the terms and conditions of all applicable Limited Use Label Licenses.

BioLegend Inc., 8999 BioLegend Way, San Diego, CA 92121 www.biolegend.com
Toll-Free Phone: 1-877-Bio-Legend (246-5343) Phone: (858) 768-5800 Fax: (877) 455-9587