

## GMP PerCP/Cyanine5.5 anti-human CD19 Antibody

<b>Catalog# / Size</b>	260116 / 100 tests
<b>Clone</b>	H1B19
<b>Other Names</b>	B4
<b>Isotype</b>	Mouse IgG1, κ
<b>Description</b>	CD19 is a 95 kD type I transmembrane glycoprotein also known as B4. It is a member of the immunoglobulin superfamily expressed on B-cells (from pro-B to blastoid B cells, absent on plasma cells) and follicular dendritic cells. CD19 is involved in B cell development, activation, and differentiation. CD19 forms a complex with CD21 (CR2) and CD81 (TAPA-1), and functions as a BCR co-receptor.

### Product Details

<b>Reactivity</b>	Human
<b>Antibody Type</b>	Monoclonal
<b>Host Species</b>	Mouse
<b>Formulation</b>	Phosphate-buffered solution, pH 7.2, containing True-Stain Monocyte Blocker™, 0.09% sodium azide and 0.2% (w/v) BSA (origin USA).
<b>Preparation</b>	The antibody was purified by affinity chromatography and conjugated with PerCP/Cyanine5.5 under optimal conditions.
<b>Concentration</b>	100 µg/mL
<b>Storage &amp; Handling</b>	The antibody solution should be stored undiluted between 2°C and 8°C, and protected from prolonged exposure to light. <b>Do not freeze.</b>
<b>Application</b>	<a href="#">FC - Quality tested</a>
<b>Recommended Usage</b>	Each lot of this antibody is quality control tested by <a href="#">immunofluorescent staining with flow cytometric analysis</a> . For flow cytometric staining, the suggested use of this reagent is 5 µL per million cells in 100 µL staining volume or 5 µL per 100 µL of whole blood. It is recommended that the reagent be titrated for optimal performance for each application.  * PerCP/Cyanine5.5 has a maximum absorption of 482 nm and a maximum emission of 690 nm.
<b>Excitation Laser</b>	Blue Laser (488 nm)
<b>Application Notes</b>	Additional reported applications (for the relevant formats) include: immunohistochemical staining of acetone-fixed frozen tissue sections <sup>6</sup> and blocking of B cell proliferation. Clone H1B19 is not recommended for formalin-fixed paraffin-embedded sections. The Ultra-LEAF™ purified antibody (Endotoxin < 0.01 EU/µg, Azide-Free, 0.2 µm filtered) is recommended for functional assays (Cat. No. 302267 & 302268).  Clone H1B19 partially blocks anti-human CD19 clones 4G7 and SJ25C1 staining based on in-house testing
<b>Application References</b>	<ol style="list-style-type: none"> <li>Schlossman S, <i>et al.</i> 1995. Leucocyte Typing V. Oxford University Press. New York.</li> <li>Knapp W, <i>et al.</i> 1989. Leucocyte Typing IV. Oxford University Press. New York.</li> <li>Bradbury L, <i>et al.</i> 1993. <i>J. Immunol.</i> 151:2915.</li> <li>Joseph A, <i>et al.</i> 2010. <i>J. Virol.</i> 84:6645. <a href="#">PubMed</a></li> <li>Wang X, <i>et al.</i> 2010. <i>Haematologica.</i> 95:884. (FC) <a href="#">PubMed</a></li> <li>Walker JD, <i>et al.</i> 2009. <i>J. Immunol.</i> 182:1548. (Block) <a href="#">PubMed</a></li> <li>Yoshino N, <i>et al.</i> 2000. <i>Exp. Anim. (Tokyo)</i> 49:97. (FC)</li> <li>Hansen A, <i>et al.</i> 2002. <i>Arthritis Rheum.</i> 46:2160. (IHC)</li> <li>Stoeckius M, <i>et al.</i> 2017. <i>Nat. Methods.</i> 14:865. (PG)</li> <li>Peterson VM, <i>et al.</i> 2017. <i>Nat. Biotechnol.</i> 35:936. (PG)</li> </ol>
<b>Disclaimer</b>	<b>GMP RUO Flow Cytometry Antibodies.</b> BioLegend GMP RUO fluorophore conjugated antibodies

are manufactured in a dedicated GMP facility and compliant with ISO 13485:2016. For research use only. Not for use in diagnostic or therapeutic procedures. Our processes include:

- Batch-to-batch consistency
- Material traceability
- Documented procedures
- Documented employee training
- Equipment maintenance and monitoring records
- Lot-specific certificates of analysis
- Quality audits per ISO 13485:2016
- QA review of released products

## Antigen Details

---

<b>Structure</b>	Ig superfamily, type I transmembrane glycoprotein, 95 kD
<b>Distribution</b>	B lineage (except plasma cells), follicular dendritic cells
<b>Function</b>	B cell activation and differentiation
<b>Ligand/Receptor</b>	Forms complex with CD21 (CR2) and CD81 (TAPA-1), BCR coreceptor
<b>Cell Type</b>	B cells, Dendritic cells
<b>Biology Area</b>	Costimulatory Molecules, Immunology
<b>Molecular Family</b>	CD Molecules
<b>Antigen References</b>	1. Tedder T, <i>et al.</i> 1994. <i>Immunol. Today</i> 15:437. 2. Bradbury L, <i>et al.</i> 1993. <i>J. Immunol.</i> 151:2915.
<b>Gene ID</b>	<a href="#">930</a>

## Related Protocols

---

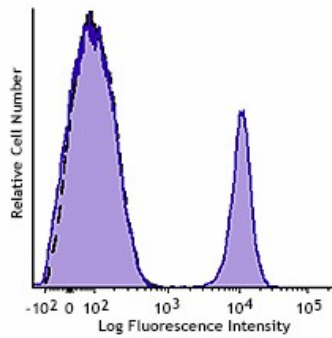
[Cell Surface Flow Cytometry Staining Protocol](#)

## Other Formats

---

APC anti-human CD19, Biotin anti-human CD19, FITC anti-human CD19, PE anti-human CD19, PE/Cyanine5 anti-human CD19, Purified anti-human CD19, APC/Cyanine7 anti-human CD19, PE/Cyanine7 anti-human CD19, Alexa Fluor® 488 anti-human CD19, Alexa Fluor® 647 anti-human CD19, Pacific Blue™ anti-human CD19, Alexa Fluor® 700 anti-human CD19, PerCP anti-human CD19, PerCP/Cyanine5.5 anti-human CD19, Brilliant Violet 421™ anti-human CD19, Brilliant Violet 570™ anti-human CD19, Brilliant Violet 650™ anti-human CD19, Brilliant Violet 785™ anti-human CD19, Brilliant Violet 510™ anti-human CD19, Brilliant Violet 605™ anti-human CD19, Brilliant Violet 711™ anti-human CD19, Purified anti-human CD19 (Maxpar® Ready), Alexa Fluor® 594 anti-human CD19, PE/Dazzle™ 594 anti-human CD19, APC/Fire™ 750 anti-human CD19, TotalSeq™-A0050 anti-human CD19, Brilliant Violet 750™ anti-human CD19, TotalSeq™-B0050 anti-human CD19, TotalSeq™-C0050 anti-human CD19, Spark NIR™ 685 anti-human CD19, Ultra-LEAF™ Purified anti-human CD19, APC/Fire™ 810 anti-human CD19, PE/Fire™ 640 anti-human CD19, PE/Fire™ 700 anti-human CD19, TotalSeq™-D0050 anti-human CD19, Spark YG™ 593 anti-human CD19, GMP Pacific Blue™ anti-human CD19, Spark Violet™ 423 anti-human CD19, GMP PE anti-human CD19, GMP APC anti-human CD19

Typical results from human peripheral blood lymphocytes stained either with HIB19 PerCP/Cyanine5.5 used at 5 µL/test (filled histogram) or with an isotype control (open histogram).



Symbols Glossary\*

Symbol	Meaning	Symbol Title	Symbol No.	Symbol	Meaning	Symbol Title	Symbol No.
	Catalog number	Catalogue number	5.1.6		Indicates the need for the user to consult the instructions for use.	Consult instructions for use	5.4.3
	Indicates the temperature limits to which the medical device can be safely exposed.	Temperature limit	5.3.7		Indicates a medical device that needs protection from light sources.	Keep away from sunlight	5.3.2
	Indicates the upper limit of temperature to which the medical device can be safely exposed.	Upper limit of temperature	5.3.6		Indicates the date after which the medical device is not to be used.	Use-by date	5.1.4
	Indicates the medical device manufacturer.	Manufacturer	5.1.1		Indicates the authorized representative in the European Community.	Authorized representative in the European Community	5.1.2
	Indicates the manufacturer's batch code so that the batch or lot can be identified.	Batch code	5.1.5		Indicates a medical device that is intended to be used as an in vitro diagnostic medical device.	<i>In vitro</i> diagnostic medical device	5.5.1

\* Symbol information is from EN ISO 15223-1:2016 Medical devices – Symbols to be used with medical device labels, labelling and information to be supplied – Part 1: General requirements

For research use only. Not for resale. BioLegend will not be held responsible for patent infringement or other violations that may occur with the use of our products.

\*These products may be covered by one or more Limited Use Label Licenses (see the BioLegend Catalog or our website, [www.biolegend.com/ordering#license](http://www.biolegend.com/ordering#license)). BioLegend products may not be transferred to third parties, resold, modified for resale, or used to manufacture commercial products, reverse engineer functionally similar materials, or to provide a service to third parties without written approval of BioLegend. By use of these products you accept the terms and conditions of all applicable Limited Use Label Licenses.

BioLegend Inc., 8999 BioLegend Way, San Diego, CA 92121 [www.biolegend.com](http://www.biolegend.com)  
 Toll-Free Phone: 1-877-Bio-Legend (246-5343) Phone: (858) 768-5800 Fax: (877) 455-9587