

## GMP PerCP anti-human CD8 Antibody

<b>Catalog# / Size</b>	260176 / 100 tests
<b>Clone</b>	SK1
<b>Other Names</b>	T8, Leu2
<b>Isotype</b>	Mouse IgG1, $\kappa$
<b>Description</b>	CD8a is a 32-34 kD type I glycoprotein. It forms a homodimer (CD8a/a) or heterodimer (CD8a/b) with CD8b. CD8, also known as T8 and Leu2, is a member of the immunoglobulin superfamily found on the majority of thymocytes, a subset of peripheral blood T cells, and NK cells (which express almost exclusively CD8a homodimers). CD8 acts as a co-receptor with MHC class I-restricted T cell receptors in antigen recognition and T cell activation and has been shown to play a role in thymic differentiation. Two domains in CD8a are important for function: the extracellular IgSF domain binds the $\alpha_3$ domain of MHC class I and the cytoplasmic CXCP motif binds the tyrosine kinase p56 Lck.

### Product Details

<b>Reactivity</b>	Human
<b>Antibody Type</b>	Monoclonal
<b>Host Species</b>	Mouse
<b>Formulation</b>	Phosphate-buffered solution, pH 7.2, containing 0.09% sodium azide and 0.2% (w/v) BSA (origin USA).
<b>Preparation</b>	The antibody was purified by affinity chromatography and conjugated with PerCP under optimal conditions.
<b>Concentration</b>	200 $\mu$ g/mL
<b>Storage &amp; Handling</b>	The antibody solution should be stored undiluted between 2°C and 8°C, and protected from prolonged exposure to light. <b>Do not freeze.</b>
<b>Application</b>	<a href="#">FC - Quality tested</a>
<b>Recommended Usage</b>	Each lot of this antibody is quality control tested by <a href="#">immunofluorescent staining with flow cytometric analysis</a> . For flow cytometric staining, the suggested use of this reagent is 5 $\mu$ L per million cells in 100 $\mu$ L staining volume or 5 $\mu$ L per 100 $\mu$ L of whole blood. It is recommended that the reagent be titrated for optimal performance for each application.  * PerCP has a maximum absorption of 482 nm and a maximum emission of 675 nm.
<b>Excitation Laser</b>	Blue Laser (488 nm)
<b>Application Notes</b>	Clone SK1 recognizes the a chain of CD8. Additional reported applications (for the relevant formats) include: proteogenomics <sup>8</sup> , immunohistochemistry of acetone-fixed frozen tissue sections, and spatial biology (IBEX) <sup>9,10</sup> . This clone was tested in-house and does not demonstrate utility for formalin-fixed paraffin-embedded (FFPE) human tonsil sections.
<b>Application References</b>	<ol style="list-style-type: none"> <li>1. Ledbetter JA, <i>et al.</i> 1981. <i>J. Exp. Med.</i> 153:310.</li> <li>2. Campanelli R, <i>et al.</i> 2002. <i>Intl. Immunol.</i> 14:39.</li> <li>3. Evans RL, <i>et al.</i> 1981. <i>Immunol.</i> 78:544.</li> <li>4. Wooldridge L, <i>et al.</i> 2005. <i>J. Bio. Chem.</i> 280:27491.</li> <li>5. Ch'el IL, <i>et al.</i> 2011. <i>J Exp Med.</i> 208:633. <a href="#">PubMed</a></li> <li>6. Carbone A, <i>et al.</i> 1999. <i>Blood</i> 93:2319. (IHC-F)</li> <li>7. Ahmed A, <i>et al.</i> 2001. <i>J. Pathol.</i> 193:383. (IHC)</li> <li>8. Peterson VM, <i>et al.</i> 2017. <i>Nat. Biotechnol.</i> 35:936. (PG)</li> <li>9. Radtke AJ, <i>et al.</i> 2020. <i>Proc Natl Acad Sci USA.</i> 117:33455-33465. (SB) <a href="#">PubMed</a></li> <li>10. Radtke AJ, <i>et al.</i> 2022. <i>Nat Protoc.</i> 17:378-401. (SB) <a href="#">PubMed</a></li> </ol>
<b>(PubMed link indicates BioLegend citation)</b>	

### Disclaimer

**GMP RUO Flow Cytometry Antibodies.** BioLegend GMP RUO fluorophore conjugated antibodies are manufactured in a dedicated GMP facility and compliant with ISO 13485:2016. For research

use only. Not for use in diagnostic or therapeutic procedures. Our processes include:

- Batch-to-batch consistency
- Material traceability
- Documented procedures
- Documented employee training
- Equipment maintenance and monitoring records
- Lot-specific certificates of analysis
- Quality audits per ISO 13485:2016
- QA review of released products

## Antigen Details

---

<b>Structure</b>	Ig superfamily, homodimer or heterodimer with CD8b, 32-34 kD
<b>Distribution</b>	Majority of thymocytes, T cell subset, NK cells
<b>Function</b>	MHC class I co-receptor, thymic differentiation, T cell activation
<b>Ligand/Receptor</b>	MHC Class I molecules
<b>Cell Type</b>	NK cells, T cells, Thymocytes
<b>Biology Area</b>	Immunology
<b>Molecular Family</b>	CD Molecules
<b>Antigen References</b>	1. Barclay N, <i>et al.</i> 1993. <i>The Leucocyte Antigen FactsBook</i> . Academic Press Inc. San Diego.
<b>Gene ID</b>	<a href="#">925</a>

## Related Protocols

---

[Cell Surface Flow Cytometry Staining Protocol](#)

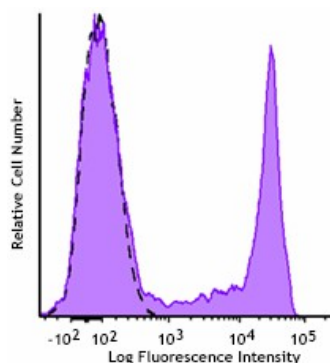
## Other Formats

---

Alexa Fluor® 647 anti-human CD8, Brilliant Violet 650™ anti-human CD8, Purified anti-human CD8, FITC anti-human CD8, PE anti-human CD8, PerCP anti-human CD8, PerCP/Cyanine5.5 anti-human CD8, PE/Cyanine7 anti-human CD8, APC/Cyanine7 anti-human CD8, Alexa Fluor® 488 anti-human CD8, Pacific Blue™ anti-human CD8, Biotin anti-human CD8, APC anti-human CD8, Alexa Fluor® 700 anti-human CD8, Purified anti-human CD8 (Maxpar® Ready), Brilliant Violet 510™ anti-human CD8, Brilliant Violet 711™ anti-human CD8, Brilliant Violet 785™ anti-human CD8, Brilliant Violet 605™ anti-human CD8, PE/Dazzle™ 594 anti-human CD8, APC/Fire™ 750 anti-human CD8, Brilliant Violet 421™ anti-human CD8, TotalSeq™-A0046 anti-human CD8, TotalSeq™-C0046 anti-human CD8, Brilliant Violet 750™ anti-human CD8, TotalSeq™-B0046 anti-human CD8, Spark Blue™ 550 anti-human CD8, APC/Fire™ 810 anti-human CD8, PE/Fire™ 640 anti-human CD8, PE/Fire™ 700 anti-human CD8, TotalSeq™-D0046 anti-human CD8, GMP APC anti-human CD8, PE/Cyanine5 anti-human CD8 Antibody, Spark UV™ 387 anti-human CD8, GMP PE anti-human CD8, GMP PE/Cyanine7 anti-human CD8, Spark NIR™ 685 anti-human CD8, KIRAVIA Blue 520™ anti-human CD8, GMP FITC anti-human CD8, GMP Pacific Blue™ anti-human CD8

## Product Data

---



Typical results from human peripheral blood lymphocytes stained either with SK1 PerCP used at 5 µL/test (filled histogram) or with an isotype control (open histogram).

For research use only. Not for resale. BioLegend will not be held responsible for patent infringement or other violations that may occur with the use of our products.

\*These products may be covered by one or more Limited Use Label Licenses (see the BioLegend Catalog or our website, [www.biolegend.com/ordering#license](http://www.biolegend.com/ordering#license)). BioLegend products may not be transferred to third parties, resold, modified for resale, or used to manufacture commercial products, reverse engineer functionally similar materials, or to provide a service to third parties without written approval of BioLegend. By use of these products you accept the terms and conditions of all applicable Limited Use Label Licenses.

BioLegend Inc., 8999 BioLegend Way, San Diego, CA 92121 [www.biolegend.com](http://www.biolegend.com)  
Toll-Free Phone: 1-877-Bio-Legend (246-5343) Phone: (858) 768-5800 Fax: (877) 455-9587