

## GMP PE/Cyanine7 anti-human CD13 Antibody

<b>Catalog# / Size</b>	260276 / 100 tests
<b>Clone</b>	WM15
<b>Workshop</b>	IV M44
<b>Other Names</b>	Aminopeptidase N, APN, gp150
<b>Isotype</b>	Mouse IgG1, κ
<b>Description</b>	CD13 is a 150-170 kD type II transmembrane glycoprotein also known as aminopeptidase N, APN, and gp150. This zinc metalloproteinase is expressed as a homodimer on granulocytes, myeloid progenitors, endothelial cells, epithelial cells and subset of granular lymphoid cells. It is not expressed on platelets or erythrocytes. CD13 is thought to be involved in the metabolism of many regulatory peptides and functions in antigen processing and the cleavage of chemokines such as MIP-1. CD13 serves as the cellular receptor for Coronavirus.

### Product Details

<b>Reactivity</b>	Human
<b>Antibody Type</b>	Monoclonal
<b>Host Species</b>	Mouse
<b>Formulation</b>	Phosphate-buffered solution, pH 7.2, containing True-Stain Monocyte Blocker™, 0.09% sodium azide and 0.2% (w/v) BSA (origin USA) and a stabilizer.
<b>Preparation</b>	The antibody was purified by affinity chromatography and conjugated with PE/Cyanine7 under optimal conditions.
<b>Concentration</b>	200 µg/mL
<b>Storage &amp; Handling</b>	The antibody solution should be stored undiluted between 2°C and 8°C, and protected from prolonged exposure to light. <b>Do not freeze.</b>
<b>Application</b>	<a href="#">FC - Quality tested</a>
<b>Recommended Usage</b>	Each lot of this antibody is quality control tested by <a href="#">immunofluorescent staining with flow cytometric analysis</a> . For flow cytometric staining, the suggested use of this reagent is 5 µL per million cells in 100 µL staining volume or 5 µL per 100 µL of whole blood. It is recommended that the reagent be titrated for optimal performance for each application.
<b>Excitation Laser</b>	Blue Laser (488 nm) Green Laser (532 nm)/Yellow-Green Laser (561 nm)
<b>Application Notes</b>	Additional reported applications (for the relevant formats) include: inhibition of tumor-cell invasion and blocking of aminopeptidase activities <sup>2,3</sup> , and immunohistochemical staining of acetone-fixed frozen tissue sections <sup>5</sup> . WM15 does not recognize formalin-fixed or paraffin-embedded tissue sections <sup>5</sup> . The LEAF™ purified antibody (Endotoxin < 0.1 EU/µg, Azide-Free, 0.2 µm filtered) is recommended for functional assays (Cat. No. 301708). For highly sensitive assays, we recommend Ultra-LEAF™ purified antibody (Cat. No. 301723 and 301724) with a lower endotoxin limit than standard LEAF™ purified antibodies (Endotoxin < 0.01 EU/µg).
<b>Application References</b>	<ol style="list-style-type: none"> <li>Knapp W, <i>et al.</i> 1989. Leucocyte Typing IV. Oxford University Press. New York.</li> <li>Saiki I, <i>et al.</i> 1993. <i>Int J Cancer</i>. 54:137. (Block)</li> <li>Rosenzweig M, <i>et al.</i> 2000. <i>Blood</i> 95:453. (Block)</li> <li>Kawase M, <i>et al.</i> 2008. <i>J Virol</i>. 83:712. (Block) <a href="#">PubMed</a></li> <li>Di Matteo P, <i>et al.</i> 2011. <i>J. Histochem. Cytochem.</i> 59:47. (IHC)</li> </ol>
<b>(PubMed link indicates BioLegend citation)</b>	
<b>Disclaimer</b>	<p><b>GMP RUO Flow Cytometry Antibodies.</b> BioLegend GMP RUO fluorophore conjugated antibodies are manufactured in a dedicated GMP facility and compliant with ISO 13485:2016. For research use only. Not for use in diagnostic or therapeutic procedures. Our processes include:</p> <ul style="list-style-type: none"> <li>• Batch-to-batch consistency</li> </ul>

- Material traceability
- Documented procedures
- Documented employee training
- Equipment maintenance and monitoring records
- Lot-specific certificates of analysis
- Quality audits per ISO 13485:2016
- QA review of released products

## Antigen Details

<b>Structure</b>	Zinc metallopeptidase, type II integral membrane glycoprotein, 150-170 kD
<b>Distribution</b>	Granulocytes, monocytes, myeloid progenitors, endothelial and epithelial cells, granular lymphocyte subset
<b>Function</b>	Zinc-binding metalloproteinase, antigen processing, cleaves MIP-1 chemokine
<b>Ligand/Receptor</b>	Coronavirus receptor
<b>Cell Type</b>	Endothelial cells, Epithelial cells, Granulocytes, Hematopoietic stem and progenitors, Lymphocytes, Mesenchymal Stem Cells, Monocytes, Neutrophils
<b>Biology Area</b>	Immunology, Stem Cells
<b>Molecular Family</b>	CD Molecules
<b>Antigen References</b>	1. Shipp M, <i>et al.</i> 1993. <i>Blood</i> 82:1052. 2. Larsen S, <i>et al.</i> 1996. <i>J. Exp. Med.</i> 184:183.
<b>Gene ID</b>	<a href="#">290</a>

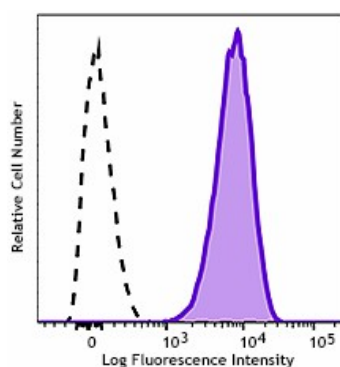
## Related Protocols

[Cell Surface Flow Cytometry Staining Protocol](#)

## Other Formats

APC anti-human CD13, PE anti-human CD13, Purified anti-human CD13, Brilliant Violet 421™ anti-human CD13, APC/Cyanine7 anti-human CD13, PE/Cyanine7 anti-human CD13, PerCP/Cyanine5.5 anti-human CD13, Purified anti-human CD13 (Maxpar® Ready), PE/Dazzle™ 594 anti-human CD13, Brilliant Violet 711™ anti-human CD13, Ultra-LEAF™ Purified anti-human CD13, Brilliant Violet 785™ anti-human CD13, Brilliant Violet 605™ anti-human CD13, TotalSeq™-A0364 anti-human CD13, TotalSeq™-B0364 anti-human CD13, TotalSeq™-C0364 anti-human CD13, TotalSeq™-D0364 anti-human CD13, GMP APC anti-human CD13, GMP PE anti-human CD13, PE/Fire™ 810 anti-human CD13

## Product Data



Typical results from human peripheral blood granulocytes stained either with WM15 PE/Cyanine7 used at 5 µL/test (filled histogram) or with an isotype control (open histogram).

\*These products may be covered by one or more Limited Use Label Licenses (see the BioLegend Catalog or our website, [www.biolegend.com/ordering#license](http://www.biolegend.com/ordering#license)). BioLegend products may not be transferred to third parties, resold, modified for resale, or used to manufacture commercial products, reverse engineer functionally similar materials, or to provide a service to third parties without written approval of BioLegend. By use of these products you accept the terms and conditions of all applicable Limited Use Label Licenses.

8999 BioLegend Way, San Diego, CA 92121 [www.biolegend.com](http://www.biolegend.com)  
Toll-Free Phone: 1-877-Bio-Legend (246-5343) Phone: (858) 768-5800 Fax: (877) 455-9587