

GMP Pacific Blue™ anti-human CD11c Antibody

Catalog# / Size	260288 / 100 tests
Clone	Bu15
Workshop	V S143
Other Names	Integrin α subunit, ITGAX, CR4, p150
Isotype	Mouse IgG1, κ
Description	CD11c is a 145-150 kD type I transmembrane glycoprotein also known as integrin α _x and CR4. CD11c non-covalently associates with integrin β ₂ (CD18) and is expressed on monocytes/macrophages, dendritic cells, granulocytes, NK cells, and subsets of T and B cells. CD11c has been reported to play a role in adhesion and CTL killing through its interactions with fibrinogen, CD54, and iC3b.

Product Details

Reactivity	Human
Antibody Type	Monoclonal
Host Species	Mouse
Formulation	Phosphate-buffered solution, pH 7.2, containing 0.09% sodium azide and 0.2% (w/v) BSA (origin USA) and a stabilizer
Preparation	The antibody was purified by affinity chromatography and conjugated with Pacific Blue™ under optimal conditions.
Concentration	400.0 μ g/mL
Storage & Handling	The antibody solution should be stored undiluted between 2°C and 8°C, and protected from prolonged exposure to light. Do not freeze.
Application	FC - Quality tested
Recommended Usage	<p>Each lot of this antibody is quality control tested by immunofluorescent staining with flow cytometric analysis. For flow cytometric staining, the suggested use of this reagent is 5 μL per million cells in 100 μL staining volume or 5 μL per 100 μL of whole blood. It is recommended that the reagent be titrated for optimal performance for each application.</p> <p>* Pacific Blue™ has a maximum emission of 455 nm when it is excited at 405 nm. Prior to using Pacific Blue™ conjugate for flow cytometric analysis, please verify your flow cytometer's capability of exciting and detecting the fluorochrome.</p> <p>Alexa Fluor® and Pacific Blue™ are trademarks of Life Technologies Corporation.</p> <p>View full statement regarding label licenses</p>
Excitation Laser	Violet Laser (405 nm)
Application Notes	Clone Bu15 has a different binding epitope than clone 3.9. The binding of Bu15 with CD11c is divalent cation independent. Additional reported applications (for the relevant formats of this clone) include: inhibition of CD11c mediated adhesion and stimulation of chemokine production by monocytes.
Application References	<ol style="list-style-type: none"> Sadhu C, <i>et al.</i> 2008. <i>J. Immunoass. Immunoch.</i> 29:42. Rezzonico R, <i>et al.</i> 2001. <i>Blood</i> 97:2932. Sadhu C, <i>et al.</i> 2007. <i>J. Leukoc. Biol.</i> 81:1395. Yoshino N, <i>et al.</i> 2000. <i>Exp. Anim. (Tokyo)</i> 49:97. (FC)
(PubMed link indicates BioLegend citation)	
Disclaimer	GMP RUO Flow Cytometry Antibodies. BioLegend GMP RUO fluorophore conjugated antibodies are manufactured in a dedicated GMP facility and compliant with ISO 13485:2016. For research use only. Not for use in diagnostic or therapeutic procedures. Our processes include:

- Batch-to-batch consistency
- Material traceability
- Documented procedures
- Documented employee training
- Equipment maintenance and monitoring records
- Lot-specific certificates of analysis
- Quality audits per ISO 13485:2016
- QA review of released products

Antigen Details

Structure	Integrin, type I transmembrane glycoprotein, associates with integrin β_2 (CD18), 145-150 kD
Distribution	Myeloid, dendritic cells, NK cells, B cells and T cell subsets
Function	Adhesion, CTL killing Ligand Receptor: CD54, fibrinogen, iC3b, ICAM-1, ICAM-4 Antigen
Cell Type	B cells, Dendritic cells, Neutrophils, NK cells, T cells
Biology Area	Cell Biology, Costimulatory Molecules, Immunology, Neuroscience, Neuroscience Cell Markers
Molecular Family	Adhesion Molecules, CD Molecules
Antigen References	<ol style="list-style-type: none"> 1. Petty H. 1996. <i>Immunol. Today</i> 17:209. 2. Springer T. 1994. <i>Cell</i> 76:301. 3. Ihanus E, <i>et al.</i> 2007. <i>Blood</i> 109:802-810.
Gene ID	3687

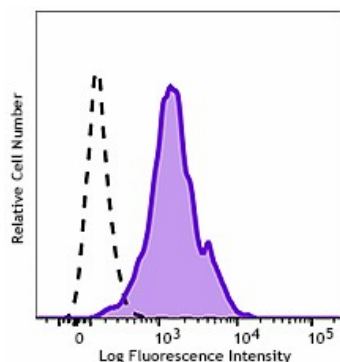
Related Protocols

[Cell Surface Flow Cytometry Staining Protocol](#)

Other Formats

APC/Cyanine7 anti-human CD11c, Purified anti-human CD11c, PE anti-human CD11c, APC anti-human CD11c, PerCP/Cyanine5.5 anti-human CD11c, Pacific Blue™ anti-human CD11c, FITC anti-human CD11c, PE/Cyanine7 anti-human CD11c, Alexa Fluor® 700 anti-human CD11c, Purified anti-human CD11c (Maxpar® Ready), Brilliant Violet 421™ anti-human CD11c, PE/Dazzle™ 594 anti-human CD11c, Biotin anti-human CD11c, Alexa Fluor® 647 anti-human CD11c, PerCP anti-human CD11c, Alexa Fluor® 488 anti-human CD11c, Brilliant Violet 650™ anti-human CD11c, APC/Fire™ 750 anti-human CD11c, GMP PE anti-human CD11c, GMP APC anti-human CD11c

Product Data



Typical results from human peripheral blood monocytes stained either with Bu15 Pacific Blue™ used at 5 μ L/test (filled histogram) or with an isotype control (open histogram).

For research use only. Not for resale. BioLegend will not be held responsible for patent infringement or other violations that may occur with the use of our products.

*These products may be covered by one or more Limited Use Label Licenses (see the BioLegend Catalog or our website, www.biolegend.com/ordering#license).

BioLegend products may not be transferred to third parties, resold, modified for resale, or used to manufacture commercial products, reverse engineer functionally similar materials, or to provide a service to third parties without written approval of BioLegend. By use of these products you accept the terms and conditions of all applicable Limited Use Label Licenses.

8999 BioLegend Way, San Diego, CA 92121 www.biolegend.com
Toll-Free Phone: 1-877-Bio-Legend (246-5343) Phone: (858) 768-5800 Fax: (877) 455-9587