

## GMP PE/Dazzle™ 594 anti-human CD14 Antibody

<b>Catalog# / Size</b>	260318 / 100 tests
<b>Clone</b>	M5E2
<b>Workshop</b>	III 329
<b>Other Names</b>	LPS receptor
<b>Isotype</b>	Mouse IgG2a, κ
<b>Description</b>	CD14 is a 53-55 kD glycosylphosphatidylinositol (GPI)-linked membrane glycoprotein also known as LPS receptor. CD14 is expressed at high levels on monocytes and macrophages, and at lower levels on granulocytes. Some dendritic cell populations such as interfollicular dendritic cells, reticular dendritic cells, and Langerhans cells have also been reported to express CD14. As a high-affinity receptor for LPS, CD14 is involved in the clearance of gram-negative pathogens, and in the upregulation of adhesion molecules and expression of cytokines in monocytes and neutrophils.

### Product Details

<b>Reactivity</b>	Human, Cynomolgus, Rhesus
<b>Reported Reactivity</b>	African Green, Capuchin Monkey, Cow, Chimpanzee, Common Marmoset, Cotton-topped Tamarin, Dog, Pigtailed Macaque, Squirrel Monkey
<b>Antibody Type</b>	Monoclonal
<b>Host Species</b>	Mouse
<b>Immunogen</b>	Full-length human CD14 protein
<b>Formulation</b>	Phosphate-buffered solution, pH 7.2, containing True-Stain Monocyte Blocker™, 0.09% sodium azide and 0.2% (w/v) BSA (origin USA) and a stabilizer.
<b>Preparation</b>	The antibody was purified by affinity chromatography and conjugated with PE/Dazzle™ 594 under optimal conditions.
<b>Concentration</b>	200.0 µg/mL
<b>Storage &amp; Handling</b>	The antibody solution should be stored undiluted between 2°C and 8°C, and protected from prolonged exposure to light. <b>Do not freeze.</b>
<b>Application</b>	<a href="#">FC - Quality tested</a>
<b>Recommended Usage</b>	Each lot of this antibody is quality control tested by <a href="#">immunofluorescent staining with flow cytometric analysis</a> . For flow cytometric staining, the suggested use of this reagent is 5 µL per million cells in 100 µL staining volume or 5 µL per 100 µL of whole blood. It is recommended that the reagent be titrated for optimal performance for each application.  * PE/Dazzle™ 594 has a maximum excitation of 566 nm and a maximum emission of 610 nm.
<b>Excitation Laser</b>	Blue Laser (488 nm) Green Laser (532 nm)/Yellow-Green Laser (561 nm)
<b>Application Notes</b>	The M5E2 antibody inhibits monocyte activation and cytokine production induced by LPS. Additional reported applications (for the relevant formats) include: immunohistochemical staining of acetone-fixed frozen sections, blocking of LPS stimulation <sup>4</sup> , and immunofluorescence microscopy <sup>5</sup> . Clone M5E2 is not recommended for immunohistochemical staining of formalin-fixed paraffin-embedded sections. The Ultra-LEAF™ purified antibody (Endotoxin < 0.01 EU/µg, Azide-Free, 0.2 µm filtered) is recommended for functional assays (Cat. No. 301861 and 301862).
<b>Application References</b>	1. McMichael A, <i>et al.</i> 1987. Leucocyte Typing III. Oxford University Press. New York. 2. Knapp W, <i>et al.</i> Eds. 1989. Leucocyte Typing IV. Oxford University Press. New York. (IHC-F) 3. Schlossman S, <i>et al.</i> Eds. 1995. Leucocyte Typing V. Oxford University Press. New York. 4. Power CP, <i>et al.</i> 2004. <i>J. Immunol.</i> 173:5229. (Block)
<b>(PubMed link indicates BioLegend citation)</b>	

5. Williams KC, *et al.* 2001. *J. Exp. Med.* 193:905.
6. Iwamoto S, *et al.* 2007. *J. Immunol.* 179:1449. (FC) [PubMed](#)
7. Santer DM, *et al.* 2010. *J. Immunol.* 485:4739. [PubMed](#)
8. Yoshino N, *et al.* 2000. *Exp. Anim. (Tokyo)* 49:97. (FC)
9. Zizzo G, *et al.* 2012. *J. Immunol.* 189:3508. [PubMed](#)
10. Stoeckius M, *et al.* 2017. *Nat. Methods.* 14:865. (PG)
11. Peterson VM, *et al.* 2017. *Nat. Biotechnol.* 35:936. (PG)

#### Disclaimer

**GMP RUO Flow Cytometry Antibodies.** BioLegend GMP RUO fluorophore conjugated antibodies are manufactured in a dedicated GMP facility and compliant with ISO 13485:2016. For research use only. Not for use in diagnostic or therapeutic procedures. Our processes include:

- Batch-to-batch consistency
- Material traceability
- Documented procedures
- Documented employee training
- Equipment maintenance and monitoring records
- Lot-specific certificates of analysis
- Quality audits per ISO 13485:2016
- QA review of released products

## Antigen Details

---

<b>Structure</b>	GPI-linked membrane glycoprotein, 53-55 kD
<b>Distribution</b>	Monocytes, macrophages, granulocytes (low)
<b>Function</b>	LPS receptor, clearance of Gram-negative pathogens
<b>Ligand/Receptor</b>	LPS
<b>Cell Type</b>	Granulocytes, Macrophages, Monocytes, Neutrophils
<b>Biology Area</b>	Cell Biology, Immunology, Innate Immunity, Neuroinflammation, Neuroscience
<b>Molecular Family</b>	CD Molecules
<b>Antigen References</b>	<ol style="list-style-type: none"> <li>1. Stocks S, <i>et al.</i> 1990. <i>Biochem. J.</i> 268:275.</li> <li>2. Wright S, <i>et al.</i> 1990. <i>Science</i> 249:1434.</li> </ol>
<b>Gene ID</b>	<a href="#">929</a>

## Related Protocols

---

[Cell Surface Flow Cytometry Staining Protocol](#)

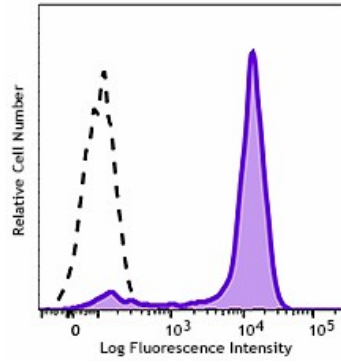
## Other Formats

---

APC anti-human CD14, FITC anti-human CD14, PE anti-human CD14, Purified anti-human CD14, PE/Cyanine7 anti-human CD14, Alexa Fluor® 488 anti-human CD14, Alexa Fluor® 647 anti-human CD14, Ultra-LEAF™ Purified anti-human CD14, Pacific Blue™ anti-human CD14, APC/Cyanine7 anti-human CD14, Alexa Fluor® 700 anti-human CD14, PerCP/Cyanine5.5 anti-human CD14, Biotin anti-human CD14, Brilliant Violet 421™ anti-human CD14, Brilliant Violet 570™ anti-human CD14, Brilliant Violet 605™ anti-human CD14, Brilliant Violet 650™ anti-human CD14, Brilliant Violet 711™ anti-human CD14, Brilliant Violet 785™ anti-human CD14, Brilliant Violet 510™ anti-human CD14, Purified anti-human CD14 (Maxpar® Ready), PerCP anti-human CD14, PE/Dazzle™ 594 anti-human CD14, APC/Fire™ 750 anti-human CD14, TotalSeq™-A0081 anti-human CD14, TotalSeq™-B0081 anti-human CD14, TotalSeq™-C0081 anti-human CD14, PE/Cyanine5 anti-human CD14, TotalSeq™-D0081 anti-human CD14, GMP FITC anti-human CD14, GMP APC anti-human CD14, GMP PE anti-human CD14, GMP Pacific Blue™ anti-human CD14

## Product Data

---



Typical results from human peripheral blood monocytes stained either with M5E2 PE/Dazzle™ 594 used at 5 µL/test (filled histogram) or with an isotype control (open histogram).

For research use only. Not for resale. BioLegend will not be held responsible for patent infringement or other violations that may occur with the use of our products.

\*These products may be covered by one or more Limited Use Label Licenses (see the BioLegend Catalog or our website, [www.biolegend.com/ordering#license](http://www.biolegend.com/ordering#license)). BioLegend products may not be transferred to third parties, resold, modified for resale, or used to manufacture commercial products, reverse engineer functionally similar materials, or to provide a service to third parties without written approval of BioLegend. By use of these products you accept the terms and conditions of all applicable Limited Use Label Licenses.

8999 BioLegend Way, San Diego, CA 92121 [www.biolegend.com](http://www.biolegend.com)  
Toll-Free Phone: 1-877-Bio-Legend (246-5343) Phone: (858) 768-5800 Fax: (877) 455-9587