

Keratin 5 Polyclonal Antibody, Purified

Catalog# / Size	905501 / 100 µL
Clone	Poly19055
Isotype	Rabbit Polyclonal
Description	This antibody is effective in immunohistochemistry (IHC).

Product Details

Product Information	<p>Intended Use: In Vitro Diagnostic (IVD). Use in immunohistochemistry (IHC) test methods only. The polyclonal antibody Poly19055 is used for the in vitro examination of frozen or paraffin-embedded human skin tissue sections using immunohistochemistry (IHC) methods for the qualitative identification of Keratin 5. The clinical interpretation of any staining or its absence should be complemented by morphological studies and proper controls and should be evaluated within the context of the patient's clinical history and other diagnostic tests by a qualified pathologist.</p>
Reactivity	Human
Immunogen	This polyclonal antibody was raised against a peptide sequence derived from the C-terminus of the mouse keratin 5 protein.
Formulation	Phosphate-buffered solution + 0.03% Thimerosal.
Preparation	The antibody was purified by peptide affinity chromatography.
Concentration	1.0 mg/mL
Storage & Handling	When stored at ≤ -20°C, product is stable until the date shown on the label. Avoid repeated freeze-thaw cycles to prevent denaturing the antibody. If thawed and stored at 2-8°C, product is stable for 24 months from the date of thaw or until the expiry date on the label, whichever comes first.
Recommended Usage	<p>Each lot of this antibody is quality control tested by immunohistochemical staining of formalin-fixed paraffin-embedded sections of normal human skin. Frozen skin has been verified during product development.</p> <p>The optimal working dilution should be determined for each specific assay condition.</p> <ul style="list-style-type: none">• IHC: 1:2,000-4,000 with either biotin based detection systems such as USA Ultra Streptavidin Detection (Cat. No. 929501). <p><i>Tissue Sections:</i> Paraffin-embedded tissues, frozen tissues <i>Pretreatment:</i> For optimal staining, the sections should be pretreated with an antigen unmasking solution such as Citrate Buffer Retrieval solution (Cat. No. 928502). <i>Incubation:</i> 60 minutes at room temperature</p>
Application References	<ol style="list-style-type: none">1. Hübner A, et al. JNK and PTEN cooperatively control the development of invasive adenocarcinoma of the prostate. <i>PNAS</i>, 109: 12046-12051, Jul 2012. [IHC] PubMed2. Kierszenbaum AL, Rivkin E, Tres LL. Acroplaxome, an F-actin-keratin-containing plate, anchors the acrosome to the nucleus during shaping of the spermatid head. <i>Mol Biol Cell</i> 14(11):4628-40, 2003. [IHC] PubMed3. Hu Y, Baud V, Oga T, Kim KI, Yoshida K, Karin M. IKKalpha controls formation of the epidermis independently of NF-kappaB. <i>Nature</i> 410:710-714, 2001.4. Yuspa SH, Kilkenny AD, Steinert PM, Roop DR. Expression of murine epidermal differentiation markers is tightly regulated by restricted extracellular calcium concentrations in-vitro. <i>J Cell Biol</i> 109:1207-1217, 1989.5. Roop DR, Cheng CK, Titterton L, Meyers CA, Stanley JR, Steinert PM, Yuspa SH. Synthetic peptides corresponding to keratin subunits elicit highly specific antibodies. <i>J Biol Chem</i> 259:8037-8040, 1984.6. Liang Y, 2011 <i>Patholog Res Int</i>. 2011:936794. (IHC) PubMed7. Easter SL, et al. 2014. <i>PLoS One</i>. 9:113247. (IF, WB) PubMed8. Osmanagic-Myers S, et al. 2006. <i>J Cell Biol</i>. 174:557. (WB) PubMed9. Kittrell FS, et al. 2011. <i>Breast Cancer Res</i>.13:41. (IF) PubMed
(PubMed link indicates BioLegend citation)	

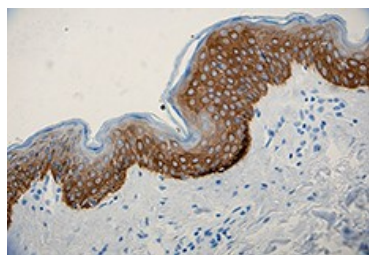
10. Croyle MJ, et al. Role of epidermal primary cilia in the homeostasis of skin and hair follicles. *Development*, 138: 1675-1685, May 2011. [IHC, IF] [PubMed](#)
11. Bayo P, Sanchis A, Bravo A, Cascallana JL, Buder K, Tuckermann J, Schütz G, and PTrez P. Glucocorticoid Receptor Is Required for Skin Barrier Competence. *Endocrinology*, 149: 1377-1388, Mar 2008. [IHC] [PubMed](#)

Disclaimer

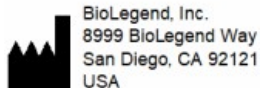
WARNINGS AND PRECAUTIONS

1. Use appropriate personal protective equipment and safety practices per universal precautions when working with this reagent. Refer to the reagent safety data sheet.
2. All specimens, samples and any material coming in contact with them should be considered potentially infectious and should be disposed of with proper precautions and in accordance with federal, state and local regulations.
3. Do not use this reagent beyond the expiration date stated on the label.
4. Do not use this reagent if it appears cloudy or if there is any change in the appearance of the reagent as these may be indication of possible deterioration.

Product Data



Anti-K5 antibody (clone Poly19055) showing strong cytoplasmic staining of the basal cells of normal human skin epidermis.



BioLegend, Inc.
8999 BioLegend Way
San Diego, CA 92121
USA



MedEnvoy Global B.V.
Prinses Margrietplantsoen 33 – Suite 123
2595 AM The Hague
The Netherlands

UK Responsible Person
MedEnvoy UK Limited
85, Great Portland Street, First Floor
London, W1W 7LT
United Kingdom

Symbol	Symbol Title	Description
	CE marking	A "CE" mark indicates that a product has been assessed before being placed on the market, and has been found to meet European Union safety, health, and/or environmental protection requirements.
	UKCA marking	A "UKCA" mark indicates that a product has been assessed before being placed in the UK market, and has been found to meet UK safety, health, and/or environmental protection requirements.

Symbols Glossary*

Symbol	Meaning	Symbol Title	Symbol No.	Symbol	Meaning	Symbol Title	Symbol No.
	Catalogue number	Catalogue number	5.1.6		Indicates the need for the user to consult the instructions for use.	Consult instructions for use	5.4.3
	Indicates the temperature limits to which the medical device can be safely exposed.	Temperature limit	5.3.7		Indicates a medical device that needs protection from light sources.	Keep away from sunlight	5.3.2
	Indicates the upper limit of temperature to which the medical device can be safely exposed.	Upper limit of temperature	5.3.6		Indicates the date after which the medical device is not to be used.	Use-by date	5.1.4
	Indicates the medical device manufacturer.	Manufacturer	5.1.1		Indicates the authorized representative in the European community.	Authorized representative in the European community.	5.1.2
	Indicates the manufacturer's batch code so that the batch or lot can be identified.	Batch code	5.1.5		Indicates a medical device that is intended to be used as an in vitro diagnostic medical device.	<i>In vitro</i> diagnostic medical device	5.5.1

* Symbol information is from EN ISO 15223-1:2016 Medical Devices-Symbols to be used with medical device labels, labelling and information to be supplied-Part 1: General requirements

Not for resale. BioLegend will not be held responsible for patent infringement or other violations that may occur with the use of our products.

*These products may be covered by one or more Limited Use Label Licenses (see the BioLegend Catalog or our website, www.biolegend.com/ordering#license). BioLegend products may not be transferred to third parties, resold, modified for resale, or used to manufacture commercial products, reverse engineer functionally

similar materials, or to provide a service to third parties without written approval of BioLegend. By use of these products you accept the terms and conditions of all applicable Limited Use Label Licenses.

8999 BioLegend Way, San Diego, CA 92121 www.biolegend.com
Toll-Free Phone: 1-877-Bio-Legend (246-5343) Phone: (858) 768-5800 Fax: (877) 455-9587