

Alexa Fluor® 647 anti-mouse CD192 (CCR2) Antibody

Catalog# / Size	150603 / 25 µg 150604 / 100 µg
Clone	SA203G11
Regulatory Status	RUO
Other Names	Ccr2, Ckr2, Ccr2a, Ccr2b
Isotype	Rat IgG2b, κ
Description	CD192, also known as CCR2, is a 42 kD G-protein coupled receptor that is associated with bone marrow homeostasis. Specifically, CD192 mediates monocyte chemotaxis and acts as a receptor for monocyte chemoattractant protein 1 (MCP-1). CD192 is primarily expressed on monocytes and macrophages, with some expression on basophils. It is involved in monocyte infiltration in inflammatory diseases such as rheumatoid arthritis and cancer.

Product Details

Verified Reactivity	Mouse
Antibody Type	Monoclonal
Host Species	Rat
Immunogen	Mouse CCR2 transfectants.
Formulation	Phosphate-buffered solution, pH 7.2, containing 0.09% sodium azide.
Preparation	The antibody was purified by affinity chromatography and conjugated with Alexa Fluor® 647 under optimal conditions.
Concentration	0.5 mg/ml
Storage & Handling	The antibody solution should be stored undiluted between 2°C and 8°C, and protected from prolonged exposure to light. Do not freeze.
Application	FC - Quality tested
Recommended Usage	Each lot of this antibody is quality control tested by immunofluorescent staining with flow cytometric analysis . For flow cytometric staining, the suggested use of this reagent is ≤1.0 µg per million cells in 100 µl volume. It is recommended that the reagent be titrated for optimal performance for each application. * Alexa Fluor® 647 has a maximum emission of 668 nm when it is excited at 633 nm / 635 nm. Alexa Fluor® and Pacific Blue™ are trademarks of Life Technologies Corporation. View full statement regarding label licenses
Excitation Laser	Red Laser (633 nm)

Product Citations

1. Mansouri N, *et al.* 2019. JCI Insight. 4:e128060. [PubMed](#)
2. Sun G *et al.* 2018. Cell reports. 25(13):3786-3799 . [PubMed](#)
3. Mariani SA, *et al.* 2019. Immunity. 50:1439. [PubMed](#)
4. Linde N, *et al.* 2018. Nat Commun. 9:21. [PubMed](#)
5. Oladiran O, *et al.* 2021. J Neuroinflammation. 77:18. [PubMed](#)
6. Pascual-García M, *et al.* 2019. Nat Commun. 10:2416. [PubMed](#)
7. Guo P, *et al.* 2021. J Immunol. 207:408. [PubMed](#)
8. Blagih J, *et al.* 2020. Cell Rep. 30:481. [PubMed](#)
9. Fan A, *et al.* 2020. J Neuroinflammation. 17:179. [PubMed](#)
10. Wu B, *et al.* 2020. Int J Biol Sci. 1.132638889. [PubMed](#)
11. Barbet G, *et al.* 2018. Immunity. 48:584. [PubMed](#)
12. Clemente-Casares X, *et al.* 2017. Immunity. 47:974. [PubMed](#)
13. Peruzzotti-Jametti L, *et al.* 2018. Cell Stem Cell. 22:355. [PubMed](#)

14. Chen KE, *et al.* 2021. *J Neuroinflammation*. 18:140. [PubMed](#)
15. Oladiran O, *et al.* 2021. *Front Immunol*. 12:720733. [PubMed](#)
16. Kubli SP, *et al.* 2019. *Nat Commun*. 10:2678. [PubMed](#)
17. van Ingen E, *et al.* 2021. *Mol Ther Nucleic Acids*. 26:1228. [PubMed](#)

RRID AB_2566139 (BioLegend Cat. No. 150603)
 AB_2566140 (BioLegend Cat. No. 150604)

Antigen Details

Structure	G-protein-coupled receptor, 7-transmembrane protein, 42 kD.
Distribution	Monocytes/macrophages and basophils.
Function	Mediator of monocyte chemotaxis and bone marrow homeostasis.
Ligand/Receptor	MCP-1, Ccl2, Ccl7, and Ccl13.
Cell Type	Basophils, Macrophages, Monocytes
Biology Area	Immunology
Molecular Family	CD Molecules, Cytokine/Chemokine Receptors, GPCR
Antigen References	<ol style="list-style-type: none"> 1. Mack M, <i>et al.</i> 2001. <i>J. Immunol</i>. 166:4697. 2. Dutta P, <i>et al.</i> 2015. <i>Cell Stem Cell</i>. 16:477. 3. Li L, <i>et al.</i> 2008. <i>Kidney Int</i>. 74:1526.
Gene ID	12772

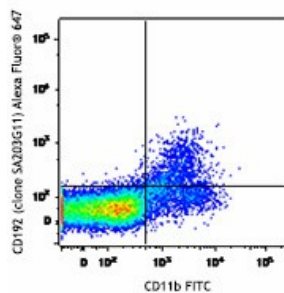
Related Protocols

[Cell Surface Flow Cytometry Staining Protocol](#)

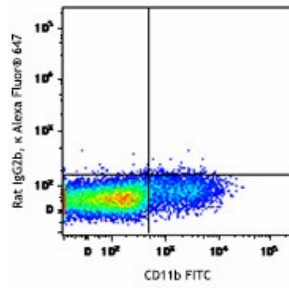
Other Formats

Alexa Fluor® 647 anti-mouse CD192 (CCR2), Brilliant Violet 421™ anti-mouse CD192 (CCR2), PE anti-mouse CD192 (CCR2), PE/Cyanine7 anti-mouse CD192 (CCR2), FITC anti-mouse CD192 (CCR2), Brilliant Violet 605™ anti-mouse CD192 (CCR2), Brilliant Violet 650™ anti-mouse CD192 (CCR2), Brilliant Violet 785™ anti-mouse CD192 (CCR2), Brilliant Violet 510™ anti-mouse CD192 (CCR2), Biotin anti-mouse CD192 (CCR2), TotalSeq™-A0426 anti-mouse CD192 (CCR2), APC anti-mouse CD192 (CCR2), APC/Fire™ 750 anti-mouse CD192 (CCR2), TotalSeq™-B0426 anti-mouse CD192 (CCR2), TotalSeq™-C0426 anti-mouse CD192 (CCR2), PE/Cyanine5 anti-mouse CD192 (CCR2), PE/Dazzle™ 594 anti-mouse CD192 (CCR2), PE/Fire™ 640 anti-mouse CD192 (CCR2)

Product Data



C57BL/6 bone marrow was stained with Ly-6G PE, CD11b FITC, and CD192 (clone SA203G11) Alexa Fluor® 647 (top image) or rat IgG2b, κ Alexa Fluor® 647 isotype control (bottom image). Dot plots are gated on Ly-6G⁻ cells.



For research use only. Not for diagnostic use. Not for resale. BioLegend will not be held responsible for patent infringement or other violations that may occur with the use of our products.

*These products may be covered by one or more Limited Use Label Licenses (see the BioLegend Catalog or our website, www.biolegend.com/ordering#license). BioLegend products may not be transferred to third parties, resold, modified for resale, or used to manufacture commercial products, reverse engineer functionally similar materials, or to provide a service to third parties without written approval of BioLegend. By use of these products you accept the terms and conditions of all applicable Limited Use Label Licenses. Unless otherwise indicated, these products are for research use only and are not intended for human or animal diagnostic, therapeutic or commercial use.

BioLegend Inc., 8999 BioLegend Way, San Diego, CA 92121 www.biolegend.com
Toll-Free Phone: 1-877-Bio-Legend (246-5343) Phone: (858) 768-5800 Fax: (877) 455-9587