

## APC anti-mouse CD103 Recombinant Antibody

<b>Catalog# / Size</b>	156913 / 25 µg
<b>Clone</b>	QA17A24
<b>Regulatory Status</b>	RUO
<b>Other Names</b>	Integrin αEL chain, Integrin αE chain, αE integrin, ITGAE
<b>Isotype</b>	Mouse IgG1, κ
<b>Description</b>	CD103 is a type I transmembrane glycoprotein known as αE integrin or Integrin αEL chain. It belongs to the integrin family and is primarily found on intestinal intraepithelial lymphocytes (IEL). CD103 is also expressed on a subpopulation of lamina propria T cells, epithelial dendritic cells, lamina propria-derived dendritic cells, and a small subset of peripheral lymphocytes. T regulatory cells express high level of CD103. The CD103 expression on lymphocytes can be induced upon activation and TGF-β stimulation. In association with integrin β7, CD103 is expressed as αE/β7 heterodimer. Mature CD103 protein can be cleaved into 2 chains, a 150 kD (C-terminal) chain and a 25 kD (N-terminal) chain, which remain linked by disulfide bonds. CD103 binds to E-cadherin and mediates homing of lymphocytes to the intestinal epithelium.

### Product Details

---

<b>Verified Reactivity</b>	Mouse
<b>Antibody Type</b>	Recombinant
<b>Host Species</b>	Mouse
<b>Immunogen</b>	Mouse intestinal intraepithelial lymphocytes
<b>Formulation</b>	Phosphate-buffered solution, pH 7.2, containing 0.09% sodium azide
<b>Preparation</b>	The antibody was purified by affinity chromatography and conjugated with APC under optimal conditions.
<b>Concentration</b>	0.2 mg/mL
<b>Storage &amp; Handling</b>	The antibody solution should be stored undiluted between 2°C and 8°C, and protected from prolonged exposure to light. <b>Do not freeze.</b>
<b>Application</b>	<a href="#">FC - Quality tested</a>
<b>Recommended Usage</b>	Each lot of this antibody is quality control tested by <a href="#">immunofluorescent staining with flow cytometric analysis</a> . For flow cytometric staining, the suggested use of this reagent is ≤ 0.5 µg per million cells in 100 µL volume. It is recommended that the reagent be titrated for optimal performance for each application.
<b>Excitation Laser</b>	Red Laser (633 nm)
<b>RRID</b>	AB_2894648 (BioLegend Cat. No. 156913)

### Antigen Details

---

<b>Structure</b>	Type I transmembrane glycoprotein, Integrin family, can be cleaved into 150 kD and 25 kD chains, associated with β7 integrin
<b>Function</b>	Retention and activation of CD103+ lymphocytes in the intestinal epithelium, regulate tissue-specific T cell homing.
<b>Interaction</b>	T cells, Dendritic cells, Lymphocytes, Tregs
<b>Ligand/Receptor</b>	E-Cadherin

**Cell Type** Dendritic cells, Lymphocytes, T cells, Tregs

**Biology Area** Immunology

**Molecular Family** Adhesion Molecules, CD Molecules

**Antigen References**

1. Kilshaw PJ and Murant SJ. 1990. *Eur. J. Immunol.* 20:2201.
2. Karecla PI, *et al.* 1995. *Eur. J. Immunol.* 25:852.
3. LeFrancois L, *et al.* 1994. *Eur. J. Immunol.* 24:635.
4. Sung SS, *et al.* 2006. *J. Immunol.* 176:2161.
5. Johansson-Lindbom B, *et al.* 2005. *J. Exp. Med.* 202:1063.
6. Dujardin HC, *et al.* 2004. *Proc. Natl. Acad. Sci. USA.* 101:14473.

**Gene ID** [16407](#)

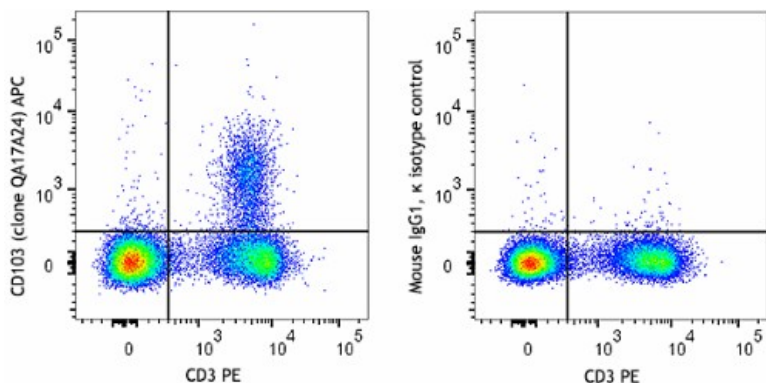
**Related Protocols**

[Cell Surface Flow Cytometry Staining Protocol](#)

**Other Formats**

Purified anti-mouse CD103 Recombinant Antibody, PE anti-mouse CD103 Recombinant Antibody, PE/Cyanine7 anti-mouse CD103 Recombinant Antibody, FITC anti-mouse CD103 Recombinant Antibody, PE/Dazzle™ 594 anti-mouse CD103 Recombinant Antibody, PerCP/Cyanine5.5 anti-mouse CD103 Recombinant Antibody, APC anti-mouse CD103 Recombinant Antibody, Brilliant Violet 421™ anti-mouse CD103 Recombinant Antibody, PE/Fire™ 640 anti-mouse CD103 Recombinant Antibody, PE/Fire™ 810 anti-mouse CD103 Recombinant Antibody

**Product Data**



C57BL/6 mouse splenocytes were stained with CD3 PE and anti-mouse CD103 Recombinant (clone QA17A24) APC (left) or mouse IgG1, κ APC isotype control (right).

For research use only. Not for diagnostic use. Not for resale. BioLegend will not be held responsible for patent infringement or other violations that may occur with the use of our products.

\*These products may be covered by one or more Limited Use Label Licenses (see the BioLegend Catalog or our website, [www.biolegend.com/ordering#license](http://www.biolegend.com/ordering#license)). BioLegend products may not be transferred to third parties, resold, modified for resale, or used to manufacture commercial products, reverse engineer functionally similar materials, or to provide a service to third parties without written approval of BioLegend. By use of these products you accept the terms and conditions of all applicable Limited Use Label Licenses. Unless otherwise indicated, these products are for research use only and are not intended for human or animal diagnostic, therapeutic or commercial use.

BioLegend Inc., 8999 BioLegend Way, San Diego, CA 92121 [www.biolegend.com](http://www.biolegend.com)  
Toll-Free Phone: 1-877-Bio-Legend (246-5343) Phone: (858) 768-5800 Fax: (877) 455-9587