

## Biotin anti-mouse CD103 Antibody

<b>Catalog# / Size</b>	121403 / 50 µg 121404 / 200 µg
<b>Clone</b>	2E7
<b>Regulatory Status</b>	RUO
<b>Other Names</b>	Integrin αE chain, Integrin αE chain, αE integrin, ITGAE
<b>Isotype</b>	Armenian Hamster IgG
<b>Description</b>	CD103 is a type I transmembrane glycoprotein known as αE integrin or Integrin αE chain. It belongs to the integrin family and is primarily found on intestinal intraepithelial lymphocytes (IEL). CD103 is also expressed on a subpopulation of lamina propria T cells, epithelial dendritic cells, lamina propria-derived dendritic cells, and a small subset of peripheral lymphocytes. T regulatory cells express high level of CD103. The CD103 expression on lymphocytes can be induced upon activation and TGF-β stimulation. In association with integrin β7, CD103 is expressed as αE/β7 heterodimer. Mature CD103 protein can be cleaved into 2 chains, a 150 kD (C-terminal) chain and a 25 kD (N-terminal) chain, which remain linked by disulfide bonds. CD103 binds to E-cadherin and mediates homing of lymphocytes to the intestinal epithelium.

### Product Details

<b>Verified Reactivity</b>	Mouse
<b>Antibody Type</b>	Monoclonal
<b>Host Species</b>	Armenian Hamster
<b>Immunogen</b>	Mouse intestinal intraepithelial lymphocytes
<b>Formulation</b>	Phosphate-buffered solution, pH 7.2, containing 0.09% sodium azide.
<b>Preparation</b>	The antibody was purified by affinity chromatography, and conjugated with biotin under optimal conditions.
<b>Concentration</b>	0.5 mg/ml
<b>Storage &amp; Handling</b>	The antibody solution should be stored undiluted between 2°C and 8°C. <b>Do not freeze.</b>
<b>Application</b>	<a href="#">FC - Quality tested</a>
<b>Recommended Usage</b>	Each lot of this antibody is quality control tested by <a href="#">immunofluorescent staining with flow cytometric analysis</a> . For flow cytometric staining, the suggested use of this reagent is ≤ 1.0 µg per million cells in 100 µl volume. It is recommended that the reagent be titrated for optimal performance for each application.
<b>Application Notes</b>	Additional reported applications (for the relevant formats) include: immunoprecipitation <sup>1</sup> , immunohistochemical staining <sup>1,7</sup> of acetone-fixed frozen sections, immunofluorescence <sup>2</sup> , and <i>in vitro</i> activation <sup>1</sup> .
<b>Application References</b>	<ol style="list-style-type: none"> <li>1. LeFrancois L, <i>et al.</i> 1994. <i>Eur. J. Immunol.</i> 24:635. (FC, IHC, IP)</li> <li>2. Mysorekar IU, <i>et al.</i> 2002. <i>J. Biol. Chem.</i> 277:37811. (FC, IF)</li> <li>3. Mikami N, <i>et al.</i> 2011. <i>J. Immunol.</i> 186:6886. <a href="#">PubMed</a></li> <li>4. del Rio ML, <i>et al.</i> 2011. <i>Transpl. Int.</i> 24:501. (FC) <a href="#">PubMed</a></li> <li>5. Quinn KM, <i>et al.</i> 2013. <i>J. Immunol.</i> 191:5085. <a href="#">PubMed</a></li> <li>6. Verhagen J and Wraith DC. 2014. <i>J. Immunol. Methods.</i> S0022. (FC) <a href="#">PubMed</a></li> <li>7. Xiao B, <i>et al.</i> 2015. <i>PLoS One</i> 1:e0115333. (IHC)</li> </ol>
<b>Product Citations</b>	<ol style="list-style-type: none"> <li>1. Sasaki K, <i>et al.</i> 2019. <i>Nat Commun.</i> 10:3878. <a href="#">PubMed</a></li> <li>2. Kitano M, <i>et al.</i> 2016. <i>Proc Natl Acad Sci U S A.</i> 113: 1044 - 1049. <a href="#">PubMed</a></li> <li>3. Murphy S, <i>et al.</i> 2014. <i>Am J Physiol Gastrointest Liver Physiol.</i> 307:871. <a href="#">PubMed</a></li> <li>4. Takano T, <i>et al.</i> 2020. <i>Front Immunol.</i> 11:1555. <a href="#">PubMed</a></li> <li>5. Yang BH, <i>et al.</i> 2020. <i>Cell Reports.</i> 27(12):3629-3645.e6.. <a href="#">PubMed</a></li> </ol>

**RRID** AB\_535946 (BioLegend Cat. No. 121403)  
AB\_535947 (BioLegend Cat. No. 121404)

## Antigen Details

<b>Structure</b>	Type I transmembrane glycoprotein, Integrin family, can be cleaved into 150 kD and 25 kD chains, associated with $\beta 7$ integrin
<b>Distribution</b>	Majority of intestinal intraepithelial lymphocytes (IEL), subpopulation of lamina propria T cells, epithelial dendritic cells, small subset of peripheral lymphocytes, Treg cells.
<b>Function</b>	Retention and activation of CD103 <sup>+</sup> lymphocytes in the intestinal epithelium, regulate tissue-specific T cell homing.
<b>Ligand/Receptor</b>	E-Cadherin
<b>Cell Type</b>	Dendritic cells, Lymphocytes, T cells, Tregs
<b>Biology Area</b>	Immunology
<b>Molecular Family</b>	Adhesion Molecules, CD Molecules
<b>Antigen References</b>	<ol style="list-style-type: none"><li>1. Kilshaw PJ and SJ. Murant. 1990. <i>Eur. J. Immunol.</i> 20:2201.</li><li>2. Karecla PI, et al. 1995. <i>Eur. J. Immunol.</i> 25:852.</li><li>3. LeFrancois L, et al. 1994. <i>Eur. J. Immunol.</i> 24:635.</li><li>4. Sung SS, et al. 2006. <i>J. Immunol.</i> 176:2161.</li><li>5. Johansson-Lindbom B, et al. 2005. <i>J. Exp. Med.</i> 202:1063.</li><li>6. Dujardin HC, et al. 2004. <i>Proc. Natl. Acad. Sci. USA.</i> 101:14473.</li></ol>
<b>Gene ID</b>	<a href="#">16407</a>

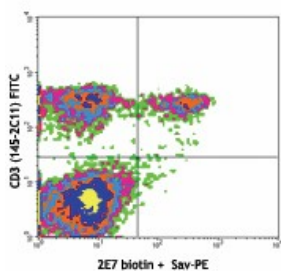
## Related Protocols

[Cell Surface Flow Cytometry Staining Protocol](#)

## Other Formats

Purified anti-mouse CD103, Biotin anti-mouse CD103, PE anti-mouse CD103, Alexa Fluor® 488 anti-mouse CD103, Alexa Fluor® 647 anti-mouse CD103, Alexa Fluor® 594 anti-mouse CD103, Brilliant Violet 510™ anti-mouse CD103, APC anti-mouse CD103, PerCP/Cyanine5.5 anti-mouse CD103, Pacific Blue™ anti-mouse CD103, FITC anti-mouse CD103, Brilliant Violet 421™ anti-mouse CD103, PE/Cyanine7 anti-mouse CD103, APC/Cyanine7 anti-mouse CD103, PE/Dazzle™ 594 anti-mouse CD103, Brilliant Violet 605™ anti-mouse CD103, Brilliant Violet 711™ anti-mouse CD103, TotalSeq™-A0201 anti-mouse CD103, Brilliant Violet 785™ anti-mouse CD103, Alexa Fluor® 700 anti-mouse CD103, TotalSeq™-C0201 anti-mouse CD103, TotalSeq™-B0201 anti-mouse CD103, PE/Cyanine5 anti-mouse CD103

## Product Data



C57BL/6 mouse splenocytes stained with CD3 (145-2C11) FITC and biotinylated 2E7, followed by Sav-PE

use of our products.

\*These products may be covered by one or more Limited Use Label Licenses (see the BioLegend Catalog or our website, [www.biolegend.com/ordering#license](http://www.biolegend.com/ordering#license)). BioLegend products may not be transferred to third parties, resold, modified for resale, or used to manufacture commercial products, reverse engineer functionally similar materials, or to provide a service to third parties without written approval of BioLegend. By use of these products you accept the terms and conditions of all applicable Limited Use Label Licenses. Unless otherwise indicated, these products are for research use only and are not intended for human or animal diagnostic, therapeutic or commercial use.

BioLegend Inc., 8999 BioLegend Way, San Diego, CA 92121 [www.biolegend.com](http://www.biolegend.com)  
Toll-Free Phone: 1-877-Bio-Legend (246-5343) Phone: (858) 768-5800 Fax: (877) 455-9587