

FITC anti-mouse/human CD44 Recombinant Antibody

Catalog# / Size	163605 / 25 µg 163606 / 100 µg
Clone	QA19A43
Regulatory Status	RUO
Other Names	Hermes, Pgp1, H-CAM, or HUTCH
Isotype	Rat IgG2a, κ
Description	CD44 is expressed on all leukocytes, endothelial cells, hepatocytes, and mesenchymal cells. It has been reported to be a valuable marker for memory cell subsets. High CD44 expression on Treg cells has been associated with potent suppressive function via high production of IL-10. CD44 is an adhesion molecule involved in leukocyte attachment to and rolling on endothelial cells, homing to peripheral lymphoid organs and to the sites of inflammation, and leukocyte aggregation.

Product Details

Verified Reactivity	Mouse, Human
Antibody Type	Recombinant
Host Species	Rat
Formulation	Phosphate-buffered solution, pH 7.2, containing 0.09% sodium azide
Preparation	The antibody was purified by affinity chromatography and conjugated with FITC under optimal conditions.
Concentration	0.5 mg/mL
Storage & Handling	The antibody solution should be stored undiluted between 2°C and 8°C, and protected from prolonged exposure to light. Do not freeze.
Application	FC - Quality tested
Recommended Usage	Each lot of this antibody is quality control tested by immunofluorescent staining with flow cytometric analysis . For flow cytometric staining, the suggested use of this reagent is ≤ 0.5 µg per million cells in 100 µL volume. It is recommended that the reagent be titrated for optimal performance for each application.
RRID	AB_2894435 (BioLegend Cat. No. 163605) AB_2894435 (BioLegend Cat. No. 163606)

Antigen Details

Structure	Variable splicing of CD44 gene generates many CD44 isoforms, 80-95 kD
Distribution	All leukocytes, epithelial cells, endothelial cells, hepatocytes, mesenchymal cells.
Function	Leukocyte attachment and rolling on endothelial cells, stromal cells and ECM.
Ligand/Receptor	Hyaluronan, MIP-1β, fibronectin, collagen.
Antigen References	

1. Barclay AN, *et al.* 1997. The Leukocyte Antigen FactsBook Academic Press.
2. Haynes BF, *et al.* 1991. *Cancer Cells*. 3:347.
3. Goldstein LA, *et al.* 1989. *Cell*. 56:1063.
4. Mikecz K, *et al.* 1995. *Nat Med*. 1:558.
5. Hegde V, *et al.* 2008. *J Leukocyte Biol*. 84:134.
6. Liu T, *et al.* 2009. *Biol Direct*. 4:40.

Gene ID

[12505](#)

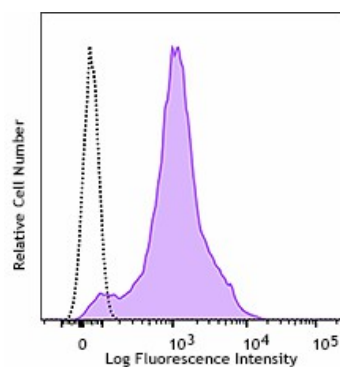
Related Protocols

[Cell Surface Flow Cytometry Staining Protocol](#)

Other Formats

Purified anti-mouse/human CD44 Recombinant Antibody, PE/Cyanine7 anti-mouse/human CD44 Recombinant, APC anti-mouse/human CD44 Recombinant Antibody, FITC anti-mouse/human CD44 Recombinant Antibody, PE anti-mouse/human CD44 Recombinant Antibody

Product Data



C57BL/6 splenocytes were stained with anti-mouse/human CD44 recombinant (clone QA19A43) FITC (filled histogram) or rat IgG2a, κ FITC isotype control (open histogram).

For research use only. Not for diagnostic use. Not for resale. BioLegend will not be held responsible for patent infringement or other violations that may occur with the use of our products.

*These products may be covered by one or more Limited Use Label Licenses (see the BioLegend Catalog or our website, www.biolegend.com/ordering#license). BioLegend products may not be transferred to third parties, resold, modified for resale, or used to manufacture commercial products, reverse engineer functionally similar materials, or to provide a service to third parties without written approval of BioLegend. By use of these products you accept the terms and conditions of all applicable Limited Use Label Licenses. Unless otherwise indicated, these products are for research use only and are not intended for human or animal diagnostic, therapeutic or commercial use.

BioLegend Inc., 8999 BioLegend Way, San Diego, CA 92121 www.biolegend.com
Toll-Free Phone: 1-877-Bio-Legend (246-5343) Phone: (858) 768-5800 Fax: (877) 455-9587