

PE anti-NF-κB p65 Antibody

Catalog# / Size	653003 / 25 tests 653004 / 100 tests
Clone	14G10A21
Regulatory Status	RUO
Other Names	Nuclear factor NF-kappa-B p65 subunit (NF-κB p65), Rel-A, transcription factor p65, Nuclear factor of kappa light polypeptide gene enhancer in B-cells 3 (NFKB3)
Isotype	Mouse IgG2b, κ
Description	NF-κB p65 is a member of REL-like domain containing protein family, which forms a NF-κB complex with the other family members: NF-κB1 (p105/p50) or NF-κB2 (p100/p52). The NF-κB complex is inactivated and held in the cytoplasm by the NF-κB inhibitor IκB. In response to activation stimuli, IκB kinases (IKKs) phosphorylates IκB, resulting in degradation of IκB and liberation of NF-κB complex. The activated NF-κB complex translocates to the nucleus and binds to κB sites in the DNA of their target genes.

Product Details

Verified Reactivity	Human
Antibody Type	Monoclonal
Host Species	Mouse
Immunogen	Partial human NF-κB p65 recombinant protein (451-551 aa)
Formulation	Phosphate-buffered solution, pH 7.2, containing 0.09% sodium azide and BSA (origin USA)
Preparation	The antibody was purified by affinity chromatography and conjugated with PE under optimal conditions.
Concentration	Lot-specific (to obtain lot-specific concentration, please enter the lot number in our Concentration and Expiration Lookup or Certificate of Analysis online tools.)
Storage & Handling	The antibody solution should be stored undiluted between 2°C and 8°C, and protected from prolonged exposure to light. Do not freeze.
Application	ICFC - Quality tested
Recommended Usage	Each lot of this antibody is quality control tested by intracellular immunofluorescent staining with flow cytometric analysis . For flow cytometric staining, the suggested use of this reagent is 5 μl per million cells in 100 μl staining volume or 5 μl per 100 μl of whole blood.
Excitation Laser	Blue Laser (488 nm) Green Laser (532 nm)/Yellow-Green Laser (561 nm)
Application Notes	This clone is not recommended for ChIP (Chromatin Immunoprecipitation) assays (as determined by in-house testing).
RRID	AB_2562768 (BioLegend Cat. No. 653003) AB_2562769 (BioLegend Cat. No. 653004)

Antigen Details

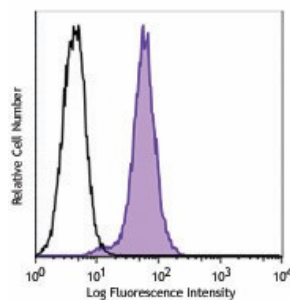
Structure	65 kD protein containing a Rel homology domain (RHD), an activation domain, and a 9aaTAD domain.
Distribution	The inactivated NF-κB complex containing p65 subunit is bound to IκB and is localized to cytoplasm. Upon activation, IκB is phosphorylated and degraded. The activated NF-κB complex is in turn translocated to the nucleus as a transcription factor.

Function	NF- κ B is a homodimeric or heterodimeric complex formed by the Rel-like domain-containing proteins. The most abundant form is p65 (RelA) - p50 (NF- κ B1) heterodimer complex. The NF- κ B complex is a ubiquitously expressed transcription factor which is involved in various biological functions, such as cell growth, tumorigenesis, differentiation, apoptosis, inflammation, and immune responses.
Interaction	Interacts with NF- κ B1 (p105/p50) or NF- κ B2 (p100/p52) to form heterodimeric NF- κ B complex. Interacts with HDAC1, HDAC3, and CBP. Interaction with MEN1 inhibits transactivation activity of NF- κ B complex.
Cell Type	B cells
Biology Area	Apoptosis/Tumor Suppressors/Cell Death, Cell Biology, Immunology, Neuroscience, Neuroscience Cell Markers, Signal Transduction, Transcription Factors
Molecular Family	Nuclear Markers
Antigen References	<ol style="list-style-type: none"> 1. Li Z, <i>et al.</i> 1997. <i>Mol. Cell. Biol.</i> 17:6184. 2. Sacconi S, <i>et al.</i> 2004. <i>J. Exp. Med.</i> 200:107. 3. Nolan GP, <i>et al.</i> 1991. <i>Cell</i> 64:961. 4. Chen LF, <i>et al.</i> 2001. <i>Science</i> 293:1653. 5. Hansen SK, <i>et al.</i> 1994. <i>Mol. Cell. Biol.</i> 14:2593. 6. Chapman NR, <i>et al.</i> 2002. <i>Biochem J.</i> 366:459.
Gene ID	4790

Other Formats

Purified anti-NF- κ B p65, PE anti-NF- κ B p65, APC anti-NF- κ B p65

Product Data



Human lung adenocarcinoma epithelial cell line A549 was fixed and permeabilized with FOXP3 Fix/Perm Buffer Set, and then stained with NF- κ B p65 (clone 14G10A21) PE (filled histogram) or mouse IgG2b, κ PE isotype control (open histogram).

For research use only. Not for diagnostic use. Not for resale. BioLegend will not be held responsible for patent infringement or other violations that may occur with the use of our products.

*These products may be covered by one or more Limited Use Label Licenses (see the BioLegend Catalog or our website, www.biolegend.com/ordering#license). BioLegend products may not be transferred to third parties, resold, modified for resale, or used to manufacture commercial products, reverse engineer functionally similar materials, or to provide a service to third parties without written approval of BioLegend. By use of these products you accept the terms and conditions of all applicable Limited Use Label Licenses. Unless otherwise indicated, these products are for research use only and are not intended for human or animal diagnostic, therapeutic or commercial use.

BioLegend Inc., 8999 BioLegend Way, San Diego, CA 92121 www.biolegend.com
Toll-Free Phone: 1-877-Bio-Legend (246-5343) Phone: (858) 768-5800 Fax: (877) 455-9587