

Purified anti-ALDH1L1 Antibody

Catalog# / Size	856801 / 25 µg 856802 / 100 µg
Clone	N103/39
Regulatory Status	RUO
Other Names	FDH
Isotype	Mouse IgG1, κ
Description	Aldehyde dehydrogenase family 1 member L1 (ALDH1L1) was originally discovered as an enzyme that catalyzes the conversion of 10-formyltetrahydrofolate to tetrahydrofolate, with NADPH and CO ₂ as by products. ALDH1L1 is most exclusively expressed by astroglial cells ¹ implicating these cells as the major components of folate-dependent formate oxidation in the brain.

Product Details

Verified Reactivity	Human, Mouse
Antibody Type	Monoclonal
Host Species	Mouse
Formulation	Phosphate-buffered solution, pH 7.2, containing 0.09% sodium azide.
Preparation	The antibody was purified by affinity chromatography.
Concentration	0.5 mg/ml
Storage & Handling	The antibody solution should be stored undiluted between 2°C and 8°C.
Application	WB - Quality tested ICC, IHC-F - Reported in the literature, not verified in house
Recommended Usage	Each lot of this antibody is quality control tested by Western blotting . For Western blotting, the suggested use of this reagent is 0.2 - 5.0 µg per ml. It is recommended that the reagent be titrated for optimal performance for each application.
Application Notes	Additional reported applications (for the relevant) formats include immunocytochemistry ³ and immunohistochemistry on frozen tissue sections ¹ .
Application References (PubMed link indicates BioLegend citation)	1. Zuo H, <i>et al.</i> 2018. <i>J Neurosci.</i> 38(9):2359 (IHC-F) 2. Kidana K, <i>et al.</i> 2018. <i>EMBO Mol Med.</i> 10:e8184 (WB) 3. Tian E, <i>et al.</i> 2016. <i>Cell Reports.</i> 16:781 (ICC)
RRID	AB_2783463 (BioLegend Cat. No. 856801) AB_2783464 (BioLegend Cat. No. 856802)

Antigen Details

Structure	ALDH1L1 is a 902 amino acid protein with an apparent molecular mass of ~ 99 kD.
Distribution	Tissue Distribution: Brain, Liver, Colon, and Kidney. Cellular Distribution: Extracellular, cytosol, and plasma membrane.
Function	ALDH1L1 catalyzes the conversion of 10-formyltetrahydrofolate to tetrahydrofolate.
Biology Area	Cell Biology, Neuroinflammation, Neuroscience, Neuroscience Cell Markers
Antigen References	

1. Neymerer V, *et al.* 1997. *Brain Res.* 766(1-2): 195
2. Brandebura AN, *et al.* 2018. *Dev Neurobiol.* doi: 10.1002/dneu.22633.
3. Garwood CJ, *et al.* 2017. *Neuropathol Appl Neurobiol.* 43(4):281

Gene ID [10840](#)
[107747](#)

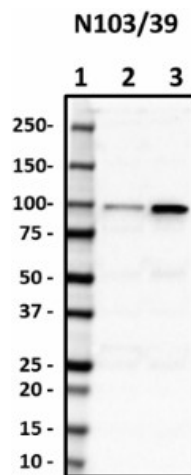
Related Protocols

[Western Blotting Protocol](#)

Other Formats

Purified anti-ALDH1L1, HRP anti-ALDH1L1

Product Data



Western blot of purified anti-ALDH1L1 antibody (clone N103/39). Lane 1: Molecular weight marker; Lane 2: 30 μ g of human brain lysate; Lane 3: 5 μ g of mouse liver lysate. The blot was incubated with 0.2 μ g/mL of the primary antibody overnight at 4°C, followed by incubation with HRP-labeled goat anti-mouse IgG (Cat. No. 405306). Enhanced chemiluminescence was used as the detection system.

For research use only. Not for diagnostic use. Not for resale. BioLegend will not be held responsible for patent infringement or other violations that may occur with the use of our products.

*These products may be covered by one or more Limited Use Label Licenses (see the BioLegend Catalog or our website, www.biolegend.com/ordering#license). BioLegend products may not be transferred to third parties, resold, modified for resale, or used to manufacture commercial products, reverse engineer functionally similar materials, or to provide a service to third parties without written approval of BioLegend. By use of these products you accept the terms and conditions of all applicable Limited Use Label Licenses. Unless otherwise indicated, these products are for research use only and are not intended for human or animal diagnostic, therapeutic or commercial use.

BioLegend Inc., 8999 BioLegend Way, San Diego, CA 92121 www.biolegend.com
Toll-Free Phone: 1-877-Bio-Legend (246-5343) Phone: (858) 768-5800 Fax: (877) 455-9587