

Alexa Fluor® 488 anti-mouse CD3 Antibody

Catalog# / Size	100212 / 25 µg 100210 / 100 µg
Clone	17A2
Regulatory Status	RUO
Other Names	T cell antigen receptor complex, T3
Isotype	Rat IgG2b, κ
Description	CD3, also known as T3, is a member of the Ig superfamily and primarily expressed on T cells, NK-T cells, and at different levels on thymocytes during T cell differentiation. CD3 is composed of CD3ε, δ, γ and ζ chains. It forms a TCR complex by associating with TCR α/β or γ/δ chains. CD3 plays a critical role in TCR signal transduction, T cell activation, and antigen recognition by binding the peptide/MHC antigen complex

Product Details

Verified Reactivity	Mouse
Antibody Type	Monoclonal
Host Species	Rat
Immunogen	γδTCR-positive T-T hybridoma D1
Formulation	Phosphate-buffered solution, pH 7.2, containing 0.09% sodium azide.
Preparation	The antibody was purified by affinity chromatography and conjugated with Alexa Fluor® 488 under optimal conditions.
Concentration	0.5 mg/mL
Storage & Handling	The antibody solution should be stored undiluted between 2°C and 8°C, and protected from prolonged exposure to light. Do not freeze.
Application	FC - Quality tested IHC-F, 3D IHC - Verified
Recommended Usage	Each lot of this antibody is quality control tested by immunofluorescent staining with flow cytometric analysis . For flow cytometric staining, the suggested use of this reagent is ≤1.0 µg per million cells in 100 µL volume. For immunohistochemical staining on frozen tissue sections, the suggested use of this reagent is 5.0 - 10 µg per mL. For 3D immunohistochemistry on formalin-fixed tissues, a concentration of 5.0 µg/mL is suggested. It is recommended that the reagent be titrated for optimal performance for each application. * Alexa Fluor® 488 has a maximum emission of 519 nm when it is excited at 488 nm. Alexa Fluor® and Pacific Blue™ are trademarks of Life Technologies Corporation. View full statement regarding label licenses
Excitation Laser	Blue Laser (488 nm)
Application Notes	Additional reported application (for relevant formats) include: spatial biology (IBEX) ^{1,2} .
Application References (PubMed link indicates BioLegend citation)	1. Radtke AJ, <i>et al.</i> 2020. <i>Proc Natl Acad Sci U S A.</i> 117:33455-65. (SB) PubMed 2. Radtke AJ, <i>et al.</i> 2022. <i>Nat Protoc.</i> 17:378-401. (SB) PubMed
Product Citations	1. Schneider C, <i>et al.</i> 2018. <i>Cell.</i> 174:271. PubMed 2. Wu J, <i>et al.</i> 2022. <i>Nat Commun.</i> 13:7321. PubMed 3. Suresh R, <i>et al.</i> 2020. <i>J Immunother Cancer.</i> 8:. PubMed

4. Okajima T, *et al.* 2021. *Front Immunol.* 12:738041. [PubMed](#)
5. Bieber M, *et al.* 2021. *Int J Mol Sci.* 22:. [PubMed](#)
6. Datta S, *et al.* 2014. *J Leukoc Biol.* 95:853. [PubMed](#)
7. Baptista AP *et al.* 2019. *Immunity.* 50(5):1188-1201 . [PubMed](#)
8. Dauer Née Joppe K, *et al.* 2021. *J Neurochem.* 159:554. [PubMed](#)
9. Upadhyaya P, *et al.* 2021. *J Immunother Cancer.* 9:00. [PubMed](#)
10. Chow MT *et al.* 2019. *Immunity.* 50(6):1498-1512 . [PubMed](#)
11. Kodumudi KN, *et al.* 2019. *Front Immunol.* 10:1939. [PubMed](#)
12. Logan C, Bowen C, and Menko A 2017. *Sci Rep.* . 10.1038/s41598-017-16456-5. [PubMed](#)
13. Brandt S, *et al.* 2020. *J Am Soc Nephrol.* 31:2589. [PubMed](#)
14. Park JJ, *et al.* 2021. *Nat Commun.* 12:1222. [PubMed](#)
15. Joseph R, *et al.* 2021. *Br J Cancer.* 125:176. [PubMed](#)
16. Wang C, *et al.* 2021. *Cell Stem Cell.* . [PubMed](#)
17. Wang H *et al.* 2017. *Developmental cell.* 40(6):566-582 . [PubMed](#)
18. Lau CH, *et al.* 2022. *Antioxidants (Basel).* 11:. [PubMed](#)
19. Wan W, *et al.* 2013. *Cardiovasc Res.* 97:580. [PubMed](#)
20. Wan W, *et al.* 2015. *Cardiovasc Res.* 106:478. [PubMed](#)
21. Amor C, *et al.* 2020. *Nature.* 583:127. [PubMed](#)
22. Wei SC, *et al.* 2020. *Cancer Discov.* . [PubMed](#)
23. Mills C, *et al.* 2022. *Cells.* 11:. [PubMed](#)
24. Wong HS, *et al.* 2021. *Cell.* . [PubMed](#)
25. Xiao S, *et al.* 2007. *J Exp Med.* 204:1691. [PubMed](#)
26. Mooney C, *et al.* 2017. *International Journal of Molecular Sciences.* 10.3390/ijms18051037. [PubMed](#)
27. Hsieh C, *et al.* 2014. *J Immunol.* 193:3693. [PubMed](#)
28. Counoupas C, *et al.* 2020. *NPJ Vaccines.* 0.28125. [PubMed](#)
29. Wang B, *et al.* 2021. *J Immunother Cancer.* 9:. [PubMed](#)
30. Faust HJ, *et al.* 2020. *J Clin Invest.* 130:5493. [PubMed](#)
31. Pietronigro E, *et al.* 2019. *Sci Rep.* 9:12055. [PubMed](#)
32. Hanihara-Tatsuzawa F, *et al.* 2014. *J Biol Chem.* 389:30925. [PubMed](#)
33. Broderick L, *et al.* 2019. *Nat Commun.* 10:3644. [PubMed](#)
34. Karandikar SH, *et al.* 2019. *Anal Chem.* 91:3405. [PubMed](#)
35. Riding AM, *et al.* 2022. *iScience.* 25:104660. [PubMed](#)
36. Langhauser F, *et al.* 2014. *Stroke.* 45:1799. [PubMed](#)
37. Karandikar SH, *et al.* 2019. *JCI Insight.* 5. [PubMed](#)
38. Wang S, *et al.* 2022. *J Inflamm Res.* 14:7107. [PubMed](#)
39. Li MY, *et al.* 2021. *Developmental Cell.* .: [PubMed](#)
40. MaruYama T, *et al.* 2015. *J Leukoc Biol.* 98: 385-393. [PubMed](#)
41. Cheng Q, *et al.* 2018. *PLoS Pathog.* 14:e1007440. [PubMed](#)
42. Liu Y, *et al.* 2019. *Sci Rep.* 9:18970. [PubMed](#)
43. Zhao L, *et al.* 2017. *Nat Commun.* . 10.1038/s41467-017-01181-4. [PubMed](#)
44. Xu JL, *et al.* 2022. *Front Pharmacol.* 13:911663. [PubMed](#)
45. Han P, *et al.* 2020. *Sci Adv.* 6:eaaz1580. [PubMed](#)
46. Thurlow LR, *et al.* 2018. *Cell Host Microbe.* 24:261. [PubMed](#)
47. Sadtler K, *et al.* 2017. *Tissue Eng Part A.* 23:1044. [PubMed](#)
48. Lee-Sayer SSM, *et al.* 2018. *Eur J Immunol.* 48:803. [PubMed](#)
49. Zhou P, *et al.* 2022. *Mol Ther Oncolytics.* 25:236. [PubMed](#)
50. Kuhn NF *et al.* 2019. *Cancer cell.* 35(3):473-488 . [PubMed](#)
51. Hsing CH, *et al.* 2021. *Biomedicines.* 9:. [PubMed](#)

RRID AB_493530 (BioLegend Cat. No. 100212)
 AB_389301 (BioLegend Cat. No. 100210)

Antigen Details

Structure	Ig superfamily, CD3/TCR, 20 kD
Distribution	Thymocytes (differentiation dependent), mature T cells, NK-T cells
Function	Antigen recognition, TCR signal transduction, T cell activation
Ligand/Receptor	Peptide antigen/MHC-complex
Antigen References	1. Barclay A, <i>et al.</i> 1997. <i>The Leukocyte Antigen FactsBook</i> Academic Press. 2. Davis MM. 1990. <i>Annu. Rev. Biochem.</i> 59:475. 3. Weiss A, <i>et al.</i> 1994. <i>Cell</i> 76:263.
Gene ID	12502

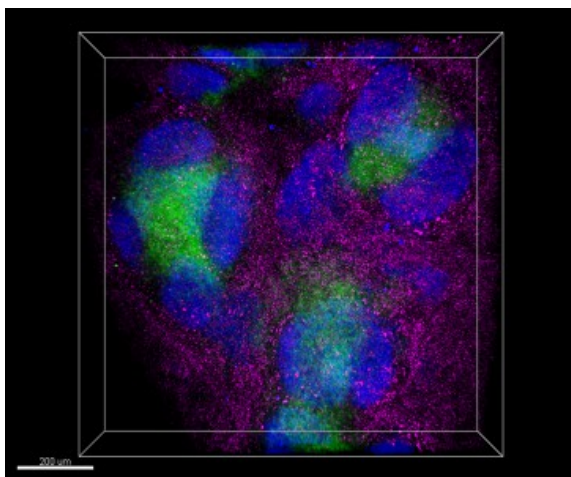
Related Protocols

[Immunohistochemistry Protocol for Frozen Sections](#)

Other Formats

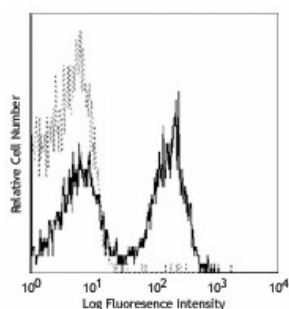
FITC anti-mouse CD3, PE anti-mouse CD3, Purified anti-mouse CD3, Alexa Fluor® 647 anti-mouse CD3, Alexa Fluor® 488 anti-mouse CD3, Pacific Blue™ anti-mouse CD3, Alexa Fluor® 700 anti-mouse CD3, PerCP/Cyanine5.5 anti-mouse CD3, PE/Cyanine7 anti-mouse CD3, APC/Cyanine7 anti-mouse CD3, Brilliant Violet 421™ anti-mouse CD3, Brilliant Violet 570™ anti-mouse CD3, Brilliant Violet 650™ anti-mouse CD3, Brilliant Violet 785™ anti-mouse CD3, Brilliant Violet 510™ anti-mouse CD3, APC anti-mouse CD3, Ultra-LEAF™ Purified anti-mouse CD3, Brilliant Violet 605™ anti-mouse CD3, Alexa Fluor® 594 anti-mouse CD3, Brilliant Violet 711™ anti-mouse CD3, Biotin anti-mouse CD3, PE/Dazzle™ 594 anti-mouse CD3, APC/Fire™ 750 anti-mouse CD3, Brilliant Violet 750™ anti-mouse CD3, TotalSeq™-A0182 anti-mouse CD3, TotalSeq™-B0182 anti-mouse CD3, Spark Blue™ 550 anti-mouse CD3, Spark NIR™ 685 anti-mouse CD3, TotalSeq™-C0182 anti-mouse CD3, APC/Fire™ 810 anti-mouse CD3, PE/Fire™ 640 anti-mouse CD3, Spark YG™ 570 anti-mouse CD3, PE/Fire™ 700 anti-mouse CD3, PE/Cyanine5 anti-mouse CD3, Spark Blue™ 574 anti-mouse CD3 Antibody, Spark Violet™ 423 anti-mouse CD3, PE/Fire™ 810 anti-mouse CD3, Spark Red™ 718 anti-mouse CD3

Product Data

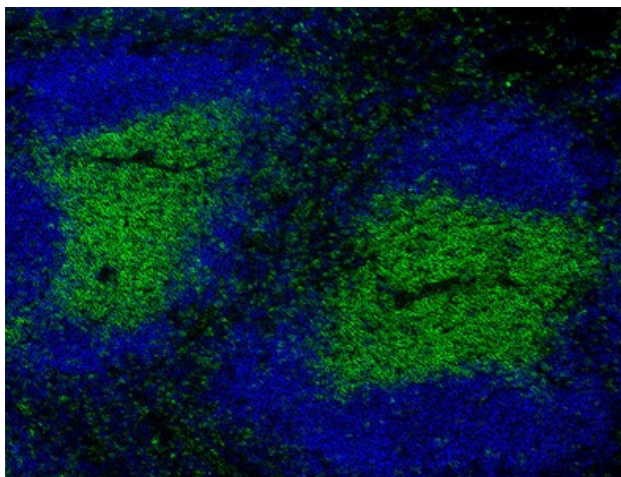


Paraformaldehyde-fixed (4%), 500 μm-thick mouse spleen section was processed according to the Ce3DTM Tissue Clearing Kit protocol (cat. no. 427701). The section was costained with anti-mouse CD3 Antibody (clone 17A2) Alexa Fluor® 488 at 5 μg/mL (green), anti-mouse IgD Antibody (clone 11-26c.2a) Alexa Fluor® 594 at 5 μg/mL (blue), and anti-mouse CD68 Antibody (clone FA-11) Alexa Fluor® 647 at 5 μg/mL (magenta). The section was then optically cleared and mounted in a sample chamber. The image was captured with a 10X objective using Zeiss 780 confocal microscope and processed by Imaris image analysis software.

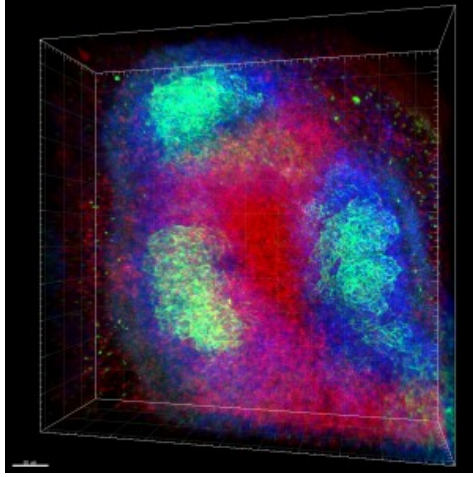
[Watch the video.](#)



C57BL/6 mouse splenocytes stained with 17A2 Alexa Fluor® 488



C57BL/6 mouse frozen spleen section was fixed with 4% paraformaldehyde (PFA) for 10 minutes at room temperature and blocked with 5% FBS for 30 minutes at room temperature. Then, the section was stained with 10 μg/mL CD3 (Clone 17A2) Alexa Fluor® 488 (green) and B220 (Clone RA3-6B2) Brilliant Violet 421™ (blue), overnight at 4°C. The image was captured by 10X objective.



Formalin-fixed, 300 micron-thick mouse spleen section was blocked, permeabilized and stained overnight with CD3 (clone 17A2) Alexa Fluor® 488 (red), CD21/35 (CR2/CR1)(clone 7E9) Alexa Fluor® 594 (green), and CD45R/B220 (clone RA3-6B2) Alexa Fluor® 647 (blue) all at 5 µg/mL, optically cleared, then analyzed at 215 µm imaging depth on a confocal microscope.

For research use only. Not for diagnostic use. Not for resale. BioLegend will not be held responsible for patent infringement or other violations that may occur with the use of our products.

*These products may be covered by one or more Limited Use Label Licenses (see the BioLegend Catalog or our website, www.biolegend.com/ordering#license). BioLegend products may not be transferred to third parties, resold, modified for resale, or used to manufacture commercial products, reverse engineer functionally similar materials, or to provide a service to third parties without written approval of BioLegend. By use of these products you accept the terms and conditions of all applicable Limited Use Label Licenses. Unless otherwise indicated, these products are for research use only and are not intended for human or animal diagnostic, therapeutic or commercial use.

BioLegend Inc., 8999 BioLegend Way, San Diego, CA 92121 www.biolegend.com
Toll-Free Phone: 1-877-Bio-Legend (246-5343) Phone: (858) 768-5800 Fax: (877) 455-9587