

Alexa Fluor® 700 anti-human CD155 (PVR) Antibody

Catalog# / Size	337629 / 25 tests 337630 / 100 tests
Clone	SKII.4
Regulatory Status	RUO
Other Names	Poliovirus receptor (PVR), nectin-like 5
Isotype	Mouse IgG1, κ
Description	CD155, known as poliovirus receptor (PVR) or nectin-like 5, is a 70 kD type I transmembrane glycoprotein. It is a nectin-like molecule belonging to Ig superfamily. CD155 is primarily found on endothelial cells, monocytes, epithelia and central nervous system. CD155 is an adhesion molecule involved in cell-cell and cell-matrix adhesion through interaction with CD226, CD96 (Tactile), nectin-1, -2, and -3 (CD111, CD112, CD113), and vitronectin. It also serves as a receptor for poliovirus and cytomegalovirus.

Product Details

Verified Reactivity	Human
Antibody Type	Monoclonal
Host Species	Mouse
Immunogen	SK-N-S1 human neuroblastoma cells.
Formulation	Phosphate-buffered solution, pH 7.2, containing 0.09% sodium azide and BSA (origin USA)
Preparation	The antibody was purified by affinity chromatography and conjugated with Alexa Fluor® 700 under optimal conditions.
Concentration	Lot-specific (to obtain lot-specific concentration, please enter the lot number in our Concentration and Expiration Lookup or Certificate of Analysis online tools.)
Storage & Handling	The antibody solution should be stored undiluted between 2°C and 8°C, and protected from prolonged exposure to light. Do not freeze.
Application	FC - Quality tested
Recommended Usage	Each lot of this antibody is quality control tested by immunofluorescent staining with flow cytometric analysis . For flow cytometric staining, the suggested use of this reagent is 5 µl per million cells in 100 µl staining volume or 5 µl per 100 µl of whole blood. * Alexa Fluor® 700 has a maximum emission of 719 nm when it is excited at 633 nm / 635 nm. Prior to using Alexa Fluor® 700 conjugate for flow cytometric analysis, please verify your flow cytometer's capability of exciting and detecting the fluorochrome. Alexa Fluor® and Pacific Blue™ are trademarks of Life Technologies Corporation. View full statement regarding label licenses
Excitation Laser	Red Laser (633 nm)
Application Notes	Additional reported applications include: block binding of PVR ligands CD226 and CD96 to PVR, immunoprecipitation, and western blot.
Application References	1. Fuchs A, <i>et al.</i> 2004. <i>J. Immunol.</i> 172:3994
(PubMed link indicates BioLegend citation)	
RRID	AB_2810523 (BioLegend Cat. No. 337629) AB_2810524 (BioLegend Cat. No. 337630)

Antigen Details

Structure	Type I glycoprotein, Ig superfamily
Distribution	Monocytes, endothelial cells, epithelia, central nervous system
Function	Cell-cell and cell-matrix adhesion
Ligand/Receptor	CD226, CD96, nectin-1, -2, and -3, vitronectin, CD155, poliovirus
Cell Type	Endothelial cells, Epithelial cells, Monocytes, Tregs
Biology Area	Immunology, Innate Immunity
Molecular Family	Adhesion Molecules, CD Molecules, Immune Checkpoint Receptors
Antigen References	1. Zola H, <i>et al.</i> eds. 2007. <i>Leukocyte and Stromal Cell Molecules: The CD Markers</i> . Wiley-Liss A John Wiley & Sons Inc, Publication 2. Bottino PD, <i>et al.</i> 2005. <i>Mol. Immunol.</i> 42:463 3. Tahara-Hanaoka S, <i>et al.</i> 2004. <i>Intl. Immunol.</i> 16:533
Gene ID	5817

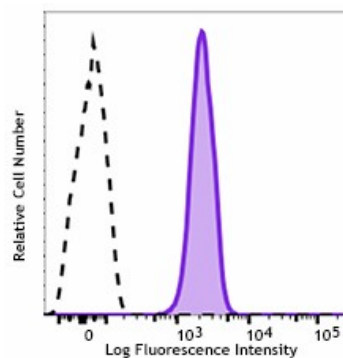
Related Protocols

[Cell Surface Flow Cytometry Staining Protocol](#)

Other Formats

PE anti-human CD155 (PVR), Purified anti-human CD155 (PVR), PerCP/Cyanine5.5 anti-human CD155 (PVR), PE/Cyanine7 anti-human CD155 (PVR), PE/Dazzle™ 594 anti-human CD155 (PVR), APC anti-human CD155 (PVR), Alexa Fluor® 647 anti-human CD155 (PVR), Biotin anti-human CD155 (PVR), TotalSeq™-A0023 anti-human CD155 (PVR), APC/Fire™ 750 anti-human CD155 (PVR), Brilliant Violet 510™ anti-human CD155 (PVR), Brilliant Violet 421™ anti-human CD155 (PVR), FITC anti-human CD155 (PVR), Alexa Fluor® 700 anti-human CD155 (PVR), TotalSeq™-B0023 anti-human CD155 (PVR), TotalSeq™-C0023 anti-human CD155 (PVR), TotalSeq™-D0023 anti-human CD155 (PVR)

Product Data



Human histiocytic lymphoma cells (U937 cells) were stained with anti-human CD155 (PVR) (clone SK11.4) Alexa Fluor® 700 (filled histogram) or mouse IgG1, κ Alexa Fluor® 700 isotype control

For research use only. Not for diagnostic use. Not for resale. BioLegend will not be held responsible for patent infringement or other violations that may occur with the use of our products.

*These products may be covered by one or more Limited Use Label Licenses (see the BioLegend Catalog or our website, www.biolegend.com/ordering#license). BioLegend products may not be transferred to third parties, resold, modified for resale, or used to manufacture commercial products, reverse engineer functionally similar materials, or to provide a service to third parties without written approval of BioLegend. By use of these products you accept the terms and conditions of all applicable Limited Use Label Licenses. Unless otherwise indicated, these products are for research use only and are not intended for human or animal diagnostic, therapeutic or commercial use.

BioLegend Inc., 8999 BioLegend Way, San Diego, CA 92121 www.biolegend.com
Toll-Free Phone: 1-877-Bio-Legend (246-5343) Phone: (858) 768-5800 Fax: (877) 455-9587

