

Anti-GPP130 Antibody (Previously Covance catalog# PRB-144C)

Catalog# / Size	923801 / 200 µL
Clone	Poly19238
Regulatory Status	RUO
Other Names	GIMPC, GOLPH4, Golgi Integral Membrane Protein 4, Golgi Phosphoprotein 4, Type II Golgi Membrane Protein, Golgi Phosphoprotein Of 130 kD, Golgi Integral Membrane Protein, Cis, 130 kD Golgi-Localized Phosphoprotein, Cis Golgi-
Previously	Covance Catalog# PRB-144C
Isotype	Rabbit Polyclonal IgG
Description	The transmembrane protein GPP130 is localized to the cis-Golgi, where it is targeted by virtue of its luminal coiled-coil domain. GPP130 has been a revealing marker of early Golgi vesicle trafficking.

Product Details

Verified Reactivity	Monkey, Rabbit, Mouse, Rat, Rodent, Human
Antibody Type	Polyclonal
Host Species	Rabbit
Immunogen	This antibody was raised against a recombinant GST-GPP130 fusion protein.
Preparation	Serum
Concentration	Lot-specific (to obtain lot-specific concentration, please enter the lot number in our Concentration and Expiration Lookup or Certificate of Analysis online tools.)
Storage & Handling	Store at -20°C. Upon initial thawing, apportion into working aliquots and store at -20°C. Avoid repeated freeze-thaw cycles to prevent denaturing the antibody. For long-term storage, keep the antibody at -80°C.
Application	ICC - Quality tested
Recommended Usage	Each lot of this antibody is quality control tested by immunocytochemistry. For immunocytochemistry, a dilution range of 1:100 - 1:250 is recommended. It is recommended that the reagent be titrated for optimal performance for each application.
Application Notes	This antibody is effective in immunoblotting (WB), immunocytochemistry (ICC) and immunoprecipitation (IP). *Predicted MW = 130 kD This product may contain other non-IgG subtypes.
Application References	
(PubMed link indicates BioLegend citation)	<ol style="list-style-type: none">1. Puri S, <i>et al.</i> 2002. <i>Traffic</i>. 3:641.2. Bachert C, <i>et al.</i> 2001. <i>Mol Biol Cell</i>. 12:3152.3. Linstedt AD, <i>et al.</i> 1997. <i>Mol Biol Cell</i>. 8:1073.
Product Citations	<ol style="list-style-type: none">1. Rebane AA, <i>et al.</i> 2020. <i>FEBS Lett</i>. 594:1132. PubMed2. Yue X, <i>et al.</i> 2021. <i>Commun Biol</i>. 4:1370. PubMed3. Lee G, <i>et al.</i> 2016. <i>J Cell Biol</i>. 215(5):705-718. PubMed4. Wakana Y, <i>et al.</i> 2021. <i>J Cell Biol</i>. 220: . PubMed5. Hasegawa H, <i>et al.</i> 2016. <i>Biochim Biophys Acta</i>. 1863: 1534-1551. PubMed6. Choi EK, <i>et al.</i> 2019. <i>FASEB J</i>. 33:2228. PubMed7. Groux-Degroote S, <i>et al.</i> 2018. <i>FEBS J</i>. 285:3442. PubMed8. Choi EK, <i>et al.</i> 2018. <i>Sci Rep</i>. 8:3163. PubMed

RRID

AB_2565442 (BioLegend Cat. No. 923801)

Antigen Details

Biology Area	Cell Biology, Cell Motility/Cytoskeleton/Structure, Neuroscience, Neuroscience Cell Markers
Molecular Family	Golgi Markers, Phospho-Proteins
Gene ID	27333

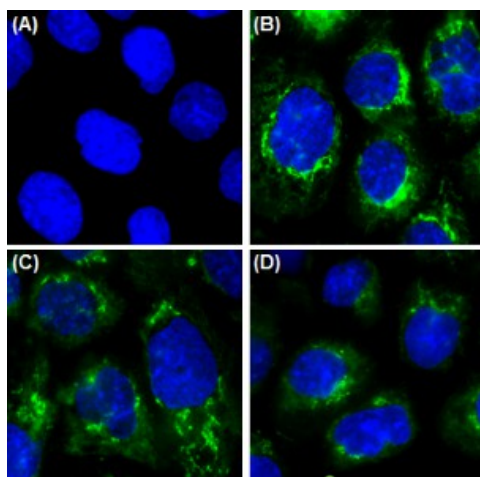
Related Protocols

[Immunocytochemistry Staining Protocol](#)

Other Formats

Anti-GPP130

Product Data



Immunofluorescence of A431 cells with (A) Rabbit Isotype control (Negative, Cat. No. 910801) or (B-D) GPP130 primary Antibody (Poly19238). Alexa Fluor® 488 (Green) Donkey anti-Rabbit IgG (Cat. No. 406416) was used as secondary antibody. Nuclei were counterstained with DAPI (Blue, Cat. No. 422801). The image was captured with a 60X objective using KEYENCE BZ-X700 fluorescence microscope. Exposure time (Seconds) for (A) is 1/20, and (B-D) is 1/60. Concentrations for (A, B) is 1/100, (C) is 1/250, (D) is 1/500.

For research use only. Not for diagnostic use. Not for resale. BioLegend will not be held responsible for patent infringement or other violations that may occur with the use of our products.

*These products may be covered by one or more Limited Use Label Licenses (see the BioLegend Catalog or our website, www.biolegend.com/ordering#license). BioLegend products may not be transferred to third parties, resold, modified for resale, or used to manufacture commercial products, reverse engineer functionally similar materials, or to provide a service to third parties without written approval of BioLegend. By use of these products you accept the terms and conditions of all applicable Limited Use Label Licenses. Unless otherwise indicated, these products are for research use only and are not intended for human or animal diagnostic, therapeutic or commercial use.

BioLegend Inc., 8999 BioLegend Way, San Diego, CA 92121 www.biolegend.com
Toll-Free Phone: 1-877-Bio-Legend (246-5343) Phone: (858) 768-5800 Fax: (877) 455-9587