

FITC anti-human CD14 Antibody

Catalog# / Size	325603 / 25 tests 325604 / 100 tests
Clone	HCD14
Regulatory Status	RUO
Other Names	LPS receptor
Isotype	Mouse IgG1, κ
Description	CD14 is a 53-55 kD glycosylphosphatidylinositol (GPI)-linked membrane glycoprotein also known as LPS receptor. CD14 is expressed at high levels on monocytes and macrophages, and at lower levels on granulocytes. Some dendritic cell populations such as interfollicular dendritic cells, reticular dendritic cells, and Langerhans cells have also been reported to express CD14. As a high-affinity receptor for LPS, CD14 is involved in the clearance of gram-negative pathogens and in the upregulation of adhesion molecules and cytokines expression in monocytes and neutrophils.

Product Details

Verified Reactivity	Human
Antibody Type	Monoclonal
Host Species	Mouse
Formulation	Phosphate-buffered solution, pH 7.2, containing 0.09% sodium azide and BSA (origin USA)
Preparation	The antibody was purified by affinity chromatography, and conjugated with FITC under optimal conditions.
Concentration	Lot-specific (to obtain lot-specific concentration, please enter the lot number in our Concentration and Expiration Lookup or Certificate of Analysis online tools.)
Storage & Handling	The antibody solution should be stored undiluted between 2°C and 8°C, and protected from prolonged exposure to light. Do not freeze.
Application	FC - Quality tested
Recommended Usage	Each lot of this antibody is quality control tested by immunofluorescent staining with flow cytometric analysis . For flow cytometric staining, the suggested use of this reagent is 5 μ l per million cells in 100 μ l staining volume or 5 μ l per 100 μ l of whole blood.
Excitation Laser	Blue Laser (488 nm)
Application Notes	Additional reported applications (for the relevant formats) include: immunofluorescence microscopy. This clone was tested in-house and does not work on formalin fixed paraffin-embedded (FFPE) tissue.
Application References	<ol style="list-style-type: none"> McMichael A, <i>et al.</i> 1987. Leucocyte Typing III. Oxford University Press. New York. Knapp W, <i>et al.</i> Eds. 1989. Leucocyte Typing IV. Oxford University Press. New York. Schlossman S, <i>et al.</i> Eds. 1995. Leucocyte Typing V. Oxford University Press. New York.
(PubMed link indicates BioLegend citation)	
Product Citations	<ol style="list-style-type: none"> Toepfner N <i>et al.</i> 2018. eLife. 7 pii: e29213. PubMed Sajadi MM, <i>et al.</i> 2018. Cell. 173:1783. PubMed Yang H, <i>et al.</i> 2019. Mol Metab. 23:24. PubMed Alissafi T, <i>et al.</i> 2018. J Clin Invest. 128:3840. PubMed Jimenez-Duran G, <i>et al.</i> 2020. EBioMedicine. 61:103039. PubMed Kerr SC, <i>et al.</i> 2020. Clin Exp Allergy. 50:904. PubMed Jensen M, <i>et al.</i> 2010. Mult Scler. 16:30. PubMed Sykes DB <i>et al.</i> 2016. Cell. 167(1):171-186. PubMed Kokkinopoulos I, <i>et al.</i> 2021. Sci Rep. 11:15759. PubMed Witkowski M, <i>et al.</i> 2021. Nature. 600:295. PubMed

11. Laustsen A, *et al.* 2021. *Elife*. 10:.. [PubMed](#)
12. Pholcharee T, *et al.* 2021. *Nat Commun*. 12:1063. [PubMed](#)
13. Jama B, Morris G 2014. *J Vis Exp*. 93: 52257. [PubMed](#)
14. Esaulova E, *et al.* 2020. *Cell Host Microbe*. 29(2):165-178.e8. [PubMed](#)
15. Švajger U, *et al.* 2009. *Immunology*. 129:525. [PubMed](#)
16. Hansen IS, *et al.* 2018. *Nat Commun*. 9:863. [PubMed](#)
17. Shen X, *et al.* 2020. *Molecular Cell*. 80(6):1013-1024.e6. [PubMed](#)
18. Domingos-Pereira S, *et al.* 2019. *Cancer Immunol Res*. 7:621. [PubMed](#)
19. Walk J, *et al.* 2019. *Nat Commun*. 10:874. [PubMed](#)
20. BÖiers C, *et al.* 2018. *Dev Cell*. 44:362. [PubMed](#)
21. Feng T, *et al.* 2022. *Nat Commun*. 13:5208. [PubMed](#)
22. Chen IP, *et al.* 2020. *Bio Protoc*. 10:e3854. [PubMed](#)
23. Mandl M, *et al.* 2014. *PLoS One*. 9:112140. [PubMed](#)
24. Mangsbo S, *et al.* 2009. *J Immunol*. 183:6724. [PubMed](#)
25. Warmuth S, *et al.* 2022. *Oncoimmunology*. 10:2004661. [PubMed](#)
26. Wißfeld J, *et al.* 2021. *Glia*. 69:1393. [PubMed](#)
27. Wang F, *et al.* 2021. *Cell*. 184(2):422-440.e17. [PubMed](#)
28. Huang Y, *et al.* 2008. *J Immunol*. 180:2367. [PubMed](#)
29. Huang H, *et al.* 2022. *Nat Commun*. 13:5925. [PubMed](#)
30. Rossignol ED, *et al.* 2021. *Cell Reports*. 35(8):109167. [PubMed](#)
31. Timmerman K, *et al.* 2008. *J Leukoc Biol*. 84:1271. [PubMed](#)
32. Hazenberg MD, *et al.* 2019. *Blood Adv*. 2.659722222. [PubMed](#)
33. Lu J, *et al.* 2021. *Front Immunol*. 12:732612. [PubMed](#)
34. Cizmeci D, *et al.* 2021. *eLife*. 10:00. [PubMed](#)
35. Golebski K, *et al.* 2021. *Immunity*. 54(2):291-307.e7. [PubMed](#)
36. Georgakis S, *et al.* 2021. *JCI Insight*. 6:.. [PubMed](#)
37. Horn LA, *et al.* 2017. *Oncotarget*. 8:57964. [PubMed](#)
38. Kato M, *et al.* 2021. *PLoS One*. 16:e0252116. [PubMed](#)
39. Setliff I, *et al.* 2018. *Cell Host Microbe*. 23:845. [PubMed](#)
40. Bhattacharya S, *et al.* 2022. *J Clin Invest*. Online ahead of print. [PubMed](#)
41. Zhu H, *et al.* 2014. *Lupus*. 23:624. [PubMed](#)
42. Bradley D, *et al.* 2022. *Nat Commun*. 13:5606. [PubMed](#)
43. Bal S, *et al.* 2016. *Nat Immunol*. 10.1038/ni.3444. [PubMed](#)
44. Ramaseri Sunder S, *et al.* 2020. *J Interferon Cytokine Res*. 40:310. [PubMed](#)
45. Matsuyama H, *et al.* 2019. *Sci Rep*. 9:13181. [PubMed](#)
46. Maas RR, *et al.* 2021. *Nat Protoc*. 16:4692. [PubMed](#)
47. Beyer AI, *et al.* 2017. *Stem Cells Dev*. 26:102. [PubMed](#)
48. Bettman N, *et al.* 2015. *Blood Cells Mol Dis*. 55: 180-186. [PubMed](#)
49. Tan EE, *et al.* 2020. *J Clin Invest*. 130:5817. [PubMed](#)
50. Martin GE, *et al.* 2018. *Front Immunol*. 1.019444444. [PubMed](#)
51. An L, *et al.* 2016. *Sci Rep*. 6: 33346. [PubMed](#)
52. Lepore M, *et al.* 2014. *J Exp Med*. 211:1363. [PubMed](#)
53. Bennstein SB, *et al.* 2020. *eLife*. 9:e55232.. [PubMed](#)
54. Deniset JF *et al.* 2019. *Immunity*. 51(1):131-140 . [PubMed](#)
55. Aram J, *et al.* 2020. *Biomedicines*. 8:.. [PubMed](#)

RRID

AB_830676 (BioLegend Cat. No. 325603)
 AB_830677 (BioLegend Cat. No. 325604)

Antigen Details

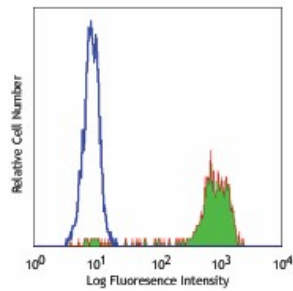
Structure	GPI-linked membrane glycoprotein, 53-55 kD
Distribution	Monocytes, macrophages, granulocytes (low)
Function	LPS receptor, clearance of Gram-negative pathogens
Ligand/Receptor	LPS
Cell Type	Granulocytes, Macrophages, Monocytes, Neutrophils
Biology Area	Cell Biology, Immunology, Innate Immunity, Neuroinflammation, Neuroscience
Molecular Family	CD Molecules
Antigen References	1. Stocks S, <i>et al.</i> 1990. <i>Biochem. J</i> . 268:275. 2. Wright S, <i>et al.</i> 1990. <i>Science</i> 249:1434.
Gene ID	929

Related Protocols

Other Formats

PerCP anti-human CD14, Purified anti-human CD14, FITC anti-human CD14, PE anti-human CD14, APC anti-human CD14, Alexa Fluor® 488 anti-human CD14, Alexa Fluor® 647 anti-human CD14, Alexa Fluor® 700 anti-human CD14, Pacific Blue™ anti-human CD14, PE/Cyanine7 anti-human CD14, APC/Cyanine7 anti-human CD14, PerCP/Cyanine5.5 anti-human CD14, Biotin anti-human CD14, Brilliant Violet 421™ anti-human CD14, Alexa Fluor® 594 anti-human CD14, PE/Dazzle™ 594 anti-human CD14, Spark Blue™ 574 anti-human CD14

Product Data



Human peripheral blood monocytes
stained with HCD14 FITC

For research use only. Not for diagnostic use. Not for resale. BioLegend will not be held responsible for patent infringement or other violations that may occur with the use of our products.

*These products may be covered by one or more Limited Use Label Licenses (see the BioLegend Catalog or our website, www.biolegend.com/ordering#license). BioLegend products may not be transferred to third parties, resold, modified for resale, or used to manufacture commercial products, reverse engineer functionally similar materials, or to provide a service to third parties without written approval of BioLegend. By use of these products you accept the terms and conditions of all applicable Limited Use Label Licenses. Unless otherwise indicated, these products are for research use only and are not intended for human or animal diagnostic, therapeutic or commercial use.

BioLegend Inc., 8999 BioLegend Way, San Diego, CA 92121 www.biolegend.com
Toll-Free Phone: 1-877-Bio-Legend (246-5343) Phone: (858) 768-5800 Fax: (877) 455-9587