

HRP anti-Sortilin Antibody

Catalog# / Size	852103 / 25 µg 852104 / 100 µg
Clone	W16078A
Regulatory Status	RUO
Other Names	100 kD NT receptor
Isotype	Rat IgG2a, κ
Description	Sortilin was originally purified from human brain tissue and was identified as a new lipoprotein receptor, which was later identified as a multifunctional sorting receptor of the VPS10P-domain receptor family. Although Sortilin is predominately expressed in neurons of the central and the peripheral nervous systems, it is also expressed in metabolic tissues including liver. Sortilin functions as a sorting receptor in the Golgi compartment and as a clearance receptor on the cell surface. Sortilin is critical for lipid metabolism, and it has been implicated in lipid disorders. Sortilin is also an APOE receptor implicated in Alzheimer disease.

Product Details

Verified Reactivity	Human, Rat
Antibody Type	Monoclonal
Host Species	Rat
Immunogen	Human SORT1 recombinant protein (327-638 a.a.) expressed in <i>E. coli</i> .
Formulation	This antibody is provided in 50% glycerol in aqueous buffered solutions with preservatives.
Preparation	The antibody was purified by affinity chromatography and conjugated with HRP under optimal conditions.
Concentration	0.5 mg/ml
Storage & Handling	Upon receipt, the antibody solution should be stored undiluted at -20°C, and protected from prolonged exposure to light.
Application	WB - Quality tested IHC-P - Verified
Recommended Usage	Each lot of this antibody is quality control tested by Western blotting . For Western blotting, the suggested use of this reagent is 0.2 - 0.5 µg per ml. For immunohistochemistry, a concentration range of 0.5 - 2 µg/ml is suggested. It is recommended that the reagent be titrated for optimal performance for each application.
RRID	AB_2801199 (BioLegend Cat. No. 852103) AB_2801200 (BioLegend Cat. No. 852104)

Antigen Details

Structure	Sortilin is an 831 amino acid protein with a molecular mass of 95 kD.
Distribution	Tissue distribution: Sortilin is expressed in numerous tissues including brain, spinal cord, heart, skeletal muscle, thyroid, placenta, and testis. Cellular distribution: Plasma membrane, cytosol, endosome, endoplasmic reticulum, lysosome, and golgi apparatus.
Function	Sortilin functions as a cell surface receptor and mediates intracellular trafficking of diverse endogenous or exogenous protein substrates between the trans-Golgi network and plasma membrane compartments.

Interaction	Sortilin interacts with p75 Neurotrophin Receptor and is localized together with the golgi marker GM130 and the early endosome marker EEA1.
Ligand/Receptor	Sortilin functions as lipoprotein receptor for neurotrophins and other growth factors.
Biology Area	Cell Biology, Neurodegeneration, Neuroscience, Neuroscience Cell Markers, Protein Trafficking and Clearance, Transcription Factors
Molecular Family	Golgi Markers
Antigen References	<ol style="list-style-type: none"> 1. Skeldal S, et al. 2012. J. Biol. Chem. 287:43798-809. 2. Herda S, et al. 2012. Immunity. 37:854-66. 3. Gao A, et al. 2017. DNA Cell Biol. 36:1050-1061. 4. Carlo AS. 2013. Prion. 7:378-82.
Gene ID	6272

Related Protocols

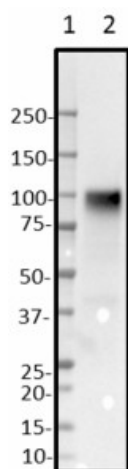
[Western Blotting Protocol](#)

[Immunohistochemistry Protocol for Paraffin-Embedded Sections](#)

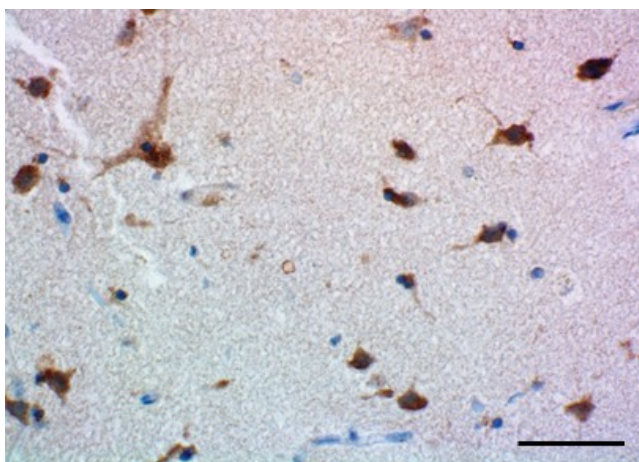
Other Formats

Purified anti-Sortilin, HRP anti-Sortilin

Product Data



Western blot of HRP anti-Sortilin antibody (clone A16078A). Lane 1: Molecular weight marker; Lane 2: 20 µg of human brain lysate. The blot was incubated with 0.2 µg/ml of the primary antibody for 1 hour at room temperature. Enhanced chemiluminescence was used as the detection system.



IHC staining of HRP anti-Sortilin antibody (clone A16078A) on formalin-fixed paraffin-embedded human brain tissue. Following antigen retrieval using Sodium Citrate H.I.E.R., the tissue was incubated with 2 µg/ml of the primary antibody overnight at 4°C. Hematoxylin was used for counterstaining, according to the protocol provided. The image was captured with a 40X objective. Scale bar: 50 µm

For research use only. Not for diagnostic use. Not for resale. BioLegend will not be held responsible for patent infringement or other violations that may occur with the use of our products.

*These products may be covered by one or more Limited Use Label Licenses (see the BioLegend Catalog or our website, www.biolegend.com/ordering#license). BioLegend products may not be transferred to third parties, resold, modified for resale, or used to manufacture commercial products, reverse engineer functionally similar materials, or to provide a service to third parties without written approval of BioLegend. By use of these products you accept the terms and conditions of all applicable Limited Use Label Licenses. Unless otherwise indicated, these products are for research use only and are not intended for human or animal diagnostic, therapeutic or commercial use.

BioLegend Inc., 8999 BioLegend Way, San Diego, CA 92121 www.biolegend.com
Toll-Free Phone: 1-877-Bio-Legend (246-5343) Phone: (858) 768-5800 Fax: (877) 455-9587