

KIRAVIA Blue 520™ anti-mouse CD25 Antibody

Catalog# / Size	102063 / 25 µg 102064 / 100 µg
Clone	PC61
Regulatory Status	RUO
Other Names	IL-2Rα, Ly-43, p55, Tac
Isotype	Rat IgG1, λ
Description	CD25 is a 55 kD glycoprotein also known as the low affinity IL-2Rα, Ly-43, p55, or Tac. It is expressed on activated T and B cells, thymocyte subsets, pre-B cells, and T regulatory cells. In association with CD122 (IL-2Rβ) and CD132 (common γ chain), CD25 forms the high affinity signaling IL-2 receptor.

Product Details

Verified Reactivity	Mouse
Antibody Type	Monoclonal
Host Species	Rat
Immunogen	IL-2-dependent cytolytic mouse T-cell clone B6.1
Formulation	Phosphate-buffered solution, pH 7.2, containing 0.09% sodium azide
Preparation	The antibody was purified by affinity chromatography and conjugated with KIRAVIA Blue 520™ under optimal conditions.
Concentration	0.2 mg/mL
Storage & Handling	The antibody solution should be stored undiluted between 2°C and 8°C, and protected from prolonged exposure to light. Do not freeze.
Application	FC - Quality tested
Recommended Usage	<p>Each lot of this antibody is quality control tested by immunofluorescent staining with flow cytometric analysis. For flow cytometric staining, the suggested use of this reagent is ≤ 0.25 µg per million cells in 100 µL volume. It is recommended that the reagent be titrated for optimal performance for each application.</p> <p>* KIRAVIA Blue 520™ has an excitation maximum of 495 nm, and a maximum emission of 520 nm.</p> <p>KIRAVIA Blue™ 520 is a trademark of Sony. This product is subject to proprietary rights of Sony and is made and sold under license from Sony Corporation. This product is covered by U.S. Patent(s), pending patent applications and foreign equivalents.</p> <p>Sony and the Sony logo are registered trademarks of Sony Corporation.</p>
Excitation Laser	Blue Laser (488 nm)
Application Notes	<p>Additional reported applications (for the relevant formats) include: immunoprecipitation^{1,2}, <i>in vitro</i> blocking of IL-2 binding to low- and high-affinity receptors¹⁻⁴, growth inhibition of IL-2-dependent T-cell lines¹⁻⁴, <i>in vivo</i> depletion of CD25⁺CD4⁺ Treg cells^{5-8,10}, and immunohistochemical staining of acetone-fixed frozen sections². PC61 antibody recognizes a different epitope than 3C7 antibody (Cat. No. 101902). For <i>in vivo</i> studies or highly sensitive assays, we recommend Ultra-LEAF™ purified antibody (Cat. No. 102040) with endotoxin < 0.01 EU/µg, Azide-Free, 0.2 µm filtered.</p>
Application References	<ol style="list-style-type: none"> Lowenthal JW, <i>et al.</i> 1985. <i>Nature</i> 315:669. (IP, Block) Ceredig R, <i>et al.</i> 1985. <i>Nature</i> 314:98. (IP, IHC, Block) Lowenthal JW, <i>et al.</i> 1985. <i>J. Immunol.</i> 135:3988. (Block) Moreau JL, <i>et al.</i> 1987. <i>Eur. J. Immunol.</i> 17:929. (Block) Takahashi T, <i>et al.</i> 2000. <i>J. Exp. Med.</i> 192:303. (Deplete)
(PubMed link indicates BioLegend citation)	

6. Onizuka S, *et al.* 1999. *Cancer Res.* 59:3128. (Deplete)
7. Lei TC, *et al.* 2005. *Blood* 105:4865. (Deplete)
8. Pasare C, *et al.* 2004. *Immunity* 21:733. (Deplete)
9. León-Ponte M, *et al.* 2007. *Blood* 109:3139.
10. Cao OW, *et al.* 2007. *Blood* doi:10.1182/blood-2007-02-073304. (Deplete)
11. Benson MJ, *et al.* 2007. *J. Exp. Med.* doi:10.1084/jem.20070719.
12. Liu F, *et al.* 2011. *Arch Toxicol.* 85:1383. [PubMed](#)
13. Anguela XM, *et al.* 2013. *Diabetes.* 62:551. [PubMed](#)

RRID AB_2832285 (BioLegend Cat. No. 102063)
 AB_2832286 (BioLegend Cat. No. 102064)

Antigen Details

Structure	Forms high affinity IL-2R with IL-2R β (CD122) and IL-2R γ (CD132), 55 kD
Distribution	Activated T cells and B cells, thymocyte subset, pre-B cells, T regulatory cells
Function	IL-2 receptor
Ligand/Receptor	IL-2
Cell Type	B cells, T cells, Thymocytes, Tregs
Biology Area	Immunology
Molecular Family	CD Molecules, Cytokine/Chemokine Receptors
Antigen References	<ol style="list-style-type: none"> 1. Taniguchi T, <i>et al.</i> 1993. <i>Cell</i> 73:5-8. 2. Waldmann TA. 1991. <i>J Biol Chem.</i> 266:2681-4. 3. Read S, <i>et al.</i> 2000. <i>J Exp Med.</i> 192:295-302. 4. Lowenthal JW, <i>et al.</i> 1985. <i>J Immunol.</i> 135:3988-94.

Gene ID [16184](#)

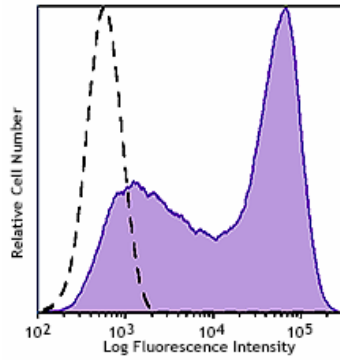
Related Protocols

[Cell Surface Flow Cytometry Staining Protocol](#)

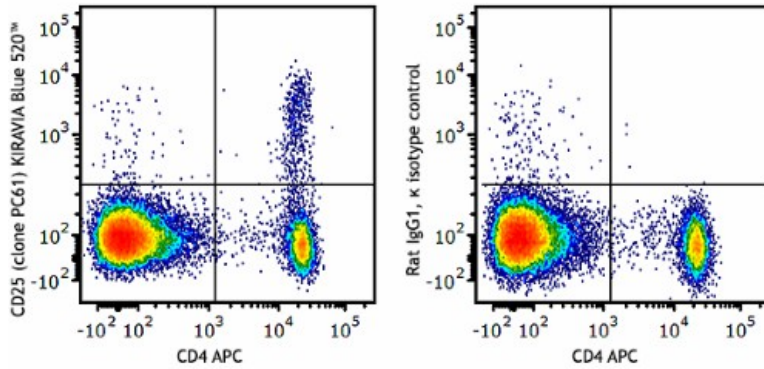
Other Formats

APC anti-mouse CD25, Biotin anti-mouse CD25, FITC anti-mouse CD25, PE anti-mouse CD25, PE/Cyanine5 anti-mouse CD25, Purified anti-mouse CD25, PE/Cyanine7 anti-mouse CD25, Alexa Fluor® 488 anti-mouse CD25, Alexa Fluor® 647 anti-mouse CD25, Pacific Blue™ anti-mouse CD25, Alexa Fluor® 700 anti-mouse CD25, APC/Cyanine7 anti-mouse CD25, PerCP/Cyanine5.5 anti-mouse CD25, PerCP anti-mouse CD25, Brilliant Violet 421™ anti-mouse CD25, Brilliant Violet 605™ anti-mouse CD25, Brilliant Violet 650™ anti-mouse CD25, Ultra-LEAF™ Purified anti-mouse CD25, Brilliant Violet 510™ anti-mouse CD25, PE/Dazzle™ 594 anti-mouse CD25, Brilliant Violet 711™ anti-mouse CD25, Brilliant Violet 785™ anti-mouse CD25, Alexa Fluor® 594 anti-mouse CD25, APC/Fire™ 750 anti-mouse CD25, TotalSeq™-A0097 anti-mouse CD25, KIRAVIA Blue 520™ anti-mouse CD25, TotalSeq™-B0097 anti-mouse CD25, TotalSeq™-C0097 anti-mouse CD25, Spark NIR™ 685 anti-mouse CD25 Antibody, PE/Fire™ 640 anti-mouse CD25, Spark YG™ 581 anti-mouse CD25, APC/Fire™ 810 anti-mouse CD25

Product Data



Con A-stimulated (3 days) C57BL/6 mouse splenocytes were stained with CD25 (clone PC61) KIRAVIA Blue 520™ (filled histogram). Unstained control cells are represented by the open histogram.



C57BL/6 mouse splenocytes were stained with CD4 APC and CD25 (clone PC61) KIRAVIA Blue 520™ (left) or rat IgG1, κ KIRAVIA Blue 520™ isotype control (right).

For research use only. Not for diagnostic use. Not for resale. BioLegend will not be held responsible for patent infringement or other violations that may occur with the use of our products.

*These products may be covered by one or more Limited Use Label Licenses (see the BioLegend Catalog or our website, www.biolegend.com/ordering#license). BioLegend products may not be transferred to third parties, resold, modified for resale, or used to manufacture commercial products, reverse engineer functionally similar materials, or to provide a service to third parties without written approval of BioLegend. By use of these products you accept the terms and conditions of all applicable Limited Use Label Licenses. Unless otherwise indicated, these products are for research use only and are not intended for human or animal diagnostic, therapeutic or commercial use.

BioLegend Inc., 8999 BioLegend Way, San Diego, CA 92121 www.biolegend.com
Toll-Free Phone: 1-877-Bio-Legend (246-5343) Phone: (858) 768-5800 Fax: (877) 455-9587