

## LEGENDplex™ Mouse EPO Capture Bead B7, 13X

<b>Catalog# / Size</b>	740695 / 100 tests (270 µL)
<b>Regulatory Status</b>	RUO
<b>Other Names</b>	HSC, Erythropoietin
<b>Description</b>	<p>These Mouse EPO Capture Beads are suitable for use with the following Mix and Match reagents:</p> <p><u>Mouse HSC Panel</u> 740685 (LEGENDplex™ Mouse HSC Panel Detection Antibodies) 740684 (LEGENDplex™ Mouse HSC Panel Standard) 741206 (LEGENDplex™ Buffer Set H1)</p> <p>For product manuals for these panels, please visit the Mix and Match tab on the <a href="#">LEGENDplex™</a> page.</p>

### Product Details

---

<b>Verified Reactivity</b>	Mouse
<b>Application</b>	<a href="#">Multiplex</a>

Learn more about LEGENDplex™ at [biolegend.com/legendplex](http://biolegend.com/legendplex)

Download the [LEGENDplex™ software here](#).

### Antigen Details

---

<b>Biology Area</b>	Cell Biology, Signal Transduction
<b>Molecular Family</b>	Cytokines/Chemokines, Growth Factors
<b>Gene ID</b>	<a href="#">13856</a>

### Related Protocols

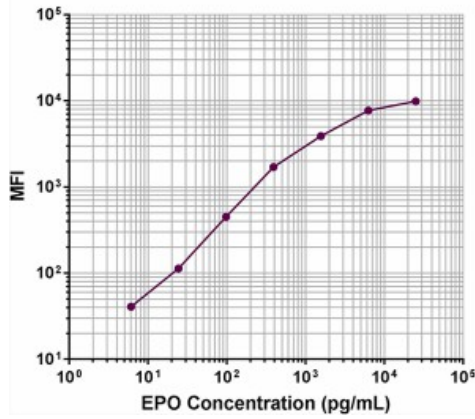
---

[LEGENDplex™ Laboratory Protocol - Video](#)

### Product Data

---

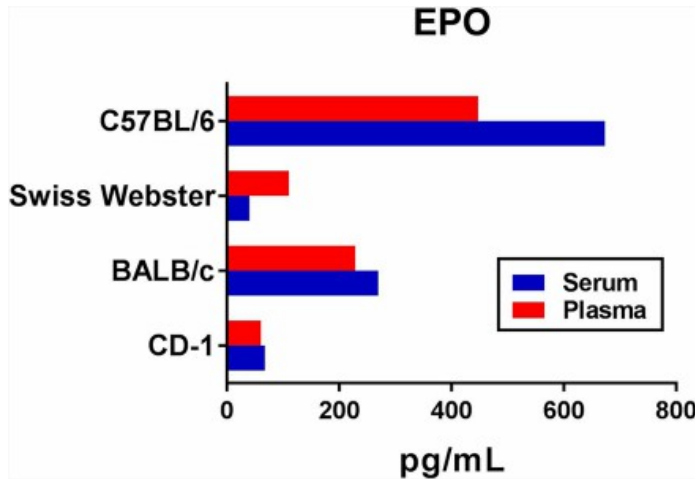
**LEGENDplex™ Mouse EPO Capture Bead B7  
Representative Standard Curve**



Data generated using the following LEGENDplex™ Mix & Match Reagents:

- Mouse EPO Capture Bead B7, 13X (Cat. # 740695)
- Mouse HSC Panel Detection Antibodies (Cat. # 740685)
- Mouse HSC Panel Standard (Cat. # 740684)
- Buffer Set H (Cat. # 740620)

**Note: Data acquired on a BD FACSCalibur™ flow cytometer.**



Serum and plasma samples of the following mouse strains were pooled from a minimum of ten mice each, and tested for the endogenous levels of the proteins using the LEGENDplex™ Mouse HSC Panel.

For research use only. Not for diagnostic use. Not for resale. BioLegend will not be held responsible for patent infringement or other violations that may occur with the use of our products.

\*These products may be covered by one or more Limited Use Label Licenses (see the BioLegend Catalog or our website, [www.biolegend.com/ordering#license](http://www.biolegend.com/ordering#license)). BioLegend products may not be transferred to third parties, resold, modified for resale, or used to manufacture commercial products, reverse engineer functionally similar materials, or to provide a service to third parties without written approval of BioLegend. By use of these products you accept the terms and conditions of all applicable Limited Use Label Licenses. Unless otherwise indicated, these products are for research use only and are not intended for human or animal diagnostic, therapeutic or commercial use.

BioLegend Inc., 8999 BioLegend Way, San Diego, CA 92121 [www.biolegend.com](http://www.biolegend.com)  
Toll-Free Phone: 1-877-Bio-Legend (246-5343) Phone: (858) 768-5800 Fax: (877) 455-9587