

## Pacific Blue™ anti-human CD19 Antibody

<b>Catalog# / Size</b>	363035 / 25 tests 363036 / 100 tests
<b>Clone</b>	SJ25C1
<b>Regulatory Status</b>	RUO
<b>Other Names</b>	CD19 Molecule, CD19 Antigen, Differentiation Antigen CD19, B-Lymphocytes Surface Antigen B4, T-cell Surface Antigen Leu-12, CVID3, B4, B-lymphocyte Antigen CD19
<b>Isotype</b>	Mouse IgG1, κ
<b>Description</b>	CD19 is a 95 kD type I transmembrane glycoprotein also known as B4. It is a member of the immunoglobulin superfamily expressed on B cells (from pro-B to blastoid B cells, absent on plasma cells) and follicular dendritic cells. CD19 is involved in B cell development, activation, and differentiation. CD19 forms a complex with CD21 (CR2) and CD81 (TAPA-1), and functions as a BCR co-receptor.

### Product Details

---

<b>Verified Reactivity</b>	Human
<b>Antibody Type</b>	Monoclonal
<b>Host Species</b>	Mouse
<b>Immunogen</b>	NALM1 + NALM16 cells
<b>Formulation</b>	Phosphate-buffered solution, pH 7.2, containing 0.09% sodium azide and BSA (origin USA)
<b>Preparation</b>	The antibody was purified by affinity chromatography and conjugated with Pacific Blue™ under optimal conditions.
<b>Concentration</b>	Lot-specific (to obtain lot-specific concentration, please enter the lot number in our <a href="#">Concentration and Expiration Lookup</a> or <a href="#">Certificate of Analysis</a> online tools.)
<b>Storage &amp; Handling</b>	The antibody solution should be stored undiluted between 2°C and 8°C, and protected from prolonged exposure to light. <b>Do not freeze.</b>
<b>Application</b>	<a href="#">FC - Quality tested</a>
<b>Recommended Usage</b>	<p>Each lot of this antibody is quality control tested by <a href="#">immunofluorescent staining with flow cytometric analysis</a>. For flow cytometric staining, the suggested use of this reagent is 5 µl per million cells in 100 µl staining volume or 5 µl per 100 µl of whole blood.</p> <p>* Pacific Blue™ has a maximum emission of 455 nm when it is excited at 405 nm. Prior to using Pacific Blue™ conjugate for flow cytometric analysis, please verify your flow cytometer's capability of exciting and detecting the fluorochrome.</p> <p>Alexa Fluor® and Pacific Blue™ are trademarks of Life Technologies Corporation.</p> <p><a href="#">View full statement regarding label licenses</a></p>
<b>Excitation Laser</b>	Violet Laser (405 nm)
<b>Application Notes</b>	Clone SJ25C1 partially blocks anti-human CD19 clones HIB19 and 4G7 staining based on in-house testing
<b>Product Citations</b>	1. Ferguson ID, <i>et al.</i> 2022. Nat Commun. 13:4121. <a href="#">PubMed</a>
<b>RRID</b>	AB_2632786 (BioLegend Cat. No. 363035) AB_2632787 (BioLegend Cat. No. 363036)

## Antigen Details

<b>Structure</b>	Ig superfamily, type I transmembrane glycoprotein, 95 kD.
<b>Distribution</b>	B lineage (except plasma cells), follicular dendritic cells.
<b>Function</b>	B cell activation and differentiation.
<b>Interaction</b>	Forms a complex with CD21, CD81 and CD225 in the membrane of mature B cells and interacts with VAV and LYN. It also interacts with GRAB2 and SOS when phosphorylated on Tyr-348 and/or Tyr-378 and with PLCG2 when phosphorylated on Tyr-409.
<b>Ligand/Receptor</b>	Forms complex with CD21 (CR2) and CD81 (TAPA-1), BCR co-receptor.
<b>Cell Type</b>	B cells, Dendritic cells
<b>Biology Area</b>	Costimulatory Molecules, Immunology
<b>Molecular Family</b>	CD Molecules
<b>Antigen References</b>	1. Tedder T, <i>et al.</i> 1994. <i>Immunol. Today</i> 15:437. 2. Bradbury L, <i>et al.</i> 1993. <i>J. Immunol.</i> 151:2915.
<b>Gene ID</b>	<a href="#">930</a>

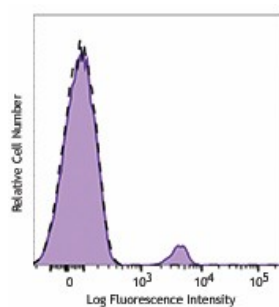
## Related Protocols

[Cell Surface Flow Cytometry Staining Protocol](#)

## Other Formats

Brilliant Violet 421™ anti-human CD19, Purified anti-human CD19, PE anti-human CD19, APC anti-human CD19, FITC anti-human CD19, APC/Cyanine7 anti-human CD19, PE/Cyanine7 anti-human CD19, PerCP anti-human CD19, PerCP/Cyanine5.5 anti-human CD19, Brilliant Violet 510™ anti-human CD19, Brilliant Violet 711™ anti-human CD19, Brilliant Violet 605™ anti-human CD19, Brilliant Violet 650™ anti-human CD19, Brilliant Violet 785™ anti-human CD19, APC/Fire™ 750 anti-human CD19, PE/Dazzle™ 594 anti-human CD19, Alexa Fluor® 700 anti-human CD19, Pacific Blue™ anti-human CD19, Alexa Fluor® 488 anti-human CD19, Alexa Fluor® 647 anti-human CD19, PE/Cyanine5 anti-human CD19

## Product Data



Human peripheral blood lymphocytes were stained with CD19 (clone SJ25C1) Pacific Blue™ (filled histogram) or mouse IgG1, κ Pacific Blue™ isotype control (open histogram).

For research use only. Not for diagnostic use. Not for resale. BioLegend will not be held responsible for patent infringement or other violations that may occur with the use of our products.

\*These products may be covered by one or more Limited Use Label Licenses (see the BioLegend Catalog or our website, [www.biolegend.com/ordering#license](http://www.biolegend.com/ordering#license)). BioLegend products may not be transferred to third parties, resold, modified for resale, or used to manufacture commercial products, reverse engineer functionally similar materials, or to provide a service to third parties without written approval of BioLegend. By use of these products you accept the terms and conditions of all applicable Limited Use Label Licenses. Unless otherwise indicated, these products are for research use only and are not intended for human or animal diagnostic, therapeutic or commercial use.

BioLegend Inc., 8999 BioLegend Way, San Diego, CA 92121 [www.biolegend.com](http://www.biolegend.com)  
Toll-Free Phone: 1-877-Bio-Legend (246-5343) Phone: (858) 768-5800 Fax: (877) 455-9587

