

Pacific Blue™ anti-human CD2 Antibody

Catalog# / Size	309216 / 100 µg
Clone	TS1/8
Regulatory Status	RUO
Workshop	V S025
Other Names	LFA-2, T11, SRBC-R
Isotype	Mouse IgG1, κ
Description	CD2 is a 50 kD type I transmembrane glycoprotein also known as LFA-2, T11, and sheep red blood cell receptor (SRBC-R). This immunoglobulin superfamily member is expressed on thymocytes, T lymphocytes, NK cells, and thymic B cell subsets. The major ligand for CD2 is CD58 (also known as LFA-3). CD2 has also been reported to bind CD48, CD59, and CD15. CD2 plays a critical role in alternative T cell activation, T cell signaling, and cell-cell adhesion.

Product Details

Verified Reactivity	Human
Antibody Type	Monoclonal
Host Species	Mouse
Formulation	Phosphate-buffered solution, pH 7.2, containing 0.09% sodium azide.
Preparation	The antibody was purified by affinity chromatography, and conjugated with Pacific Blue™ under optimal conditions.
Concentration	0.5 mg/ml
Storage & Handling	The antibody solution should be stored undiluted between 2°C and 8°C, and protected from prolonged exposure to light. Do not freeze.
Application	FC - Quality tested
Recommended Usage	<p>Each lot of this antibody is quality control tested by immunofluorescent staining with flow cytometric analysis. The suggested use of this reagent is ≤ 1.0 µg per 10⁶ cells in 100 µl volume or 100 µl of whole blood. It is highly recommended that the reagent be titrated for optimal performance for each application.</p> <p>* Pacific Blue™ has a maximum emission of 455 nm when it is excited at 405 nm. Prior to using Pacific Blue™ conjugate for flow cytometric analysis, please verify your flow cytometer's capability of exciting and detecting the fluorochrome.</p> <p>Alexa Fluor® and Pacific Blue™ are trademarks of Life Technologies Corporation.</p> <p>View full statement regarding label licenses</p>
Excitation Laser	Violet Laser (405 nm)
Application Notes	Additional reported applications (for the relevant formats) include: blocking of T cell activation, and partial blocking of B cell costimulation ² . The Ultra-LEAF™ purified antibody (Endotoxin < 0.01 EU/µg, Azide-Free, 0.2 µm filtered) is recommended for functional assays (Cat. Nos. 309235 & 309236).
Application References (PubMed link indicates BioLegend citation)	<ol style="list-style-type: none"> Schlossman S, et al. Eds. 1995. Leucocyte Typing V Oxford University Press. New York. Hughes CCW, et al. 1996. <i>J. Biol. Chem.</i> 271:5369.
Product Citations	<ol style="list-style-type: none"> Picot T, et al. 2018. <i>Front Oncol.</i> 8:109. PubMed Romee R, et al. 2013. <i>Blood.</i> 121:3599. PubMed

Antigen Details

Structure	Ig superfamily, type I transmembrane glycoprotein, 50 kD
Distribution	T cells, NK cells, thymocytes, and thymic B cell subsets
Function	T cell activation, adhesion
Ligand/Receptor	CD58 (LFA-3), CD48, CD59, CD15
Cell Type	B cells, NK cells, T cells, Thymocytes
Biology Area	Costimulatory Molecules, Immunology
Molecular Family	CD Molecules
Antigen References	1. Bell G, <i>et al.</i> 1995. <i>J. Immunol.</i> 155:2805. 2. Bierer B, <i>et al.</i> 1989. <i>Annu. Rev. Immunol.</i> 7:579. 3. Moingeon P, <i>et al.</i> 1989. <i>Immunol. Rev.</i> 111:111.
Gene ID	914

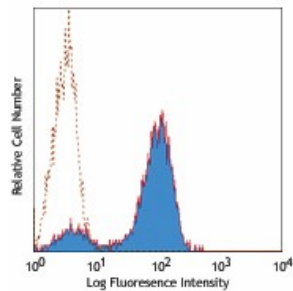
Related Protocols

[Cell Surface Flow Cytometry Staining Protocol](#)

Other Formats

FITC anti-human CD2, PE anti-human CD2, Purified anti-human CD2, Pacific Blue™ anti-human CD2, PE/Cyanine7 anti-human CD2, Brilliant Violet 421™ anti-human CD2, Purified anti-human CD2 (Maxpar® Ready), PerCP/Cyanine5.5 anti-human CD2, APC anti-human CD2, APC/Fire™ 750 anti-human CD2, Alexa Fluor® 700 anti-human CD2, TotalSeq™-A0367 anti-human CD2, TotalSeq™-C0367 anti-human CD2, TotalSeq™-B0367 anti-human CD2, Ultra-LEAF™ Purified anti-human CD2, APC/Cyanine7 anti-human CD2, TotalSeq™-D0367 anti-human CD2, GMP PE anti-human CD2

Product Data



Human peripheral blood lymphocytes stained with TS1/8 Pacific Blue™

For research use only. Not for diagnostic use. Not for resale. BioLegend will not be held responsible for patent infringement or other violations that may occur with the use of our products.

*These products may be covered by one or more Limited Use Label Licenses (see the BioLegend Catalog or our website, www.biolegend.com/ordering#license). BioLegend products may not be transferred to third parties, resold, modified for resale, or used to manufacture commercial products, reverse engineer functionally similar materials, or to provide a service to third parties without written approval of BioLegend. By use of these products you accept the terms and conditions of all applicable Limited Use Label Licenses. Unless otherwise indicated, these products are for research use only and are not intended for human or animal diagnostic, therapeutic or commercial use.

BioLegend Inc., 8999 BioLegend Way, San Diego, CA 92121 www.biolegend.com
Toll-Free Phone: 1-877-Bio-Legend (246-5343) Phone: (858) 768-5800 Fax: (877) 455-9587

