

Pacific Blue™ anti-human IL-1β Antibody

Catalog# / Size	511709 / 25 µg 511710 / 100 µg
Clone	H1b-98
Regulatory Status	RUO
Other Names	Interleukin-1β, H1, OAF, Catabolin, IFN γ -inducing factor(il-1b,il1b)
Isotype	Mouse IgG2b, κ
Description	IL-1 refers to two proteins, IL-1 α and IL-1 β which are the products of distinct genes, but which are recognized by the same cell surface receptors. IL-1 β is a potent immuno-modulator which mediates a wide range of immune and inflammatory responses including the activation of B and T cells.

Product Details

Verified Reactivity	Human
Antibody Type	Monoclonal
Host Species	Mouse
Formulation	Phosphate-buffered solution, pH 7.2, containing 0.09% sodium azide.
Preparation	The antibody was purified by affinity chromatography, and conjugated with Pacific Blue™ under optimal conditions.
Concentration	0.5 mg/mL
Storage & Handling	The antibody solution should be stored undiluted between 2°C and 8°C, and protected from prolonged exposure to light. Do not freeze.
Application	ICFC - Quality tested
Recommended Usage	<p>Each lot of this antibody is quality control tested by intracellular immunofluorescent staining with flow cytometric analysis. For flow cytometric staining, the suggested use of this reagent is ≤ 2.0 µg per 10^6 cells in 100 µL volume. It is highly recommended that the reagent be titrated for optimal performance for each application.</p> <p>* Pacific Blue™ has a maximum emission of 455 nm when it is excited at 405 nm. Prior to using Pacific Blue™ conjugate for flow cytometric analysis, please verify your flow cytometer's capability of exciting and detecting the fluorochrome.</p> <p>Alexa Fluor® and Pacific Blue™ are trademarks of Life Technologies Corporation.</p> <p>View full statement regarding label licenses</p>
Excitation Laser	Violet Laser (405 nm)
Product Citations	<ol style="list-style-type: none">1. Kreutmair S, <i>et al.</i> 2021. Immunity. . PubMed2. Shirai T, <i>et al.</i> 2016. J Exp Med. 213: 337 - 354. PubMed3. Wimmers F, <i>et al.</i> 2021. Cell. 184:3915. PubMed4. Kuranda K, <i>et al.</i> 2018. J Clin Invest. 128:5267. PubMed
RRID	AB_2124351 (BioLegend Cat. No. 511709) AB_2124350 (BioLegend Cat. No. 511710)

Antigen Details

Structure	Cytokine; 17.3 kD (Mammalian)
Bioactivity	Stimulates T cells, B cells, proliferation/activation of NK cells, fibroblasts, thymocytes, glioblastoma cells, astroglia, microglia
Cell Sources	Monocytes, tissue macrophages, Langerhans cells, dendritic cells, T and B cells, natural killer (NK) cells, large granular lymphocytes (LGL), vascular endothelium, smooth muscle, fibroblasts, thymic epithelia, astrocytes, microglia, glioma, keratinocytes,
Cell Targets	B cells, T cells, monocytes
Receptors	Type I IL-1R (CDw121a), Type II IL-1R (CDw121b)
Biology Area	Cell Biology, Immunology, Innate Immunity, Neuroinflammation, Neuroscience
Molecular Family	Cytokines/Chemokines
Antigen References	<ol style="list-style-type: none"> 1. Fitzgerald K, <i>et al.</i> Eds. 2001. <i>The Cytokine FactsBook</i>. Academic Press San Diego. 2. Bomford R, <i>et al.</i> Eds. 1989. <i>Interleukin-1 inflammation and disease</i>. Elsevier New York. 3. Brazel D, <i>et al.</i> 1991. <i>Biotechnol. Ther.</i> 2:241. 4. Dinarello C. 1996. <i>Blood</i> 87:2095.
Regulation	Upregulated by TNF- α , IFN- α , IFN- β , IFN- γ , bacterial endotoxins, viruses, mitogens, antigens; downregulated by IL-6, lipoproteins, lipids, and α_2 -macroglobulin
Gene ID	3553

Related Protocols

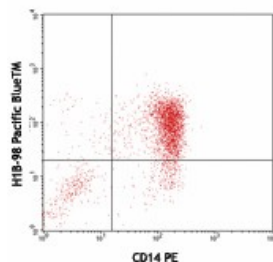
[Surface and Intracellular Cytokine Staining for Flow Cytometry - Video](#)

[Intracellular Flow Cytometry Staining Protocol](#)

Other Formats

Biotin anti-human IL-1 β , FITC anti-human IL-1 β , Alexa Fluor® 647 anti-human IL-1 β , Pacific Blue™ anti-human IL-1 β

Product Data



LPS-stimulated (6 hours) human peripheral blood monocytes stained with CD14 PE and intracellular stained with H1b-98 Pacific Blue™

For research use only. Not for diagnostic use. Not for resale. BioLegend will not be held responsible for patent infringement or other violations that may occur with the use of our products.

*These products may be covered by one or more Limited Use Label Licenses (see the BioLegend Catalog or our website, www.biolegend.com/ordering#license). BioLegend products may not be transferred to third parties, resold, modified for resale, or used to manufacture commercial products, reverse engineer functionally similar materials, or to provide a service to third parties without written approval of BioLegend. By use of these products you accept the terms and conditions of all applicable Limited Use Label Licenses. Unless otherwise indicated, these products are for research use only and are not intended for human or animal diagnostic, therapeutic or commercial use.

BioLegend Inc., 8999 BioLegend Way, San Diego, CA 92121 www.biolegend.com
Toll-Free Phone: 1-877-Bio-Legend (246-5343) Phone: (858) 768-5800 Fax: (877) 455-9587