

## Pacific Blue™ anti-IRF4 Antibody

<b>Catalog# / Size</b>	646417 / 25 µg 646418 / 100 µg
<b>Clone</b>	IRF4.3E4
<b>Regulatory Status</b>	RUO
<b>Other Names</b>	Interferon regulatory factor 4
<b>Isotype</b>	Rat IgG1, κ
<b>Description</b>	The IRF family consists of at least nine members. IRF4 and IRF8 are highly homologous to each other and also redundant in function. IRF4 is critical for Th2 and Th17 development. Together with TRF8, it plays an essential role in macrophage and dendritic cell development and function. IRF4 is also reported to be essential for pre-B cell development, receptor editing, germinal center reactor and plasma cell differentiation.

### Product Details

---

<b>Verified Reactivity</b>	Mouse, Human
<b>Antibody Type</b>	Monoclonal
<b>Host Species</b>	Rat
<b>Immunogen</b>	GST fusion protein containing C-terminal of murine IRF4
<b>Formulation</b>	Phosphate-buffered solution, pH 7.2, containing 0.09% sodium azide.
<b>Preparation</b>	The antibody was purified by affinity chromatography and conjugated with Pacific Blue™ under optimal conditions.
<b>Concentration</b>	0.5 mg/ml
<b>Storage &amp; Handling</b>	The antibody solution should be stored undiluted between 2°C and 8°C, and protected from prolonged exposure to light. <b>Do not freeze.</b>
<b>Application</b>	<a href="#">ICFC - Quality tested</a>
<b>Recommended Usage</b>	Each lot of this antibody is quality control tested by intracellular flow cytometry using our <a href="#">True-Nuclear™ Transcription Factor Staining Protocol</a> . For flow cytometric staining, the suggested use of this reagent is ≤0.25 µg per million cells in 100 µl volume. It is recommended that the reagent be titrated for optimal performance for each application.  * Pacific Blue™ has a maximum emission of 455 nm when it is excited at 405 nm. Prior to using Pacific Blue™ conjugate for flow cytometric analysis, please verify your flow cytometer's capability of exciting and detecting the fluorochrome.  Alexa Fluor® and Pacific Blue™ are trademarks of Life Technologies Corporation.  <a href="#">View full statement regarding label licenses</a>
<b>Excitation Laser</b>	Violet Laser (405 nm)
<b>Application Notes</b>	Additional reported applications (for the relevant formats) include: spatial biology (IBEX) <sup>3,4</sup> .
<b>Application References</b>	1. Zheng Y, <i>et al.</i> 2009. <i>Nature</i> 458:351 2. Yin SY, <i>et al.</i> 2011. <i>Exp Cell Res.</i> 317:2210. <a href="#">PubMed</a> 3. Radtke AJ, <i>et al.</i> 2020. <i>Proc Natl Acad Sci USA.</i> 117:33455-33465. (SB) <a href="#">PubMed</a> 4. Radtke AJ, <i>et al.</i> 2022. <i>Nat Protoc.</i> 17:378-401. (SB) <a href="#">PubMed</a>
<b>(PubMed link indicates BioLegend citation)</b>	
<b>RRID</b>	AB_2814496 (BioLegend Cat. No. 646417) AB_2814497 (BioLegend Cat. No. 646418)

## Antigen Details

---

<b>Structure</b>	Molecular weight is approximately 51 kD.
<b>Distribution</b>	IRF4 is reported to be expressed exclusively in the immune system.
<b>Biology Area</b>	Cell Biology, Transcription Factors
<b>Molecular Family</b>	Nuclear Markers
<b>Antigen References</b>	1. Lu R. 2008. <i>Trends Immunol</i> 29:487.
<b>Gene ID</b>	<a href="#">3662</a>

## Related Protocols

---

[True-Nuclear™ Transcription Factor Staining Protocol for 96-Well U Bottom Plate](#)

[True-Nuclear™ Transcription Factor Staining Protocol for 5mL Tubes](#)

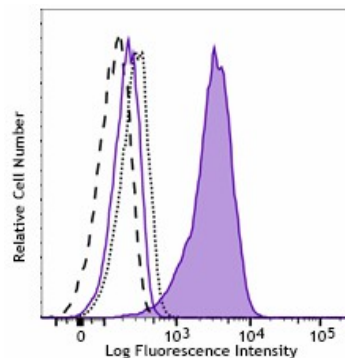
## Other Formats

---

Alexa Fluor® 488 anti-IRF4, Purified anti-IRF4, PE anti-IRF4, Alexa Fluor® 647 anti-IRF4, Go-ChIP-Grade™ Purified anti-IRF4, PE/Cyanine7 anti-IRF4, PerCP/Cyanine5.5 anti-IRF4, Alexa Fluor® 594 anti-IRF4, Pacific Blue™ anti-IRF4

## Product Data

---



PHA-stimulated (3 days) or freshly isolated human peripheral blood lymphocytes were stained with CD4 APC, this fixed and permeabilized with True-Nuclear™ Transcription Factor Buffer Set (Cat. No. 424401). Cells were then stained with IRF4 (clone IRF4.3E4) Pacific Blue™ (open histogram with solid line for fresh cells, filled histogram for stimulated cells) or rat IgG1, κ Pacific Blue™ isotype control (dash line for fresh cell, dot line for stimulated cells). Data shown was gated on CD4<sup>+</sup> lymphocyte population.

For research use only. Not for diagnostic use. Not for resale. BioLegend will not be held responsible for patent infringement or other violations that may occur with the use of our products.

\*These products may be covered by one or more Limited Use Label Licenses (see the BioLegend Catalog or our website, [www.biolegend.com/ordering#license](http://www.biolegend.com/ordering#license)). BioLegend products may not be transferred to third parties, resold, modified for resale, or used to manufacture commercial products, reverse engineer functionally similar materials, or to provide a service to third parties without written approval of BioLegend. By use of these products you accept the terms and conditions of all applicable Limited Use Label Licenses. Unless otherwise indicated, these products are for research use only and are not intended for human or animal diagnostic, therapeutic or commercial use.

BioLegend Inc., 8999 BioLegend Way, San Diego, CA 92121 [www.biolegend.com](http://www.biolegend.com)  
Toll-Free Phone: 1-877-Bio-Legend (246-5343) Phone: (858) 768-5800 Fax: (877) 455-9587