

PE anti-human CD56 (NCAM) Antibody

Catalog# / Size	362507 / 25 tests 362524 / 100 µg 362508 / 100 tests
Clone	5.1H11
Regulatory Status	RUO
Other Names	Leu-19, NKH1, NCAM-1
Isotype	Mouse IgG1, κ
Description	CD56 is a single transmembrane glycoprotein also known as NCAM (neural cell adhesion molecule), Leu-19, or NKH1. It is a member of the Ig superfamily. The 140 kD isoform is expressed on NK and NKT cells. CD56 is also expressed in the brain (cerebellum and cortex) and at neuromuscular junctions. Certain large granular lymphocyte (LGL) leukemias, small-cell lung carcinomas, neuronal derived tumors, myelomas, and myeloid leukemias also express CD56. CD56 plays a role in homophilic and heterophilic adhesion via binding to itself or heparan sulfate.

Product Details

Verified Reactivity	Human
Antibody Type	Monoclonal
Host Species	Mouse
Immunogen	Human myotube cells
Formulation	µg size: Phosphate-buffered solution, pH 7.2, containing 0.09% sodium azide. test sizes: Phosphate-buffered solution, pH 7.2, containing 0.09% sodium azide and BSA (origin USA).
Preparation	The antibody was purified by affinity chromatography and conjugated with PE under optimal conditions.
Concentration	µg sizes: 0.2 mg/mL test sizes: lot-specific (to obtain lot-specific concentration, please enter the lot number in our Concentration and Expiration Lookup or Certificate of Analysis online tools.)
Storage & Handling	The antibody solution should be stored undiluted between 2°C and 8°C, and protected from prolonged exposure to light. Do not freeze.
Application	FC - Quality tested
Recommended Usage	Each lot of this antibody is quality control tested by immunofluorescent staining with flow cytometric analysis . For flow cytometric staining using the µg size, the suggested use of this reagent is ≤0.4 µg per million cells in 100 µl volume. For flow cytometric staining using test sizes, the suggested use of this reagent is 5 µl per million cells in 100 µl staining volume or 5 µl per 100 µl of whole blood.
Excitation Laser	Blue Laser (488 nm) Green Laser (532 nm)/Yellow-Green Laser (561 nm)
Application References	1. Walsh FS, <i>et al.</i> 1981. <i>Nature</i> 289:60. (FC) 2. Pavlath GK, <i>et al.</i> 1986. <i>J. Cell Biol.</i> 102:124. (FC) 3. Pavlath GK, <i>et al.</i> 1989. <i>Nature</i> 337:570. (FC) 4. Pulido R, <i>et al.</i> 1988. <i>J. Immunol.</i> 140:3851. (FC)
Product Citations	1. Zheng G, <i>et al.</i> 2021. <i>Signal Transduct Target Ther.</i> 6:236. PubMed 2. Kim MY, <i>et al.</i> 2021. <i>JCI Insight.</i> 6: PubMed 3. Ding L, <i>et al.</i> 2021. <i>Cancers (Basel).</i> 13: PubMed 4. Segal JM, <i>et al.</i> 2019. <i>Nat Commun.</i> 10:3350. PubMed

5. Bayley JP, *et al.* 2022. PLoS One. 17:e0274478. [PubMed](#)
6. Gupta R, *et al.* 2022. Front Immunol. 13:886442. [PubMed](#)
7. Brighton PJ *et al.* 2017. eLife. 6 pii: e31274. [PubMed](#)
8. Wu X, *et al.* 2020. Cancers (Basel). 12:. [PubMed](#)
9. Scherer SD, *et al.* 2021. Breast Cancer Res. 23:100. [PubMed](#)
10. Chen P, *et al.* 2021. Front Immunol. 12:689019. [PubMed](#)
11. Chakraborty S, *et al.* 2022. Sci Transl Med. . [PubMed](#)
12. Leibel SL, *et al.* 2022. iScience. 25:103797. [PubMed](#)
13. Wu X, *et al.* 2021. Front Immunol. 12:731767. [PubMed](#)
14. Liu J, *et al.* 2022. iScience. 25:105509. [PubMed](#)
15. Vanoni G, *et al.* 2022. Bio Protoc. 218:. [PubMed](#)
16. Dhar P, *et al.* 2021. Commun Biol. 4:905. [PubMed](#)
17. Janssen JJE, *et al.* 2022. Am J Physiol Endocrinol Metab. 322:E141. [PubMed](#)
18. Rodriguez A, *et al.* 2021. Cell Stem Cell. 28:33. [PubMed](#)
19. Shaffer TM, *et al.* 2020. J Nucl Med. 1348:61. [PubMed](#)
20. Liu B, *et al.* 2019. Mol Med Rep. 20:2823. [PubMed](#)
21. Wang F, *et al.* 2021. Genomics Proteomics Bioinformatics. 19:208. [PubMed](#)
22. Lavaert M, *et al.* 2020. Immunity. 52(6):1088-1104. [PubMed](#)
23. Tomita T, *et al.* 2021. Nat Commun. 12:3655. [PubMed](#)

RRID AB_2563924 (BioLegend Cat. No. 362507)
 AB_2564161 (BioLegend Cat. No. 362524)
 AB_2563925 (BioLegend Cat. No. 362508)

Antigen Details

Structure	Ig superfamily, single transmembrane or GPI-anchored glycoprotein
Distribution	NK cells, T subset, neural tissue, some LGL and myeloid leukemias
Function	Adhesion
Ligand/Receptor	Heparan sulfate
Antigen References	<ol style="list-style-type: none"> 1. Lanier L, <i>et al.</i> 1991. <i>J. Immunol.</i> 146:4421 2. Hemperly J, <i>et al.</i> 1990. <i>J. Mol. Neurosci.</i> 2:71 3. Cremer H, <i>et al.</i> 1994. <i>Nature</i> 367:455.
Gene ID	4684

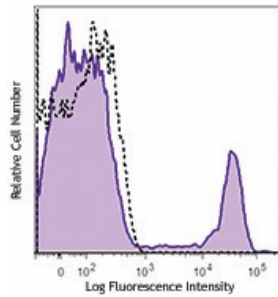
Related Protocols

[Cell Surface Flow Cytometry Staining Protocol](#)

Other Formats

Purified anti-human CD56 (NCAM), APC anti-human CD56 (NCAM), PerCP/Cyanine5.5 anti-human CD56 (NCAM), PE anti-human CD56 (NCAM), PE/Cyanine7 anti-human CD56 (NCAM), APC/Cyanine7 anti-human CD56 (NCAM), PE/Cyanine5 anti-human CD56 (NCAM), Alexa Fluor® 647 anti-human CD56 (NCAM), Alexa Fluor® 488 anti-human CD56 (NCAM), Pacific Blue™ anti-human CD56 (NCAM), Alexa Fluor® 700 anti-human CD56 (NCAM), PerCP anti-human CD56 (NCAM), Brilliant Violet 650™ anti-human CD56 (NCAM), Brilliant Violet 510™ anti-human CD56 (NCAM), Brilliant Violet 421™ anti-human CD56 (NCAM), Biotin anti-human CD56 (NCAM), Brilliant Violet 605™ anti-human CD56 (NCAM), Brilliant Violet 570™ anti-human CD56 (NCAM), Brilliant Violet 711™ anti-human CD56 (NCAM), PE/Dazzle™ 594 anti-human CD56 (NCAM), FITC anti-human CD56 (NCAM), Brilliant Violet 785™ anti-human CD56 (NCAM), Ultra-LEAF™ Purified anti-human CD56 (NCAM), APC/Fire™ 750 anti-human CD56 (NCAM), Brilliant Violet 750™ anti-human CD56 (NCAM), TotalSeq™-A0047 anti-human CD56 (NCAM), TotalSeq™-C0047 anti-human CD56 (NCAM), TotalSeq™-B0047 anti-human CD56 (NCAM), Spark NIR™ 685 anti-human CD56 (NCAM), KIRAVIA Blue 520™ anti-human CD56 (NCAM), GMP PE anti-human CD56 (NCAM), TotalSeq™-D0047 anti-human CD56 (NCAM), GMP APC anti-human CD56 (NCAM)

Product Data



Human peripheral blood lymphocytes were stained with CD56 (clone 5.1H11) PE (filled histogram) or mouse IgG1, κ PE isotype control (open histogram).

For research use only. Not for diagnostic use. Not for resale. BioLegend will not be held responsible for patent infringement or other violations that may occur with the use of our products.

*These products may be covered by one or more Limited Use Label Licenses (see the BioLegend Catalog or our website, www.biolegend.com/ordering#license). BioLegend products may not be transferred to third parties, resold, modified for resale, or used to manufacture commercial products, reverse engineer functionally similar materials, or to provide a service to third parties without written approval of BioLegend. By use of these products you accept the terms and conditions of all applicable Limited Use Label Licenses. Unless otherwise indicated, these products are for research use only and are not intended for human or animal diagnostic, therapeutic or commercial use.

BioLegend Inc., 8999 BioLegend Way, San Diego, CA 92121 www.biolegend.com
Toll-Free Phone: 1-877-Bio-Legend (246-5343) Phone: (858) 768-5800 Fax: (877) 455-9587