

PE anti-mouse CD21/CD35 (CR2/CR1) Antibody

| | |
|--------------------------|--|
| Catalog# / Size | 123409 / 50 µg 123410 / 200 µg |
| Clone | 7E9 |
| Regulatory Status | RUO |
| Other Names | CR2/CR1 |
| Isotype | Rat IgG2a, κ |
| Description | CD21, also known as CR2 (complement receptor 2) and C3d receptor, binds C3d and iC3b. It is also a receptor of Epstein-Barr virus. CD35, also known as CR1, binds C3b, iC3b, C4b, and iC4b. CD21/CD35 is primarily expressed on B lymphocytes, mast cells, follicular dendritic cells, macrophages, and activated granulocytes. CD21/CD35 forms part of the B-cell antigen receptor complex with CD19 and CD81 and is involved in signal transduction. |

Product Details

| | |
|-------------------------------|---|
| Verified Reactivity | Mouse |
| Antibody Type | Monoclonal |
| Host Species | Rat |
| Immunogen | CD35/CFA |
| Formulation | Phosphate-buffered solution, pH 7.2, containing 0.09% sodium azide. |
| Preparation | The antibody was purified by affinity chromatography, and conjugated with PE under optimal conditions. |
| Concentration | 0.2 mg/ml |
| Storage & Handling | The antibody solution should be stored undiluted between 2°C and 8°C, and protected from prolonged exposure to light. Do not freeze. |
| Application | FC - Quality tested |
| Recommended Usage | Each lot of this antibody is quality control tested by immunofluorescent staining with flow cytometric analysis . For flow cytometric staining, the suggested use of this reagent is ≤ 0.25 µg per 10 ⁶ cells in 100 µl volume. It is recommended that the reagent be titrated for optimal performance for each application. |
| Excitation Laser | Blue Laser (488 nm) Green Laser (532 nm)/Yellow-Green Laser (561 nm) |
| Application References | <ol style="list-style-type: none"> 1. Boackle S, <i>et al.</i> 2001 <i>Immunity</i> 15:775. 2. de Andres B, <i>et al.</i> 2012. <i>J. Immunol.</i> 189:2300. PubMed 3. Chiu YK, <i>et al.</i> 2014. <i>J Immunol.</i> 193:2207. PubMed 4. Koenig PA, <i>et al.</i> 2014. <i>J Biol Chem.</i> 289:34490. PubMed 5. Radtke AJ, <i>et al.</i> 2020. <i>Proc Natl Acad Sci U S A.</i> 117:33455-65. (SB) PubMed 6. Radtke AJ, <i>et al.</i> 2022. <i>Nat Protoc.</i> 17:378-401. (SB) PubMed |
| Product Citations | <ol style="list-style-type: none"> 1. Degn SE <i>et al.</i> 2017. <i>Cell.</i> 170(5):913-926 . PubMed 2. Delvecchio FR, <i>et al.</i> 2021. <i>Cell Mol Gastroenterol Hepatol.</i> 12:1543. PubMed 3. Prokopec K, <i>et al.</i> 2016. <i>J Immunol.</i> 197: 2063 - 2068. PubMed 4. Mogilenko DA, <i>et al.</i> 2020. <i>Immunity.</i> 54(1):99-115.e12. PubMed 5. Coleby R, <i>et al.</i> 2021. <i>Clin Exp Rheumatol.</i> :39. PubMed 6. Folgosa L, <i>et al.</i> 2013. <i>J Immunol.</i> 191:5951. PubMed 7. Aschman T, <i>et al.</i> 2021. <i>Int J Mol Sci.</i> 22:. PubMed 8. Crouse B, <i>et al.</i> 2020. <i>NPJ Vaccines.</i> 0.277083333. PubMed 9. Liu R, <i>et al.</i> 2018. <i>Front Immunol.</i> 9:592. PubMed 10. Souza SP, <i>et al.</i> 2021. <i>PLoS Pathog.</i> 17:e1010081. PubMed |

11. Liu R, *et al.* 2021. *Mol Cell Biol.* 41:e0025121. [PubMed](#)
12. Firl DJ *et al.* 2018. *eLife.* 7 pii: e33051. [PubMed](#)
13. Muri J, *et al.* 2020. *Cell Reports.* 29(9):2731-2744.e4.. [PubMed](#)
14. Simmons S *et al.* 2019. *Elife.* 8 pii: e41239. [PubMed](#)
15. Qiu Z, *et al.* 2020. *Cancer Genet.* 245:6. [PubMed](#)
16. Habener A, *et al.* 2021. *J Allergy Clin Immunol.* 147:2281. [PubMed](#)

RRID AB_940411 (BioLegend Cat. No. 123409)
 AB_940413 (BioLegend Cat. No. 123410)

Antigen Details

| | |
|---------------------------|---|
| Structure | 145 kD/190 kD type I transmembrane glycoprotein |
| Distribution | B cells, follicular dendritic cells |
| Function | Signal transduction |
| Ligand/Receptor | Associated with CD19/CD81. CD21 binds C3d, iC3b, and EBV; CD35 binds C3b, iC3b, C4b, and iC4b. |
| Cell Type | B cells, Dendritic cells |
| Biology Area | Cell Biology, Costimulatory Molecules, Immunology, Neuroinflammation, Neuroscience |
| Molecular Family | Adhesion Molecules, CD Molecules |
| Antigen References | <ol style="list-style-type: none"> 1. Kozono Y, <i>et al.</i> 1998. <i>J. Immunol.</i> 160:1562. 2. Shimizu I, <i>et al.</i> 2007. <i>Blood</i> 109:1773. 3. Roozendaal R and MC. Carroll. 2007. <i>Immunol. Rev.</i> 219:157. |
| Gene ID | 12902 12946 |

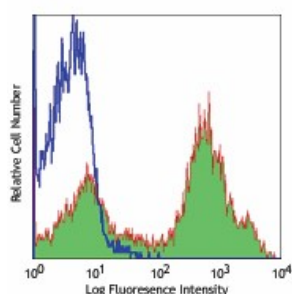
Related Protocols

[Cell Surface Flow Cytometry Staining Protocol](#)

Other Formats

PE/Cyanine7 anti-mouse CD21/CD35 (CR2/CR1), APC/Cyanine7 anti-mouse CD21/CD35 (CR2/CR1), Biotin anti-mouse CD21/CD35 (CR2/CR1), FITC anti-mouse CD21/CD35 (CR2/CR1), PE anti-mouse CD21/CD35 (CR2/CR1), APC anti-mouse CD21/CD35 (CR2/CR1), Pacific Blue™ anti-mouse CD21/CD35 (CR2/CR1), PerCP/Cyanine5.5 anti-mouse CD21/CD35 (CR2/CR1), Brilliant Violet 421™ anti-mouse CD21/CD35 (CR2/CR1), Alexa Fluor® 647 anti-mouse CD21/CD35 (CR2/CR1), Alexa Fluor® 594 anti-mouse CD21/CD35 (CR2/CR1), TotalSeq™-A0107 anti-mouse CD21/CD35 (CR2/CR1), Alexa Fluor® 700 anti-mouse CD21/CD35 (CR2/CR1), APC/Fire™ 750 anti-mouse CD21/CD35 (CR2/CR1), TotalSeq™-C0107 anti-mouse CD21/CD35 (CR2/CR1), Brilliant Violet 711™ anti-mouse CD21/CD35 (CR2/CR1), PE/Dazzle™ 594 anti-mouse CD21/CD35 (CR2/CR1), Brilliant Violet 510™ anti-mouse CD21/CD35 (CR2/CR1), Ultra-LEAF™ Purified anti-mouse CD21/CD35 (CR2/CR1)

Product Data



C57BL/6 mouse splenocytes stained with 7E9 PE

For research use only. Not for diagnostic use. Not for resale. BioLegend will not be held responsible for patent infringement or other violations that may occur with the use of our products.

*These products may be covered by one or more Limited Use Label Licenses (see the BioLegend Catalog or our website, www.biolegend.com/ordering#license). BioLegend products may not be transferred to third parties, resold, modified for resale, or used to manufacture commercial products, reverse engineer functionally similar materials, or to provide a service to third parties without written approval of BioLegend. By use of these products you accept the terms and conditions of all applicable Limited Use Label Licenses. Unless otherwise indicated, these products are for research use only and are not intended for human or animal diagnostic, therapeutic or commercial use.

BioLegend Inc., 8999 BioLegend Way, San Diego, CA 92121 www.biolegend.com
Toll-Free Phone: 1-877-Bio-Legend (246-5343) Phone: (858) 768-5800 Fax: (877) 455-9587