

PE/Cyanine7 anti-human CD56 (NCAM) Antibody

Catalog# / Size	318317 / 25 tests 318318 / 100 tests
Clone	HCD56
Regulatory Status	RUO
Other Names	Leu-19, NKH1
Isotype	Mouse IgG1, κ
Description	CD56 is a single transmembrane glycoprotein also known as NCAM (Neural Cell Adhesion Molecule), Leu-19, or NKH1. It is a member of the Ig superfamily. The 140 kD isoform is expressed on NK cells and NK-T cells. CD56 is also expressed in the brain (cerebellum and cortex) and at neuromuscular junctions. Certain large granular lymphocyte (LGL) leukemias, small-cell lung carcinomas, neuronal derived tumors, myelomas, and myeloid leukemias also express CD56. CD56 plays a role in homophilic and heterophilic adhesion via binding to itself or heparin sulfate.

Product Details

Verified Reactivity	Human
Reported Reactivity	African Green, Baboon, Cynomolgus, Rhesus
Antibody Type	Monoclonal
Host Species	Mouse
Formulation	Phosphate-buffered solution, pH 7.2, containing 0.09% sodium azide and BSA (origin USA)
Preparation	The antibody was purified by affinity chromatography, and conjugated with PE/Cyanine7 under optimal conditions.
Concentration	Lot-specific (to obtain lot-specific concentration, please enter the lot number in our Concentration and Expiration Lookup or Certificate of Analysis online tools.)
Storage & Handling	The antibody solution should be stored undiluted between 2°C and 8°C, and protected from prolonged exposure to light. Do not freeze.
Application	FC - Quality tested
Recommended Usage	Each lot of this antibody is quality control tested by immunofluorescent staining with flow cytometric analysis . For flow cytometric staining, the suggested use of this reagent is 5 µl per million cells in 100 µl staining volume or 5 µl per 100 µl of whole blood.
Excitation Laser	Blue Laser (488 nm) Green Laser (532 nm)/Yellow-Green Laser (561 nm)
Application Notes	Clone HCD56 is not recommended for immunohistochemistry formalin-fixed paraffin-embedded tissue.
Additional Product Notes	BioLegend is in the process of converting the name PE/Cy7 to PE/Cyanine7. The dye molecule remains the same, so you should expect the same quality and performance from our PE/Cyanine7 products. Please contact Technical Service if you have any questions.
Application References	1. Kishimoto T, <i>et al.</i> Eds. 1997. Leucocyte Typing VI. Garland Publishing Inc. London. 2. Correia DV, <i>et al.</i> 2011. <i>Blood</i> 118:992. (FC) PubMed
(PubMed link indicates BioLegend citation)	
Product Citations	1. Calabrese DR, <i>et al.</i> 2020. <i>J Clin Invest.</i> . PubMed 2. Wang H, <i>et al.</i> 2022. <i>Front Immunol.</i> 13:852436. PubMed 3. Wiernik A, <i>et al.</i> 2013. <i>Clin Cancer Res.</i> 19:3844. PubMed 4. Álvaro de Mingo Pulido <i>et al.</i> 2018. <i>Cancer cell.</i> 33(1):60-74 . PubMed

5. Park SY, *et al.* 2022. NPJ Vaccines. 7:123. [PubMed](#)
6. Kim JT, *et al.* 2022. Nat Commun. 13:121. [PubMed](#)
7. Figueroa-Romero C, *et al.* 2022. Front Immunol. 13:773288. [PubMed](#)
8. Chen M, *et al.* 2021. Cancers (Basel). 13:. [PubMed](#)
9. Wurzer H, *et al.* 2021. Front Immunol. 12:619069. [PubMed](#)
10. Bernareggi D, *et al.* 2022. Nat Commun. 13:1899. [PubMed](#)
11. Romee R, *et al.* 2013. Blood. 121:3599. [PubMed](#)
12. Cheent K, *et al.* 2013. Proc Natl Acad Sci U S A. 110:16981. [PubMed](#)
13. Gleason M, *et al.* 2014. Blood. 123:3016. [PubMed](#)
14. Mao Y, *et al.* 2016. Blood. 128: 1475 - 1489. [PubMed](#)
15. Arvindam US, *et al.* 2021. Leukemia. 35:1586. [PubMed](#)
16. Izmirly AM, *et al.* 2022. PLoS Pathog. 18:e1009903. [PubMed](#)
17. Witkowski MT, *et al.* 2020. Cancer Cell. 37:867. [PubMed](#)
18. Nabet BY, *et al.* 2020. Cell. 183(2):363-376.e13. [PubMed](#)
19. Laroni A, *et al.* 2016. J Autoimmun. 72:8-18. [PubMed](#)
20. Cooper GE, *et al.* 2018. Front Immunol. 9:1671. [PubMed](#)
21. Singh N, *et al.* 2017. J Endocrinol. 235:69. [PubMed](#)
22. Liu Y, *et al.* 2017. Oncogene. 10.1038/onc.2017.209. [PubMed](#)
23. Hakimi AA, *et al.* 2019. Cancer Discov. 9:510. [PubMed](#)
24. Mishra HK, *et al.* 2021. Front Immunol. 12:711621. [PubMed](#)
25. Zhu S, *et al.* 2022. J Oncol. 2022:8724933. [PubMed](#)
26. Ni J, *et al.* 2020. Immunity. 52(6):1075-1087.e8. [PubMed](#)
27. Madhavi V, *et al.* 2015. J Infect Dis. 211:529. [PubMed](#)
28. Murdock BJ, *et al.* 2021. JCI Insight. 6:. [PubMed](#)
29. Gleason M, *et al.* 2012. Mol Cancer Ther. 11:2674. [PubMed](#)
30. Hansen A, *et al.* 2016. Sci Rep. 6:35406. [PubMed](#)
31. Terszowski G, *et al.* 2014. J Immunol. 192:5618. [PubMed](#)
32. Pahl JHW, *et al.* 2018. Cancer Immunol Res. 0.609027778. [PubMed](#)
33. Felices M, *et al.* 2018. JCI Insight. 3. [PubMed](#)
34. Fisher JG, *et al.* 2021. Front Oncol. 11:785635. [PubMed](#)
35. Zhao NQ, *et al.* 2020. PLoS One. 15:e0238347. [PubMed](#)
36. Pi J, *et al.* 2022. J Nanobiotechnology. 20:36. [PubMed](#)
37. Andreano E, *et al.* 2021. Nature. Online ahead of print. [PubMed](#)
38. Van der Meer JM, *et al.* 2020. Cancer Immunol Immunother. . [PubMed](#)
39. Chen YP, *et al.* 2020. Cell Res. 30:1024. [PubMed](#)
40. Woods E, *et al.* 2021. NPJ Vaccines. 6:117. [PubMed](#)
41. Agelidis A, *et al.* 2017. Cell Rep. 10.1016/j.celrep.2017.06.041. [PubMed](#)
42. Kwant-Mitchell A, *et al.* 2009. PLoS One. 4:e8379. [PubMed](#)
43. Zhang C, *et al.* 2021. Cancer Biol Med. . [PubMed](#)
44. Kucykowicz S, *et al.* 2022. STAR Protoc. 3:101356. [PubMed](#)
45. Parent AV, *et al.* 2021. Cell Reports. 36(7):109538. [PubMed](#)
46. Sadallah S, *et al.* 2016. J Immunol. 197: 1663 - 1671. [PubMed](#)
47. Vallera D, *et al.* 2016. Clin Cancer Res. 22: 3440 - 3450. [PubMed](#)
48. Wang S, *et al.* 2022. Cancer Immunol Immunother. Online ahead of print. [PubMed](#)

RRID AB_604099 (BioLegend Cat. No. 318317)
 AB_604107 (BioLegend Cat. No. 318318)

Antigen Details

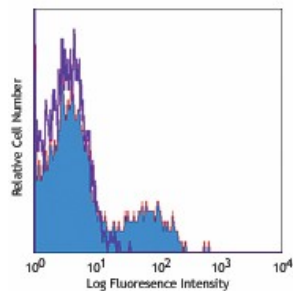
Structure	Ig superfamily, single transmembrane or GPI-anchored glycoprotein
Distribution	NK cells, T subset, neural tissue, some LGL and myeloid leukemias
Function	Adhesion
Ligand/Receptor	Heparin sulfate
Cell Type	B cells, Leukemia, Mesenchymal Stem Cells, Neurons, NK cells, T cells
Biology Area	Cell Adhesion, Cell Biology, Costimulatory Molecules, Immunology, Innate Immunity, Neuroscience, Stem Cells, Synaptic Biology
Molecular Family	Adhesion Molecules, CD Molecules
Antigen References	<ol style="list-style-type: none"> 1. Lanier L, <i>et al.</i> 1991. <i>J. Immunol.</i> 146:4421. 2. Hemperly J, <i>et al.</i> 1990. <i>J. Mol. Neurosci.</i> 2:71. 3. Cremer H, <i>et al.</i> 1994. <i>Nature</i> 367:455.
Gene ID	4684

Related Protocols

Other Formats

Purified anti-human CD56 (NCAM), FITC anti-human CD56 (NCAM), PE anti-human CD56 (NCAM), PE/Cyanine5 anti-human CD56 (NCAM), APC anti-human CD56 (NCAM), Alexa Fluor® 488 anti-human CD56 (NCAM), Alexa Fluor® 647 anti-human CD56 (NCAM), Alexa Fluor® 700 anti-human CD56 (NCAM), PE/Cyanine7 anti-human CD56 (NCAM), Biotin anti-human CD56 (NCAM), PerCP/Cyanine5.5 anti-human CD56 (NCAM), Pacific Blue™ anti-human CD56 (NCAM), APC/Cyanine7 anti-human CD56 (NCAM), Brilliant Violet 421™ anti-human CD56 (NCAM), Brilliant Violet 570™ anti-human CD56 (NCAM), Brilliant Violet 605™ anti-human CD56 (NCAM), Brilliant Violet 711™ anti-human CD56 (NCAM), Brilliant Violet 510™ anti-human CD56 (NCAM), PerCP anti-human CD56 (NCAM), Brilliant Violet 650™ anti-human CD56 (NCAM), Purified anti-human CD56 (NCAM) (Maxpar® Ready), PE/Dazzle™ 594 anti-human CD56 (NCAM)

Product Data



Human peripheral blood lymphocytes stained with HCD56 PE/Cyanine7

For research use only. Not for diagnostic use. Not for resale. BioLegend will not be held responsible for patent infringement or other violations that may occur with the use of our products.

*These products may be covered by one or more Limited Use Label Licenses (see the BioLegend Catalog or our website, www.biolegend.com/ordering#license). BioLegend products may not be transferred to third parties, resold, modified for resale, or used to manufacture commercial products, reverse engineer functionally similar materials, or to provide a service to third parties without written approval of BioLegend. By use of these products you accept the terms and conditions of all applicable Limited Use Label Licenses. Unless otherwise indicated, these products are for research use only and are not intended for human or animal diagnostic, therapeutic or commercial use.

BioLegend Inc., 8999 BioLegend Way, San Diego, CA 92121 www.biolegend.com
Toll-Free Phone: 1-877-Bio-Legend (246-5343) Phone: (858) 768-5800 Fax: (877) 455-9587