

## PE/Dazzle™ 594 anti-human CD8a Antibody

<b>Catalog# / Size</b>	301057 / 25 tests 301058 / 100 tests
<b>Clone</b>	RPA-T8
<b>Regulatory Status</b>	RUO
<b>Workshop</b>	IV T171
<b>Other Names</b>	T8, Leu2
<b>Isotype</b>	Mouse IgG1, κ
<b>Description</b>	CD8a is a 32-34 kD type I glycoprotein. It forms a homodimer (CD8a/a) or heterodimer (CD8a/b) with CD8b. CD8, also known as T8 and Leu2, is a member of the immunoglobulin superfamily found on the majority of thymocytes, a subset of peripheral blood T cells, and NK cells (which express almost exclusively CD8a homodimers). CD8 acts as a co-receptor with MHC class I-restricted T cell receptors in antigen recognition and T cell activation, and has been shown to play a role in thymic differentiation. Two domains in CD8a are important for function: the extracellular IgSF domain binds the α3 domain of MHC class I and the cytoplasmic CXCP motif binds the tyrosine kinase p56 Lck.

### Product Details

---

<b>Verified Reactivity</b>	Human, Cynomolgus, Rhesus
<b>Reported Reactivity</b>	Chimpanzee, Baboon, Pigtailed Macaque, Sooty Mangabey
<b>Antibody Type</b>	Monoclonal
<b>Host Species</b>	Mouse
<b>Formulation</b>	Phosphate-buffered solution, pH 7.2, containing 0.09% sodium azide and BSA (origin USA)
<b>Preparation</b>	The antibody was purified by affinity chromatography and conjugated with PE/Dazzle™ 594 under optimal conditions.
<b>Concentration</b>	Lot-specific (to obtain lot-specific concentration, please enter the lot number in our <a href="#">Concentration and Expiration Lookup</a> or <a href="#">Certificate of Analysis</a> online tools.)
<b>Storage &amp; Handling</b>	The antibody solution should be stored undiluted between 2°C and 8°C, and protected from prolonged exposure to light. <b>Do not freeze.</b>
<b>Application</b>	<a href="#">FC - Quality tested</a>
<b>Recommended Usage</b>	Each lot of this antibody is quality control tested by <a href="#">immunofluorescent staining with flow cytometric analysis</a> . For flow cytometric staining, the suggested use of this reagent is 5 µl per million cells in 100 µl staining volume or 5 µl per 100 µl of whole blood.  * PE/Dazzle™ 594 has a maximum excitation of 566 nm and a maximum emission of 610 nm.
<b>Excitation Laser</b>	Blue Laser (488 nm) Green Laser (532 nm)/Yellow-Green Laser (561 nm)
<b>Application Notes</b>	The RPA-T8 antibody does not block the binding of HIT8a antibody to CD8a. Additional reported applications of this antibody (for the relevant formats) include: immunohistochemical staining of paraformaldehyde-fixed frozen sections <sup>3</sup> and costimulation of T cell responses <sup>4</sup> . This clone was tested in-house and does not work on formalin fixed paraffin-embedded (FFPE) tissue. The Ultra-LEAF™ purified antibody (Endotoxin <0.1 EU/µg, Azide-Free, 0.2 µm filtered) is recommended for functional assays (Cat. Nos. 301073 & 301074).
<b>Application References</b>	<ol style="list-style-type: none"> <li>Knapp W, <i>et al.</i> Eds. 1989. Leucocyte Typing IV. Oxford University Press. New York.</li> <li>Schlossman S, <i>et al.</i> Eds. 1995. Leucocyte Typing V. Oxford University Press. New York.</li> <li>Mack CL, <i>et al.</i> 2004. <i>Pediatr. Res.</i> 56:79. (IHC)</li> <li>Magidovich E, <i>et al.</i> 2007. <i>P. Natl. Acad. Sci. USA</i> 104:13022.</li> </ol>
<b>(PubMed link indicates BioLegend citation)</b>	

5. Thakral D, *et al.* 2008. *J. immunol.* 180:7431. [PubMed](#)
6. Kmiecik M, *et al.* 2009. *J. Transl. Med.* 7:89. (FC) [PubMed](#)
7. Thakral D, *et al.* 2008. *J. Immunol.* 180:7431. (FC) [PubMed](#)
8. Yoshino N, *et al.* 2000. *Exp. Anim. (Tokyo)* 49:97. (FC)
9. Rout N, *et al.* 2010. *PLoS One* 5:e9787. (FC)
10. Stoeckius M, *et al.* 2017. *Nat. Methods.* 14:865. (PG)

#### Product Citations

1. Mo Y, *et al.* 2022. *Front Immunol.* 12:799896. [PubMed](#)
2. Weber MG, *et al.* 2021. *JCI Insight.* 6:. [PubMed](#)

#### RRID

AB\_2563569 (BioLegend Cat. No. 301057)  
 AB\_2563570 (BioLegend Cat. No. 301058)

### Antigen Details

<b>Structure</b>	Ig superfamily, homodimer or heterodimer with CD8 $\beta$ , 32-34 kD
<b>Distribution</b>	Majority of thymocytes, T cell subset, NK cells
<b>Function</b>	MHC class I co-receptor, thymic differentiation, T cell activation
<b>Ligand/Receptor</b>	MHC Class I molecules
<b>Cell Type</b>	Dendritic cells, NK cells, T cells, Thymocytes, Tregs
<b>Biology Area</b>	Immunology
<b>Molecular Family</b>	CD Molecules
<b>Antigen References</b>	1. Barclay N, <i>et al.</i> 1993. <i>The Leucocyte Antigen FactsBook.</i> Academic Press Inc. San Diego.
<b>Gene ID</b>	<a href="#">925</a>

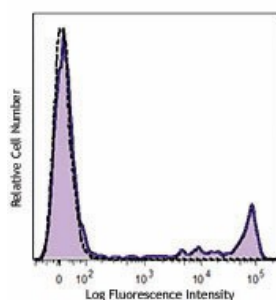
### Related Protocols

[Cell Surface Flow Cytometry Staining Protocol](#)

### Other Formats

APC anti-human CD8a, APC/Cyanine7 anti-human CD8a, Biotin anti-human CD8a, FITC anti-human CD8a, PE anti-human CD8a, PE/Cyanine5 anti-human CD8a, PE/Cyanine7 anti-human CD8a, Purified anti-human CD8a, Alexa Fluor® 488 anti-human CD8a, Alexa Fluor® 647 anti-human CD8a, Pacific Blue™ anti-human CD8a, Alexa Fluor® 700 anti-human CD8a, PerCP anti-human CD8a, PerCP/Cyanine5.5 anti-human CD8a, Brilliant Violet 421™ anti-human CD8a, Brilliant Violet 570™ anti-human CD8a, Brilliant Violet 605™ anti-human CD8a, Brilliant Violet 650™ anti-human CD8a, Brilliant Violet 711™ anti-human CD8a, Brilliant Violet 785™ anti-human CD8a, Brilliant Violet 510™ anti-human CD8a, Purified anti-human CD8a (Maxpar® Ready), Alexa Fluor® 594 anti-human CD8a, PE/Dazzle™ 594 anti-human CD8a, APC/Fire™ 750 anti-human CD8a, TotalSeq™-A0080 anti-human CD8a, TotalSeq™-B0080 anti-human CD8a, TotalSeq™-C0080 anti-human CD8a, Ultra-LEAF™ Purified anti-human CD8a, Spark Violet™ 423 anti-human CD8a Antibody

### Product Data



Human peripheral blood lymphocytes were stained with CD8 (clone RPA-T8) PE/Dazzle™ 594 (filled histogram) or mouse IgG1,  $\kappa$  PE/Dazzle™ 594 isotype control (open histogram).

For research use only. Not for diagnostic use. Not for resale. BioLegend will not be held responsible for patent infringement or other violations that may occur with the use of our products.

\*These products may be covered by one or more Limited Use Label Licenses (see the BioLegend Catalog or our website, [www.biolegend.com/ordering#license](http://www.biolegend.com/ordering#license)). BioLegend products may not be transferred to third parties, resold, modified for resale, or used to manufacture commercial products, reverse engineer functionally similar materials, or to provide a service to third parties without written approval of BioLegend. By use of these products you accept the terms and conditions of all applicable Limited Use Label Licenses. Unless otherwise indicated, these products are for research use only and are not intended for human or animal diagnostic, therapeutic or commercial use.

BioLegend Inc., 8999 BioLegend Way, San Diego, CA 92121 [www.biolegend.com](http://www.biolegend.com)  
Toll-Free Phone: 1-877-Bio-Legend (246-5343) Phone: (858) 768-5800 Fax: (877) 455-9587