

## Purified anti-mouse F4/80 Antibody

<b>Catalog# / Size</b>	111702 / 100 µg
<b>Clone</b>	W20065D
<b>Regulatory Status</b>	RUO
<b>Isotype</b>	Rat IgG2b, κ
<b>Description</b>	F4/80 is a 160 kD glycoprotein. It is characterized as a member of the epidermal growth factor (EGF)-transmembrane 7 (TM7) family. F4/80, also known as EMR1 or Ly71, has been widely used as a murine macrophage marker, which is expressed on the majority of tissue macrophages including peritoneal macrophages, macrophages in lung, gut, thymus and red pulp of spleen (but not on the macrophages located in T cell areas of the spleen, lymph node and Peyer's patch), Kuffer cells, Langerhans cells, and bone marrow stromal cells. F4/80 has also been shown on a subset of dendritic cells. The biological ligand of F4/80 has not been identified, but it has been reported that F4/80 is required for induction of CD8 <sup>+</sup> T cells-mediated peripheral tolerance.

### Product Details

---

<b>Verified Reactivity</b>	Mouse
<b>Antibody Type</b>	Monoclonal
<b>Host Species</b>	Rat
<b>Formulation</b>	Phosphate-buffered solution, pH 7.2, containing 0.09% sodium azide
<b>Preparation</b>	The antibody was purified by affinity chromatography.
<b>Concentration</b>	0.5 mg/mL
<b>Storage &amp; Handling</b>	The antibody solution should be stored undiluted between 2°C and 8°C.
<b>Application</b>	<a href="#">FC - Quality tested</a>
<b>Recommended Usage</b>	Each lot of this antibody is quality control tested by <a href="#">immunofluorescent staining with flow cytometric analysis</a> . For flow cytometric staining, the suggested use of this reagent is ≤ 0.25 µg per million cells in 100 µL volume. It is recommended that the reagent be titrated for optimal performance for each application.
<b>RRID</b>	AB_2924451 (BioLegend Cat. No. 111702)

### Antigen Details

---

<b>Structure</b>	EGF-TM7 family member, 160 kD glycoprotein
<b>Distribution</b>	Majority of tissue macrophages including peritoneal macrophages, macrophages in lung, gut, thymus and red pulp of spleen, Kuffer cells, Langerhans cells, bone marrow stromal cells, and a subset of dendritic cells
<b>Function</b>	Induction of immunological tolerance
<b>Cell Type</b>	Macrophages, Monocytes
<b>Biology Area</b>	Immunology, Innate Immunity

#### Antigen References

1. Austy JM and Gordon S. 1981. *Eur. J. Immunol.* 11:805.
2. Hume DA, *et al.* 1983. *J. Exp. Med.* 158:1522.
3. Ruedl C, *et al.* 1996. *Eur. J. Immunol.* 26:1801.
4. McKnight AJ, *et al.* 1996. *J. Biol. Chem.* 271:486.
5. Lin HH, *et al.* 2005. *J. Exp. Med.* 201:1615.

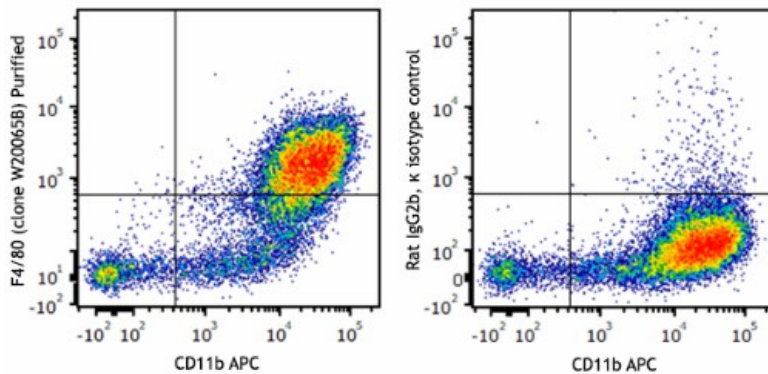
## Related Protocols

[Cell Surface Flow Cytometry Staining Protocol](#)

## Other Formats

Purified anti-mouse F4/80

## Product Data



Thioglycolate-elicited Balb/c mouse peritoneal macrophages were stained with anti-mouse CD11b APC and purified anti-mouse F4/80 (clone W20065D) (left) or purified rat IgG2b, κ isotype control (right), followed by PE anti-rat IgG.

For research use only. Not for diagnostic use. Not for resale. BioLegend will not be held responsible for patent infringement or other violations that may occur with the use of our products.

\*These products may be covered by one or more Limited Use Label Licenses (see the BioLegend Catalog or our website, [www.biolegend.com/ordering#license](http://www.biolegend.com/ordering#license)). BioLegend products may not be transferred to third parties, resold, modified for resale, or used to manufacture commercial products, reverse engineer functionally similar materials, or to provide a service to third parties without written approval of BioLegend. By use of these products you accept the terms and conditions of all applicable Limited Use Label Licenses. Unless otherwise indicated, these products are for research use only and are not intended for human or animal diagnostic, therapeutic or commercial use.

BioLegend Inc., 8999 BioLegend Way, San Diego, CA 92121 [www.biolegend.com](http://www.biolegend.com)  
Toll-Free Phone: 1-877-Bio-Legend (246-5343) Phone: (858) 768-5800 Fax: (877) 455-9587