

Purified anti-mouse IRF5 Antibody

Catalog# / Size	158601 / 25 µg 158602 / 100 µg
Clone	W16007B
Regulatory Status	RUO
Other Names	IRF5, Irf5, IRF-5, Interferon regulatory factor 5
Isotype	Rat IgG2a, κ
Description	The interferon regulatory factor (IRF) family of transcription factors comprises nine members with conserved domains. IRF5 mediates the induction of proinflammatory cytokine, such as IL-6 and TNFα. IRF5 is highly expressed in monocytes, macrophages, B cells, and dendritic cells. Expression of IRF5 is associated with many autoimmune diseases.

Product Details

Verified Reactivity	Mouse
Antibody Type	Monoclonal
Host Species	Rat
Immunogen	Mouse IRF5 recombinant protein (149-400 a.a.)
Formulation	Phosphate-buffered solution, pH 7.2, containing 0.09% sodium azide
Preparation	The antibody was purified by affinity chromatography.
Concentration	0.5 mg/mL
Storage & Handling	The antibody solution should be stored undiluted between 2°C and 8°C.
Application	WB - Quality tested ICFC, IP - Verified
Recommended Usage	Each lot of this antibody is quality control tested by western blotting. For western blotting, the suggested use of this reagent is 0.05 - 0.1 µg/mL. For intracellular flow cytometric staining, the suggested use of this reagent is ≤ 0.25 µg per million cells in 100 µL volume. For immunoprecipitation, the suggested use of this reagent is 2.5 µg/test. It is recommended that the reagent be titrated for optimal performance for each application.
Application Notes	<p>This clone was tested for ICC using RAW264.7 cells fixed with 4% PFA and permeabilized with either Triton X-100 or methanol. While both methods were compatible with IRF5 staining, the signal was weak and did not meet our sensitivity standards.</p> <p>This clone does not recognize human IRF5. For detection of human IRF5, please use BioLegend clone 11F4A09 (Cat. No. 652602).</p> <p>During product development testing of this clone for western blot, a ~37 kD protein of unknown origin was faintly detected. This protein may represent a minor IRF5 degradation product.</p>
RRID	AB_2904302 (BioLegend Cat. No. 158601) AB_2904302 (BioLegend Cat. No. 158602)

Antigen Details

Structure	497 a.a. (56 kD)
Distribution	Monocytes, macrophages, B cells, dendritic cells
Function	Involved in IFNα and IFNβ induction in response to viral infection

Cell Type B cells, Macrophages, Monocytes
Biology Area Immunology, Signal Transduction
Molecular Family Adaptor Proteins, Immune Checkpoint Receptors

Antigen References

1. Kobayashi S, *et al.* 2019. *J Immunol.* 203(6):1447-1456.
2. Nie S, *et al.* 2019. *Clin Immunol.* 207:24-35.
3. Pandey SP, *et al.* 2019. *Mucosal Immunol.* 12(4):1065.

Gene ID [27056](#)

Related Protocols

[Western Blotting Protocol](#)

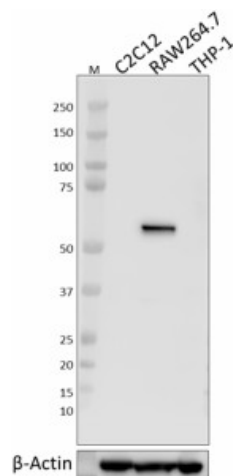
[Intracellular Flow Cytometry Staining Protocol](#)

[Immunoprecipitation Protocol](#)

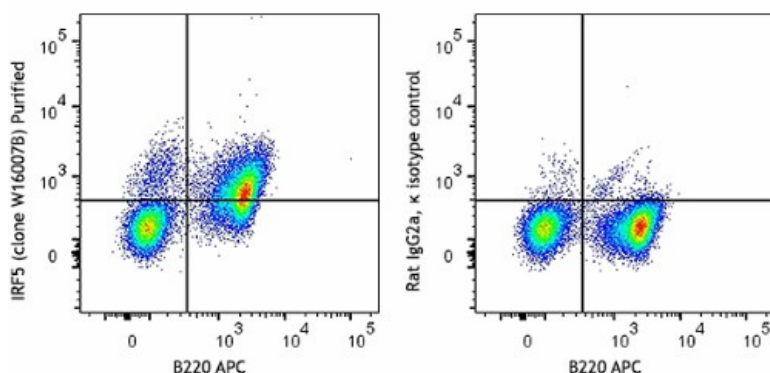
Other Formats

PE anti-mouse IRF5, Purified anti-mouse IRF5, APC anti-mouse IRF5

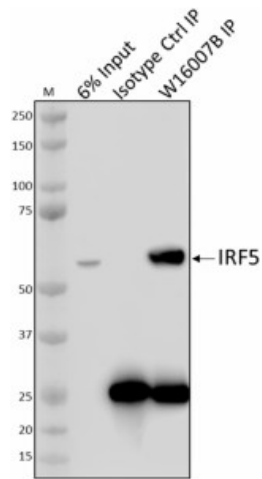
Product Data



Whole cell extracts (15 μ g protein) from C2C12 (reduced expression control), RAW264.7 (positive control), and THP-1 (mouse reactivity control) cells were resolved on a 4-12% Bis-Tris gel, transferred to PVDF and probed with 0.1 μ g/mL (1:5000 dilution) of purified anti-IRF5 antibody (clone W16007B) overnight at 4°C. Proteins were visualized by chemiluminescence detection using HRP goat anti-rat IgG antibody (Cat. No. 405405) at a 1:3000 dilution. Direct-Blot™ HRP anti- β -actin antibody (Cat. No. 643807) was used as a loading control at a 1:20000 dilution (lower). Lane M: Molecular weight marker.



C57BL/6 mouse splenocytes were fixed, permeabilized, and then stained with purified anti-mouse IRF5 antibody (clone W16007B) (left) or purified rat IgG2a, κ isotype control (right) followed by polyclonal goat anti-rat IgG secondary antibody PE. Cells were then washed and stained with anti-mouse/human B220 APC.



Whole cell extracts (250 µg total protein) prepared from RAW264.7 cells were immunoprecipitated overnight with 2.5 µg of purified rat IgG2a, κ isotype ctrl antibody (Cat. No. 400502) or purified anti-IRF5 antibody (clone W16007B). The resulting IP fractions and whole cell extract input (6%) were resolved by 4-12% Bis-Tris gel electrophoresis, transferred to a PVDF membrane, and probed with clone W16007B. Lane M: Molecular weight marker.

For research use only. Not for diagnostic use. Not for resale. BioLegend will not be held responsible for patent infringement or other violations that may occur with the use of our products.

*These products may be covered by one or more Limited Use Label Licenses (see the BioLegend Catalog or our website, www.biolegend.com/ordering#license). BioLegend products may not be transferred to third parties, resold, modified for resale, or used to manufacture commercial products, reverse engineer functionally similar materials, or to provide a service to third parties without written approval of BioLegend. By use of these products you accept the terms and conditions of all applicable Limited Use Label Licenses. Unless otherwise indicated, these products are for research use only and are not intended for human or animal diagnostic, therapeutic or commercial use.

BioLegend Inc., 8999 BioLegend Way, San Diego, CA 92121 www.biolegend.com
Toll-Free Phone: 1-877-Bio-Legend (246-5343) Phone: (858) 768-5800 Fax: (877) 455-9587