

## Purified anti-Sortilin Antibody

<b>Catalog# / Size</b>	852101 / 25 µg 852102 / 100 µg
<b>Clone</b>	W16078A
<b>Regulatory Status</b>	RUO
<b>Other Names</b>	100 kD NT receptor
<b>Isotype</b>	Rat IgG2a, κ
<b>Description</b>	Sortilin was originally purified from human brain tissue and was identified as a new lipoprotein receptor, which was later identified as a multifunctional sorting receptor of the VPS10P-domain receptor family. Although Sortilin is predominately expressed in neurons of the central and the peripheral nervous systems, it is also expressed in metabolic tissues including liver. Sortilin functions as a sorting receptor in the Golgi compartment and as a clearance receptor on the cell surface. Sortilin is critical for lipid metabolism, and it has been implicated in lipid disorders. Sortilin is also an APOE receptor implicated in Alzheimer disease.

### Product Details

---

<b>Verified Reactivity</b>	Human, Rat
<b>Antibody Type</b>	Monoclonal
<b>Host Species</b>	Rat
<b>Immunogen</b>	Human SORT1 recombinant protein (327-638 a.a.) expressed in <i>E. coli</i> .
<b>Formulation</b>	Phosphate-buffered solution, pH 7.2, containing 0.09% sodium azide.
<b>Preparation</b>	The antibody was purified by affinity chromatography.
<b>Concentration</b>	0.5 mg/ml
<b>Storage &amp; Handling</b>	The antibody solution should be stored undiluted between 2°C and 8°C.
<b>Application</b>	<a href="#">WB - Quality tested</a> <a href="#">IHC-P - Verified</a>
<b>Recommended Usage</b>	Each lot of this antibody is quality control tested by <a href="#">Western blotting</a> . For Western blotting, the suggested use of this reagent is 1.0 - 5.0 µg per ml. For immunohistochemistry, a concentration range of 2.0 - 5.0 µg/ml is suggested. It is recommended that the reagent be titrated for optimal performance for each application.
<b>RRID</b>	AB_2728587 (BioLegend Cat. No. 852101) AB_2728588 (BioLegend Cat. No. 852102)

### Antigen Details

---

<b>Structure</b>	Sortilin is an 831 amino acid protein with a molecular mass of 95 kD.
<b>Distribution</b>	Tissue distribution: Sortilin is expressed in numerous tissues including brain, spinal cord, heart, skeletal muscle, thyroid, placenta, and testis. Cellular distribution: Plasma membrane, cytosol, endosome, endoplasmic reticulum, lysosome, and golgi apparatus.
<b>Function</b>	Sortilin functions as a cell surface receptor and mediates intracellular trafficking of diverse endogenous or exogenous protein substrates between the trans-Golgi network and plasma membrane compartments.
<b>Interaction</b>	Sortilin interacts with p75 Neurotrophin Receptor and is localized together with the golgi marker GM130 and the early endosome marker EEA1.

<b>Ligand/Receptor</b>	Sortilin functions as lipoprotein receptor for neurotrophins and other growth factors.
<b>Biology Area</b>	Cell Biology, Neurodegeneration, Neuroscience, Neuroscience Cell Markers, Protein Trafficking and Clearance, Transcription Factors
<b>Molecular Family</b>	Golgi Markers
<b>Antigen References</b>	<ol style="list-style-type: none"> <li>1. Skeldal S, et al. 2012. J. Biol. Chem. 287:43798-809.</li> <li>2. Herda S, et al. 2012. Immunity. 37:854-66.</li> <li>3. Gao A, et al. 2017. DNA Cell Biol. 36:1050-1061.</li> <li>4. Carlo AS. 2013. Prion. 7:378-82.</li> </ol>
<b>Gene ID</b>	<a href="#">6272</a>

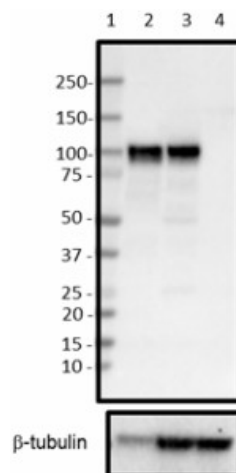
## Related Protocols

[Cell Surface Flow Cytometry Staining Protocol](#)

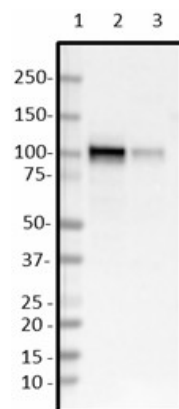
## Other Formats

Purified anti-Sortilin, HRP anti-Sortilin

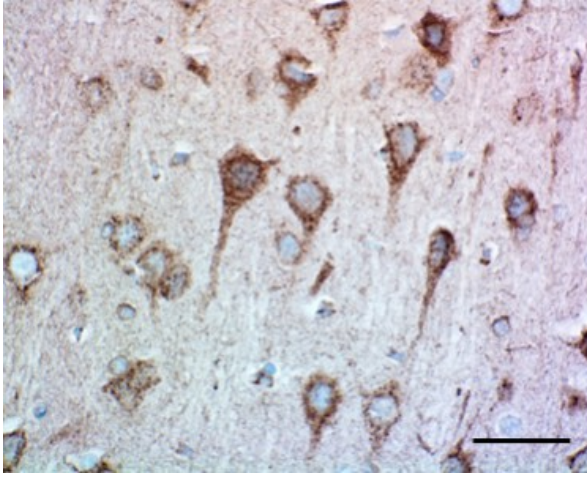
## Product Data



Western blot of purified anti-Sortilin antibody (clone W16078A). Lane 1: Molecular weight marker; Lane 2: 20  $\mu$ g of human brain lysate; Lane 3: 20  $\mu$ g of rat brain lysates; Lane 4: 20  $\mu$ g of mouse brain lysates. The blot was incubated with 1  $\mu$ g/ml of the primary antibody overnight at 4°C, followed by incubation with HRP-labeled goat anti-rat IgG (Cat. No. 405405).  $\beta$ -tubulin (Cat. No. 801206) was used as loading control. Enhanced chemiluminescence was used as the detection system.



Western blot of purified anti-Sortilin antibody (clone W16078A). Lane 1: Molecular weight marker; Lane 2: 20  $\mu$ g of SH-SY5Y cell lysate; Lane 3: 20  $\mu$ g of Hela cell lysate. The blot was incubated with 1  $\mu$ g/ml of the primary antibody overnight at 4°C, followed by incubation with HRP-labeled goat anti-rat IgG (Cat. No. 405405). Enhanced chemiluminescence was used as the detection system.



IHC staining of purified anti-Sortilin antibody (clone W16078A) on formalin-fixed paraffin-embedded rat brain tissue. Following antigen retrieval using Sodium Citrate H.I.E.R., the tissue was incubated with 2  $\mu\text{g}/\text{ml}$  of the primary antibody for 60 minutes at room temperature. After incubation with biotinylated anti-rat antibody, the tissue was labeled with BioLegend's HRP labeling reagent followed by addition of DAB chromogen (Cat. No. 926506) for detection and hematoxylin counterstaining, according to the protocol provided. The image was captured with a 40X objective. Scale bar 50  $\mu\text{m}$

For research use only. Not for diagnostic use. Not for resale. BioLegend will not be held responsible for patent infringement or other violations that may occur with the use of our products.

\*These products may be covered by one or more Limited Use Label Licenses (see the BioLegend Catalog or our website, [www.biolegend.com/ordering#license](http://www.biolegend.com/ordering#license)). BioLegend products may not be transferred to third parties, resold, modified for resale, or used to manufacture commercial products, reverse engineer functionally similar materials, or to provide a service to third parties without written approval of BioLegend. By use of these products you accept the terms and conditions of all applicable Limited Use Label Licenses. Unless otherwise indicated, these products are for research use only and are not intended for human or animal diagnostic, therapeutic or commercial use.

BioLegend Inc., 8999 BioLegend Way, San Diego, CA 92121 [www.biolegend.com](http://www.biolegend.com)  
Toll-Free Phone: 1-877-Bio-Legend (246-5343) Phone: (858) 768-5800 Fax: (877) 455-9587