

Rainbow Fluorescent Particles, 1 peak (3.0-3.4 μm) - Mid Range Intensity

Catalog# / Size	422905 / 5 mL
Regulatory Status	RUO
Other Names	Sphero™ brand beads, 1 peak Rainbow Calibration Bead
Description	<p>These Rainbow Fluorescent Particles consist of uniformly sized particles dyed with a mixture of fluorophores. These particles produce a single peak with tight CV in each detection channel of conventional flow cytometers within the specified excitation range. Rainbow Fluorescent Particles can be used with most optical filters intended for analysis of fluorophores commonly used for flow cytometry. As the excitation range of these rainbow particles is 365 - 650 nm, they can be used with most lasers. However, they are not for use with the UV laser. The emission spectra of these rainbow particles is compatible with many common fluorophores used in immunofluorescent staining with flow cytometric analysis.</p> <p>For standardization of cytometer detector settings between experiments, Rainbow Fluorescent Particles can be used to provide target channels to facilitate set up, ensuring data consistency in consequent runs. Rainbow Fluorescent Particles are available in two intensity levels: Mid Range Intensity (Cat. No. 422905) and Bright Intensity (Cat. No. 422907), providing flexibility to accommodate samples with different levels of background fluorescence.</p>

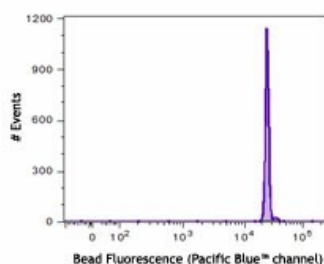
Product Details

Formulation	Rainbow Fluorescent Particles are in deionized water with 0.02% sodium azide and 0.01% NP-40.
Concentration	10^7 particles per ml.
Storage & Handling	Store between 2°C and 8°C. Do not freeze. Protect from light.
Application	FC
Recommended Usage	Resuspend well (e.g. vortex briefly) before adding 3-5 drops to 1 ml of filtered DI water.
Application Notes	<p>Use of Rainbow Fluorescent Particles, 1 peak (3.0-3.4 μm) - Mid Range Intensity, is common for the following purposes:</p> <ol style="list-style-type: none"> 1. Laser alignment 2. Standardization of instrument settings for longitudinal studies (can also use Rainbow Fluorescent Particles, 1 peak, Bright Intensity (Cat. No. 422907), and multi-peak Rainbow Calibration Particles (Cat. No. 422901 and 422903))
Application References	1. Perfetto SP, <i>et al.</i> 2006. <i>Nat. Protoc.</i> 1:1522.
(PubMed link indicates BioLegend citation)	

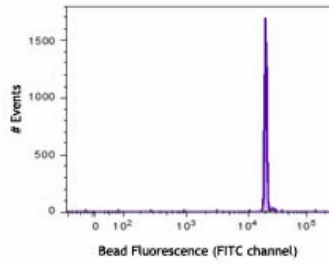
Antigen Details

Gene ID	NA
----------------	----

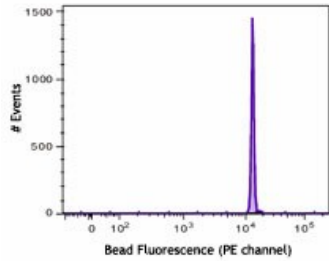
Product Data



Bead fluorescence at 405 nm excitation with a 450/50 BP filter (Pacific Blue™ channel).



Bead fluorescence at 488 nm excitation with a 530/30 BP filter (FITC channel).



Bead fluorescence at 561 nm excitation with a 582/15 BP filter (PE channel).

Rainbow Fluorescent Particles were analysed on a 4-laser BD LSRFortessa™ using detector voltages from a 15-color surface phenotyping assay identifying immune cell subsets in lysed whole blood.

For research use only. Not for diagnostic use. Not for resale. BioLegend will not be held responsible for patent infringement or other violations that may occur with the use of our products.

*These products may be covered by one or more Limited Use Label Licenses (see the BioLegend Catalog or our website, www.biolegend.com/ordering#license). BioLegend products may not be transferred to third parties, resold, modified for resale, or used to manufacture commercial products, reverse engineer functionally similar materials, or to provide a service to third parties without written approval of BioLegend. By use of these products you accept the terms and conditions of all applicable Limited Use Label Licenses. Unless otherwise indicated, these products are for research use only and are not intended for human or animal diagnostic, therapeutic or commercial use.

BioLegend Inc., 8999 BioLegend Way, San Diego, CA 92121 www.biolegend.com
 Toll-Free Phone: 1-877-Bio-Legend (246-5343) Phone: (858) 768-5800 Fax: (877) 455-9587