

Recombinant Mouse IL-15 (carrier-free)

Catalog# / Size	566301 / 2 µg 566302 / 10 µg 566304 / 100 µg
Regulatory Status	RUO
Other Names	IL-15
Description	<p>IL-15 was discovered in the supernatant of Simian kidney epithelial cell line CV-1/EBNA, as a soluble factor capable of supporting proliferation of the IL-2-dependent cell line, CTLL-2. IL-15 is a regulatory cytokine, and it is produced by dendritic cells, epithelial cells, fibroblasts, and monocytes. IL-15 plays an important role in immune response and shares many functions with IL-2. For example, it stimulates the proliferation of activated T cells, NK cells, and B cells, and induces immunoglobulin synthesis by B cells stimulated by anti-IgM or CD40 ligand. In addition, IL-15 promotes the development of dendritic cells and induces the production of proinflammatory cytokines from macrophages. IL-15 acts as a bridge between innate and adaptive immunity because of its diverse roles in the immune system.</p> <p>IL-15 binds to heterotrimeric receptors composed of IL-15Rα, IL-15Rβ, and IL-15Rγc. IL-15 shares the receptor chains β and γc with IL-2. IL-15 is normally not secreted in soluble form but is instead held on the cell surface bound to a unique receptor, IL-15Rα, especially on dendritic cells. Cell-bound IL-15 is then presented in trans form to T cells and NK cells and is recognized by the γc receptor on these cells; such recognition maintains cell survival and intermittent proliferation.</p>

Product Details

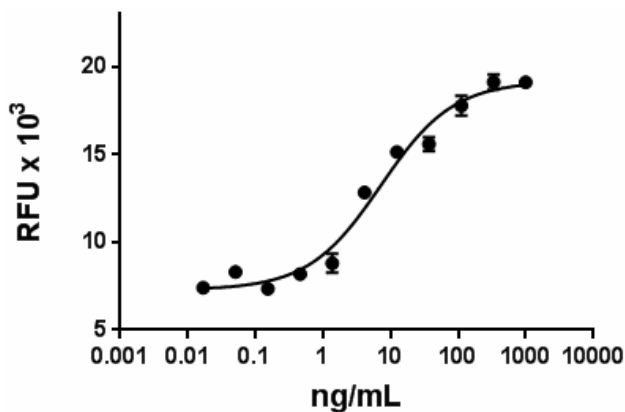
Source	Mouse IL-15, amino acids Asn49-Ser162 (Accession# NM_008357), was expressed in <i>E. coli</i> .
Molecular Mass	The 115 amino acid N-terminal methionylated recombinant protein has a predicted molecular mass of 13,382 Da.
Purity	Purity is >95%, as determined by Coomassie stained SDS-PAGE.
Formulation	Lyophilized from a concentrated solution (1 mg/ml) with 10 mM NaH ₂ PO ₄ , 150 mM NaCl, pH 8.0.
Endotoxin Level	Less than 1 EU/µg cytokine as determined by the LAL method.
Preparation	For maximum results, quick spin vial prior to opening. Reconstitute in sterile water to a concentration of 0.1 mg/ml including a carrier protein such as 1% BSA or HSA or 10% FBS.
Storage & Handling	Unopened vial can be stored between 2°C and 8°C for one month, at -20°C for six months, or at -70°C for one year. For maximum results, quick spin vial prior to opening. The protein can be aliquoted and stored from -20°C to -70°C. Stock solutions can also be prepared at 50-100 µg/mL in sterile buffer (PBS, HPBS, DPBS, or EBSS) containing carrier protein such as 0.2-1% BSA or HSA and stored in working aliquots at -20°C to -70°C. Avoid repeated freeze/thaw cycles.
Activity	ED ₅₀ =2.5 - 15 ng/ml, corresponding to a specific activity of 0.6 - 4 x 10 ⁵ units/mg, as determined by the dose dependent stimulation of CTLL-2 cell proliferation.
Application	Bioassay
Application Notes	This IL-15 protein is biologically active and can be used for <i>in vitro</i> assays.
Product Citations	<ol style="list-style-type: none"> Gupta SS, <i>et al.</i> 2019. Cell Rep. 29:1862. PubMed Masle-Farquhar E, <i>et al.</i> 2022. Immunity. Online ahead of print. PubMed Lv M, <i>et al.</i> 2020. Cell Res. 30:966. PubMed Chen X, <i>et al.</i> 2021. Cell Rep. 37:109991. PubMed Hills LB, <i>et al.</i> 2021. J Immunol. 206:89. PubMed Cartwright ANR, <i>et al.</i> 2021. Cancer Immunol Res. 9:470. PubMed Knox T, <i>et al.</i> 2019. Sci Rep. 9:6136. PubMed Schmid AS, <i>et al.</i> 2019. PLoS One. 14:e0219313. PubMed Walker JA, <i>et al.</i> 2020. Immunity. 51(1):104-118. PubMed Chmielewski M and Abken H 2017. Cell Rep.. 10.1016/j.celrep.2017.11.063. PubMed

Antigen Details

Structure	Cytokine
Distribution	IL-15 is expressed by DC, epithelial cells, fibroblasts, and monocytes.
Function	IL-15 stimulates the proliferation of activated T cells, NK cells, and B cells, and inducing immunoglobulin synthesis by B cells stimulated by anti-IgM or CD40 ligand. In addition, IL-15 promotes the development of dendritic cells, and induces the production of proinflammatory cytokines from macrophages.
Ligand/Receptor	IL-15R α , IL-15R β and IL-15 γ c
Cell Type	Hematopoietic stem and progenitors
Biology Area	Stem Cells, Immunology, Innate Immunity
Molecular Family	Cytokines/Chemokines
Antigen References	<ol style="list-style-type: none">1. Grabstein K, <i>et al.</i> 1994. <i>Science</i> 264:965.2. Ma A, <i>et al.</i> 2006. <i>Annu. Rev. Immunol.</i> 24:657.3. Meresse B, <i>et al.</i> 2004. <i>Immunity</i> 21:357.4. Armitage RJ, <i>et al.</i> 1995. <i>J. Immunol.</i> 154:483.5. Pulendran B, <i>et al.</i> 2004. <i>Eur. J. Immunol.</i> 34:66.6. Bouchard A, <i>et al.</i> 2004. <i>J. Leukoc. Biol.</i> 76:162.7. Ratthe C, <i>et al.</i> 2004. <i>J. Leukoc. Biol.</i> 75:893.8. Feng T, <i>et al.</i> 2008. <i>Cell. Immunol.</i> 5:189.9. Rubinstein MP, <i>et al.</i> 2006. <i>P. Natl. Acad. Sci. USA</i> 103:9166.

Gene ID [16168](#)

Product Data



Mouse IL-15 induces the proliferation of CTLL2 mouse cells. The ED₅₀ for this effect is 2.5 – 15 ng/mL.

For research use only. Not for diagnostic use. Not for resale. BioLegend will not be held responsible for patent infringement or other violations that may occur with the use of our products.

*These products may be covered by one or more Limited Use Label Licenses (see the BioLegend Catalog or our website, www.biolegend.com/ordering#license). BioLegend products may not be transferred to third parties, resold, modified for resale, or used to manufacture commercial products, reverse engineer functionally similar materials, or to provide a service to third parties without written approval of BioLegend. By use of these products you accept the terms and conditions of all applicable Limited Use Label Licenses. Unless otherwise indicated, these products are for research use only and are not intended for human or animal diagnostic, therapeutic or commercial use.

BioLegend Inc., 8999 BioLegend Way, San Diego, CA 92121 www.biolegend.com
Toll-Free Phone: 1-877-Bio-Legend (246-5343) Phone: (858) 768-5800 Fax: (877) 455-9587