

Veri-Cells™ Phospho PBMC (MAPK/ERK Pathway)

Catalog# / Size	426601 / 10 tests 426603 / 50 tests
Regulatory Status	RUO
Other Names	Control Cells
Description	<p>The reconstituted human PBMCs can be used for intracellular flow cytometry assays. They can also be used as a process control to ensure effective permeabilization when performing intracellular staining using True-Phos™ Perm Buffer.</p> <p>This product contains human cells, a potentially biohazardous material. Blood used in preparation of these samples was tested and found to be negative, using FDA approved methods, for antibody and nucleic acid testing against Human Immunodeficiency virus (HIV), Hepatitis B and C virus and HTLV (Human T-Lymphotropic virus I and II), surface antigen for Hepatitis B (HBsAg) virus and syphilis and West Nile Virus. Biological tests are not 100% accurate. Use standard precautions when handling and treat as if the product is capable of transmitting disease. When handling or disposing, follow precautions described in CDC and FDA recommendations and OSHA Bloodborne Pathogen guidelines.</p>

Kit Contents

Kit Contents	Cat. No. 426601 <ul style="list-style-type: none">• 2 vials of Veri-Cells™ Phospho PBMC (MAPK/ERK pathway) Vehicle Treated Cells• 2 vials of Veri-Cells™ Phospho PBMC (MAPK/ERK pathway) Stimulated Cells• 1 vial of Veri-Cells™ Reconstitution Buffer A Plus Cat. No. 426603 <ul style="list-style-type: none">• 10 vials of Veri-Cells™ Phospho (MAPK/ERK pathway) Vehicle Treated Cells• 10 vials of Veri-Cells™ Phospho (MAPK/ERK pathway) Stimulated Cells• 5 vials of Veri-Cells™ Reconstitution Buffer A Plus
---------------------	--

Veri-Cells™ Buffer A Plus is an improved version of the original Veri-Cells™ Buffer A to improve staining performance with tandem dyes.

Product Details

Formulation	Each kit contains an equal number of vials of unstimulated (vehicle treated) and stimulated Veri-Cells™ Phospho PBMC (MAPK/ERK pathway) cells (2 vials each for 10 tests, and 10 vials each for 50 tests), as well as Veri-Cells™ Buffer A Plus (1 vial for 10 tests and 5 vials for 50 tests). Each vial of Veri-Cells™ Phospho PBMC (MAPK/ERK pathway) contains approximately 1×10^6 lyophilized human peripheral blood mononuclear cells (PBMC).
Preparation	The Veri-Cells™ Phospho PBMC (MAPK/ERK pathway) Kit is prepared by stimulating human PBMCs with the Cell Activation Cocktail (Cat. No. 423301) for 15 minutes. The lyophilized cells can be reconstituted with Veri-Cells™ Buffer A Plus and permeabilized with True-Phos™ Perm Buffer (Cat. No. 425401).
Storage & Handling	Store the kit at 2°C - 8°C upon receipt. Do not open the sealed pouch until ready to use. The cells may be used for up to 5 days if properly stored at 2°C - 8°C in the buffer provided and processed according to the defined protocol.
Application	ICFC - Quality tested
Recommended Usage	50 μ L per test (after reconstitution with 325 μ L of Veri-Cells™ Buffer A Plus)
Application Notes	The Veri-Cells Phospho PBMC (MAPK/ERK pathway) Kit can be used as both positive and negative staining controls for members of the RAS mitogen-activated kinase (MAPK/ERK) pathway such as

phospho-S6, phospho-p38 and phospho-ERK 1/2. Additional intracellular targets may be detectable outside of those detailed on the CoA. Once reconstituted, the Veri-Cells™ Phospho PBMC (MAPK/ERK pathway) are processed and stained per the protocol detailed below. Deviations from the use of these reagents and procedures have not been assessed and may affect performance.

Cell subset	Acceptance Criteria, % positive of lymphocyte gate
Phospho-S6	60-100
Phospho-p38	30-100
Phospho-ERK	70-100

Note on indicated ranges: Percent positive values are obtained based on gates set on unstained cells. The antibodies used for testing were the following: Phospho-S6 (Clone D57.2.2E); Phospho-p38 (Clone 36/p38); Phospho-ERK (Clone 4B11B69). Variability in antibodies used, instruments, staining conditions and other factors may influence end-user values. The Certificate of Analysis specific values are provided as a reference. It is recommended that individual laboratories establish its own control values and ranges for each parameter based on laboratory specific conditions and protocols.

Please use our [CoA Look-Up Tool](#) to find the expected lot-specific frequencies of certain cell populations included within each lot of Phospho PBMC (MAPK/ERK Pathway). Percent positive is based on gates set on unstained cells. The Certificate of Analysis specific values are provided only as a reference. Variability in antibodies used, instruments, staining conditions and other factors may influence end-user values. It is recommended that individual laboratories establish its own control values and ranges for each parameter based on laboratory specific conditions and protocols.

Additional Product Notes

Veri-Cells™ Buffer A Plus is an improved version of the original Veri-Cells™ Buffer A to improve staining performance with tandem dyes.

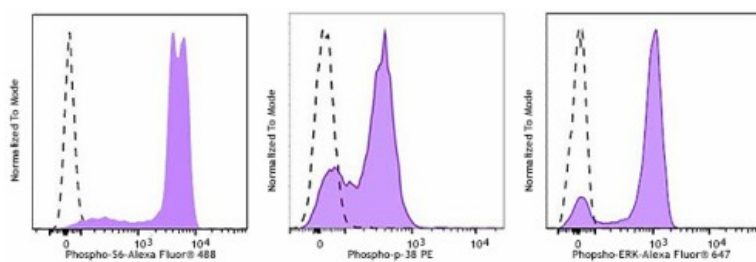
Antigen Details

Biology Area	Immunology
Molecular Family	Phospho-Proteins
Gene ID	NA

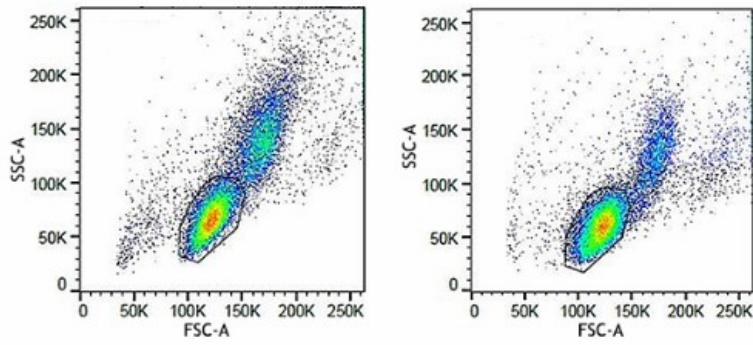
Related Protocols

[Protocol for using Veri-Cells™](#)

Product Data



Veri-Cells™ Phospho PBMC (MAPK/ERK pathway) vehicle control (open histogram) or Veri-Cells™ Phospho PBMC (MAPK/ERK pathway) stimulated control (closed histogram) were stained with anti-human phospho S6-Alexa Fluor® 488 (Left), anti-human phospho p38-PE (Center) or anti-human phospho ERK-Alexa Fluor® 647 (Right). The histograms are gated on the lymphocyte population.



Veri-Cells™ Phospho PBMC (MAPK/ERK pathway) scatter pattern. Veri-Cells™ Phospho PBMC (MAPK/ERK pathway) Vehicle Control (Left) and Veri-Cells™ Phospho PBMC (MAPK/ERK pathway) Stimulated Control (Right).

For research use only. Not for diagnostic use. Not for resale. BioLegend will not be held responsible for patent infringement or other violations that may occur with the use of our products.

*These products may be covered by one or more Limited Use Label Licenses (see the BioLegend Catalog or our website, www.biolegend.com/ordering#license). BioLegend products may not be transferred to third parties, resold, modified for resale, or used to manufacture commercial products, reverse engineer functionally similar materials, or to provide a service to third parties without written approval of BioLegend. By use of these products you accept the terms and conditions of all applicable Limited Use Label Licenses. Unless otherwise indicated, these products are for research use only and are not intended for human or animal diagnostic, therapeutic or commercial use.

BioLegend Inc., 8999 BioLegend Way, San Diego, CA 92121 www.biolegend.com
 Toll-Free Phone: 1-877-Bio-Legend (246-5343) Phone: (858) 768-5800 Fax: (877) 455-9587