

Alexa Fluor[®] 700 anti-human CD25 Antibody

Catalog# / Size	302621 / 25 µg 302622 / 100 µg
Clone	BC96
Regulatory Status	RUO
Workshop	V T-072
Other Names	Low affinity IL-2R, IL-2R α chain, Tac, p55
Isotype	Mouse IgG1, κ
Description	CD25 is a 55 kD type I transmembrane glycoprotein also known as the low affinity IL-2 receptor α chain or Tac. It is expressed on progenitor lymphocytes, activated T and B cells, and activated monocytes/macrophages. CD25 is also expressed on a subset of non-stimulated CD4 ⁺ T cells termed T regulatory cells. CD25 associates with the IL-2 receptor β (CD122) and common γ chains (CD132) to form the high affinity IL-2R complex.

Product Details

Verified Reactivity	Human
Reported Reactivity	Baboon, Chimpanzee, Cynomolgus, Pigtailed Macaque, Rhesus
Antibody Type	Monoclonal
Host Species	Mouse
Formulation	Phosphate-buffered solution, pH 7.2, containing 0.09% sodium azide.
Preparation	The antibody was purified by affinity chromatography and conjugated with Alexa Fluor [®] 700 under optimal conditions.
Concentration	0.5 mg/ml
Storage & Handling	The antibody solution should be stored undiluted between 2°C and 8°C, and protected from prolonged exposure to light. Do not freeze.
Application	FC - Quality tested
Recommended Usage	<p>Each lot of this antibody is quality control tested by immunofluorescent staining with flow cytometric analysis. The suggested use of this reagent is ≤0.5 µg per million cells in 100 µl volume. It is highly recommended that the reagent be titrated for optimal performance for each application.</p> <p>* Alexa Fluor[®] 700 has a maximum emission of 719 nm when it is excited at 633 nm / 635 nm. Prior to using Alexa Fluor[®] 700 conjugate for flow cytometric analysis, please verify your flow cytometer's capability of exciting and detecting the fluorochrome.</p> <p>Alexa Fluor[®] and Pacific Blue™ are trademarks of Life Technologies Corporation.</p> <p>View full statement regarding label licenses</p>
Excitation Laser	Red Laser (633 nm)
Application Notes	Additional reported applications include: immunocytochemistry ³ .
Application References	<ol style="list-style-type: none"> Schlossman S, <i>et al.</i> Eds. 1995. Leucocyte Typing V. Oxford University Press. New York. Kmieciak M, <i>et al.</i> 2009. <i>J. Transl. Med.</i> 7:89. (FC) PubMed Ernst CW, <i>et al.</i> 2007. <i>Clin. Exp. Immunol.</i> 148:271. (ICC) PubMed
(PubMed link indicates BioLegend citation)	
Product Citations	<ol style="list-style-type: none"> Fang L, <i>et al.</i> 2013. <i>Neuro Oncology.</i> 15:1479. PubMed Wan Q, <i>et al.</i> 2011. <i>J Exp Med.</i> 208:1875. PubMed Wang J, <i>et al.</i> 2009. <i>J Immunol.</i> 183:4119. PubMed

4. Hinterbrandner M, *et al.* 2021. JCI Insight. 6:e151797. [PubMed](#)
5. Andersch L, *et al.* 2019. BMC Cancer. 19:895. [PubMed](#)
6. Rankin CR, *et al.* 2020. Am J Physiol Gastrointest Liver Physiol. 318:G34. [PubMed](#)
7. Harper JL, *et al.* 2020. Nat Med. 519:26. [PubMed](#)
8. Milliken S, *et al.* 2012. J Allergy Clin Immunol. 129:1554. [PubMed](#)
9. Cornwell WD, *et al.* 2018. BMC Pulm Med. 0.820138889. [PubMed](#)

RRID AB_493754 (BioLegend Cat. No. 302621)
 AB_493755 (BioLegend Cat. No. 302622)

Antigen Details

Structure	Type I transmembrane glycoprotein, 55 kD
Distribution	Activated T cells and B cells, monocytes/macrophages, Treg
Function	Associates with IL-2 receptor β (CD122) and γ chains (CD132) to form high affinity IL-2R complex
Ligand/Receptor	IL-2
Cell Type	B cells, Macrophages, Monocytes, T cells, Tregs
Biology Area	Cell Biology, Immunology, Neuroscience, Neuroscience Cell Markers
Molecular Family	CD Molecules, Cytokine/Chemokine Receptors
Antigen References	1. Taniguchi T, <i>et al.</i> 1993. <i>Cell</i> 73:5. 2. Waldmann T. 1991. <i>J. Biol. Chem.</i> 266:2681.
Gene ID	3559

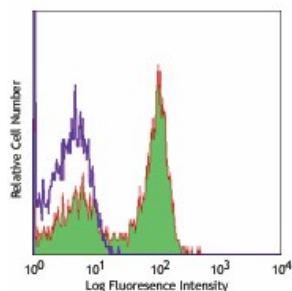
Related Protocols

[Cell Surface Flow Cytometry Staining Protocol](#)

Other Formats

APC anti-human CD25, FITC anti-human CD25, PE anti-human CD25, PE/Cyanine5 anti-human CD25, Purified anti-human CD25, APC/Cyanine7 anti-human CD25, PE/Cyanine7 anti-human CD25, Alexa Fluor® 488 anti-human CD25, Alexa Fluor® 647 anti-human CD25, Pacific Blue™ anti-human CD25, Alexa Fluor® 700 anti-human CD25, Biotin anti-human CD25, PerCP/Cyanine5.5 anti-human CD25, Brilliant Violet 421™ anti-human CD25, Brilliant Violet 605™ anti-human CD25, Brilliant Violet 650™ anti-human CD25, Brilliant Violet 711™ anti-human CD25, Brilliant Violet 785™ anti-human CD25, Brilliant Violet 510™ anti-human CD25, APC/Fire™ 750 anti-human CD25, TotalSeq™-A0085 anti-human CD25, PE/Dazzle™ 594 anti-human CD25, TotalSeq™-B0085 anti-human CD25, TotalSeq™-C0085 anti-human CD25, TotalSeq™-D0085 anti-human CD25

Product Data



PHA-stimulated (3 day) human peripheral blood lymphocytes were stained with CD25 (clone BC96) Alexa Fluor® 700 (filled histogram) or mouse IgG1, κ Alexa Fluor® 700 isotype control (open histogram).

*These products may be covered by one or more Limited Use Label Licenses (see the BioLegend Catalog or our website, www.biolegend.com/ordering#license). BioLegend products may not be transferred to third parties, resold, modified for resale, or used to manufacture commercial products, reverse engineer functionally similar materials, or to provide a service to third parties without written approval of BioLegend. By use of these products you accept the terms and conditions of all applicable Limited Use Label Licenses. Unless otherwise indicated, these products are for research use only and are not intended for human or animal diagnostic, therapeutic or commercial use.

BioLegend Inc., 8999 BioLegend Way, San Diego, CA 92121 www.biolegend.com
Toll-Free Phone: 1-877-Bio-Legend (246-5343) Phone: (858) 768-5800 Fax: (877) 455-9587