

APC anti-human CD14 Antibody

Catalog# / Size	325607 / 25 tests 325608 / 100 tests
Clone	HCD14
Regulatory Status	RUO
Other Names	LPS receptor
Isotype	Mouse IgG1, κ
Description	CD14 is a 53-55 kD glycosylphosphatidylinositol (GPI)-linked membrane glycoprotein also known as LPS receptor. CD14 is expressed at high levels on monocytes and macrophages, and at lower levels on granulocytes. Some dendritic cell populations such as interfollicular dendritic cells, reticular dendritic cells, and Langerhans cells have also been reported to express CD14. As a high-affinity receptor for LPS, CD14 is involved in the clearance of gram-negative pathogens and in the upregulation of adhesion molecules and cytokines expression in monocytes and neutrophils.

Product Details

Verified Reactivity	Human
Antibody Type	Monoclonal
Host Species	Mouse
Formulation	Phosphate-buffered solution, pH 7.2, containing 0.09% sodium azide and BSA (origin USA)
Preparation	The antibody was purified by affinity chromatography, and conjugated with APC under optimal conditions.
Concentration	Lot-specific (to obtain lot-specific concentration, please enter the lot number in our Concentration and Expiration Lookup or Certificate of Analysis online tools.)
Storage & Handling	The antibody solution should be stored undiluted between 2°C and 8°C, and protected from prolonged exposure to light. Do not freeze.
Application	FC - Quality tested
Recommended Usage	Each lot of this antibody is quality control tested by immunofluorescent staining with flow cytometric analysis . For flow cytometric staining, the suggested use of this reagent is 5 µl per million cells in 100 µl staining volume or 5 µl per 100 µl of whole blood.
Excitation Laser	Red Laser (633 nm)
Application Notes	Additional reported applications (for the relevant formats) include: immunofluorescence microscopy. This clone was tested in-house and does not work on formalin fixed paraffin-embedded (FFPE) tissue.
Application References	<ol style="list-style-type: none"> McMichael A, <i>et al.</i> 1987. Leucocyte Typing III. Oxford University Press. New York. Knapp W, <i>et al.</i> Eds. 1989. Leucocyte Typing IV. Oxford University Press. New York. Schlossman S, <i>et al.</i> Eds. 1995. Leucocyte Typing V. Oxford University Press. New York.
(PubMed link indicates BioLegend citation)	
Product Citations	<ol style="list-style-type: none"> Colonna L, <i>et al.</i> 2016. Clin Immunol. 163:84-90. PubMed Guo X, <i>et al.</i> 2016. Mol Ther Methods Clin Dev. 3:15054. PubMed Xun X, <i>et al.</i> 2021. Am J Transl Res. 13:4360. PubMed Lamichhane R, <i>et al.</i> 2020. Eur J Immunol. 50:178. PubMed Hearnden R, <i>et al.</i> 2021. STAR Protocols. 2(2):100422. PubMed Allegrezza M, <i>et al.</i> 2016. Cancer Res. 76: 6253 - 6265. PubMed Zhong J, <i>et al.</i> 2018. Sci Adv. 4:eaas9864. PubMed Wang E, <i>et al.</i> 2021. Cell Stem Cell. 28(4):718-731.e6. PubMed Schepp J, <i>et al.</i> 2017. Arthritis Rheumatol. 69:1689. PubMed Liu Y, <i>et al.</i> 2021. Front Immunol. 11:579372. PubMed

11. Wang Y, *et al.* 2021. *Sci Rep.* 1.429861111. [PubMed](#)
12. Keller M, *et al.* 2013. *PLoS One.* 12:79601. [PubMed](#)
13. Pellegrini JM, *et al.* 2021. *Sci Rep.* 11:13559. [PubMed](#)
14. Collins D, *et al.* 2015. *PLoS Pathog.* 11: 1005054. [PubMed](#)
15. Fisch D, *et al.* 2022. *Pathog Dis.* 79: [PubMed](#)
16. Fu W, *et al.* 2016. *Sci Rep.* 6:38162. [PubMed](#)
17. Rohner L, *et al.* 2020. *Sci Rep.* 0.570833333. [PubMed](#)
18. Hakimi AA, *et al.* 2019. *Cancer Discov.* 9:510. [PubMed](#)
19. Zhu Y, *et al.* 2019. *Cell Stem Cell.* 25:542. [PubMed](#)
20. Vabret N, *et al.* 2022. *iScience.* 25:104599. [PubMed](#)
21. Fujisaka Y, *et al.* 2018. *Oncol Lett.* 15:509. [PubMed](#)
22. Li YR, *et al.* 2021. *Cell Rep Med.* 2:100449. [PubMed](#)
23. Akoumianaki T, *et al.* 2021. *Cell Host Microbe.* [PubMed](#)
24. Molina MS, *et al.* 2021. *Front Immunol.* 12:699128. [PubMed](#)
25. Domanska D, *et al.* 2022. *J Exp Med.* 219: [PubMed](#)
26. Cointe S, *et al.* 2018. *J Extracell Vesicles.* 7:1494482. [PubMed](#)
27. Wee Y, *et al.* 2016. *Exp Biol Med.* 241: 1217 - 1228. [PubMed](#)

RRID AB_830680 (BioLegend Cat. No. 325607)
 AB_830681 (BioLegend Cat. No. 325608)

Antigen Details

Structure	GPI-linked membrane glycoprotein, 53-55 kD
Distribution	Monocytes, macrophages, granulocytes (low)
Function	LPS receptor, clearance of Gram-negative pathogens
Ligand/Receptor	LPS
Cell Type	Granulocytes, Macrophages, Monocytes, Neutrophils
Biology Area	Cell Biology, Immunology, Innate Immunity, Neuroinflammation, Neuroscience
Molecular Family	CD Molecules
Antigen References	1. Stocks S, <i>et al.</i> 1990. <i>Biochem. J.</i> 268:275. 2. Wright S, <i>et al.</i> 1990. <i>Science</i> 249:1434.
Gene ID	929

Related Protocols

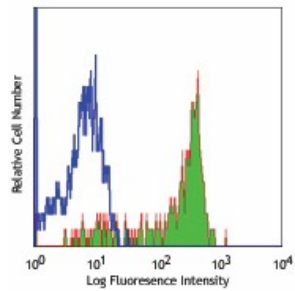
[Cell Surface Flow Cytometry Staining Protocol](#)

Other Formats

PerCP anti-human CD14, Purified anti-human CD14, FITC anti-human CD14, PE anti-human CD14, APC anti-human CD14, Alexa Fluor® 488 anti-human CD14, Alexa Fluor® 647 anti-human CD14, Alexa Fluor® 700 anti-human CD14, Pacific Blue™ anti-human CD14, PE/Cyanine7 anti-human CD14, APC/Cyanine7 anti-human CD14, PerCP/Cyanine5.5 anti-human CD14, Biotin anti-human CD14, Brilliant Violet 421™ anti-human CD14, Alexa Fluor® 594 anti-human CD14, PE/Dazzle™ 594 anti-human CD14, Spark Blue™ 574 anti-human CD14

Product Data

Human peripheral blood monocytes
stained with HCD14 APC



For research use only. Not for diagnostic use. Not for resale. BioLegend will not be held responsible for patent infringement or other violations that may occur with the use of our products.

*These products may be covered by one or more Limited Use Label Licenses (see the BioLegend Catalog or our website, www.biolegend.com/ordering#license). BioLegend products may not be transferred to third parties, resold, modified for resale, or used to manufacture commercial products, reverse engineer functionally similar materials, or to provide a service to third parties without written approval of BioLegend. By use of these products you accept the terms and conditions of all applicable Limited Use Label Licenses. Unless otherwise indicated, these products are for research use only and are not intended for human or animal diagnostic, therapeutic or commercial use.

BioLegend Inc., 8999 BioLegend Way, San Diego, CA 92121 www.biolegend.com
Toll-Free Phone: 1-877-Bio-Legend (246-5343) Phone: (858) 768-5800 Fax: (877) 455-9587