

APC anti-human CD339 (Jagged 1) Antibody

Catalog# / Size	399105 / 25 tests
Clone	W16199B
Regulatory Status	RUO
Other Names	JAG1/Jagged1
Isotype	Rat IgG2a, κ
Description	CD339, also known as Jagged 1, is a 135 kDa type 1 transmembrane protein with one DSL (Delta, Serrate, LagZ) domain, fifteen EGF-like domains, and one cysteine-rich region. Jagged 1 is expressed by many cell types including macrophages, subsets of dendritic cells, astrocytes, stromal, and epithelial cells. Jagged 1 regulates cell fate decisions in various tissues, and has an important role in neurogenesis and development of the cardiovascular system. Some studies suggest Jagged 1 is also involved in Th2 polarization and Treg induction.

Product Details

Verified Reactivity	Human
Antibody Type	Monoclonal
Host Species	Rat
Immunogen	Human Jagged-transfected RBL1 cells
Formulation	Phosphate-buffered solution, pH 7.2, containing 0.09% sodium azide and BSA (origin USA)
Preparation	The antibody was purified by affinity chromatography and conjugated with APC under optimal conditions.
Concentration	Lot-specific (to obtain lot-specific concentration, please enter the lot number in our Concentration and Expiration Lookup or Certificate of Analysis online tools.)
Storage & Handling	The antibody solution should be stored undiluted between 2°C and 8°C, and protected from prolonged exposure to light. Do not freeze.
Application	FC - Quality tested
Recommended Usage	Each lot of this antibody is quality control tested by immunofluorescent staining with flow cytometric analysis . For flow cytometric staining, the suggested use of this reagent is 5 µL per million cells in 100 µL staining volume or 5 µL per 100 µL of whole blood. It is recommended that the reagent be titrated for optimal performance for each application.
Excitation Laser	Red Laser (633 nm)
RRID	AB_2894539 (BioLegend Cat. No. 399105)

Antigen Details

Structure	A 135 kD type 1 transmembrane protein with 1 DSL domain, 15 EGF-like domain and 1 cysteine-rich region.
Distribution	Macrophages, subset of dendritic cells, astrocytes, stromal and epithelial cells.
Function	Regulate cell fate decisions in tissues, neurogenesis, Th2 polarization, and Treg induction
Ligand/Receptor	Notch
Cell Type	Astrocytes, Dendritic cells, Epithelial cells, Macrophages, Monocytes

Biology Area Cardiovascular Biology, Immunology, Neuroscience

Molecular Family CD Molecules

Antigen References

1. Oda T, *et al.* 1997. *Nat. Genet.* 16:235.
2. Li L, *et al.* 1997. *Nat. Genet.* 16:243.
3. Guarnaccia C, *et al.* 2004. *FEBS Letters.* 574:156.
4. High FA, *et al.* 2008. *Proc. Natl. Acad. Sci.* 105:1955.
5. Kopan R and Ilagan MX. 2009. *Cell.* 137:216.
6. Reedijk M, *et al.* 2005. *Cancer Res.* 65:8530.
7. Grochowski CM, *et al.* 2016. *Gene.* 576:381.
8. Hofmann JJ, *et al.* 2012. *Development.* 139:4449.

Gene ID [182](#)

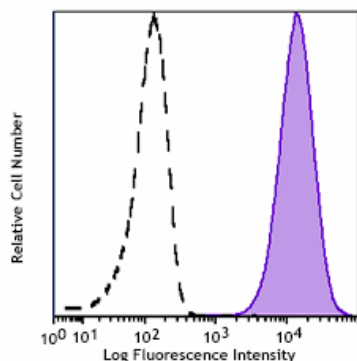
Related Protocols

[Cell Surface Flow Cytometry Staining Protocol](#)

Other Formats

Purified anti-human CD339 (Jagged 1), Alexa Fluor® 647 anti-human CD339 (Jagged 1) Antibody, APC anti-human CD339 (Jagged 1) Antibody, PE anti-human CD339 (Jagged 1)

Product Data



Human U251 glioblastoma cells were stained with purified anti-human CD339 (Jagged 1) APC (clone W16199B) (filled histogram) or purified rat IgG2a, κ isotype control APC (open histogram).

For research use only. Not for diagnostic use. Not for resale. BioLegend will not be held responsible for patent infringement or other violations that may occur with the use of our products.

*These products may be covered by one or more Limited Use Label Licenses (see the BioLegend Catalog or our website, www.biolegend.com/ordering#license). BioLegend products may not be transferred to third parties, resold, modified for resale, or used to manufacture commercial products, reverse engineer functionally similar materials, or to provide a service to third parties without written approval of BioLegend. By use of these products you accept the terms and conditions of all applicable Limited Use Label Licenses. Unless otherwise indicated, these products are for research use only and are not intended for human or animal diagnostic, therapeutic or commercial use.

BioLegend Inc., 8999 BioLegend Way, San Diego, CA 92121 www.biolegend.com
Toll-Free Phone: 1-877-Bio-Legend (246-5343) Phone: (858) 768-5800 Fax: (877) 455-9587