

APC anti-human HLA-DR Antibody

Catalog# / Size	307609 / 25 tests 307610 / 100 tests
Clone	L243
Regulatory Status	RUO
Other Names	Major Histocompatibility Class II, MHC class II
Isotype	Mouse IgG2a, κ
Description	HLA-DR is a heterodimeric cell surface glycoprotein comprised of a 36 kD α (heavy) chain and a 27 kD β (light) chain. It is expressed on B cells, activated T cells, monocytes/macrophages, dendritic cells, and other non-professional APCs. In conjunction with the CD3/TCR complex and CD4 molecules, HLA-DR is critical for efficient peptide presentation to CD4 ⁺ T cells.

Product Details

Verified Reactivity	Human, Cynomolgus, Rhesus
Reported Reactivity	African Green, Baboon, Chimpanzee, Dog, Common Marmoset, Squirrel Monkey, Cotton-topped Tamarin
Antibody Type	Monoclonal
Host Species	Mouse
Formulation	Phosphate-buffered solution, pH 7.2, containing 0.09% sodium azide and BSA (origin USA)
Preparation	The antibody was purified by affinity chromatography, and conjugated with APC under optimal conditions.
Concentration	Lot-specific (to obtain lot-specific concentration, please enter the lot number in our Concentration and Expiration Lookup or Certificate of Analysis online tools.)
Storage & Handling	The antibody solution should be stored undiluted between 2°C and 8°C, and protected from prolonged exposure to light. Do not freeze.
Application	FC - Quality tested
Recommended Usage	Each lot of this antibody is quality control tested by immunofluorescent staining with flow cytometric analysis . For flow cytometric staining, the suggested use of this reagent is 5 µl per million cells in 100 µl staining volume or 5 µl per 100 µl of whole blood.
Excitation Laser	Red Laser (633 nm)
Application Notes	<p>The L243 monoclonal antibody reacts with the HLA-DR antigen, a member of MHC class II molecules. It does not cross react with HLA-DP and HLA-DQ. Clone L243 binds a conformational epitope on HLA-DRA which depends on the correct folding of the αβ heterodimer.¹⁹</p> <p>Additional reported applications (for the relevant formats) include: immunoprecipitation⁸, Western blotting⁸, <i>in vitro</i> blocking of mixed lymphocyte reactions^{9,10}, depletion of MHC class II cells⁷, immunohistochemical staining of acetone-fixed frozen sections^{4,5}, and spatial biology (IBEX)^{21,22}. For sensitive functional assays, we recommend using the Ultra-LEAF™ purified antibody (Endotoxin < 0.01 EU/µg, Azide-Free, 0.2 µm filtered) (Cat. No. 307648, 307665 - 307669).</p>
Application References	<ol style="list-style-type: none"> 1. Brodsky F. 1984. <i>Immunogenetics</i> 19:179. 2. Robbins P, <i>et al.</i> 1987. <i>Human Immunol.</i> 18:301. 3. Stites D, <i>et al.</i> 1986. <i>Clin. Immunol. Immunopathol.</i> 38:161. 4. Warnke R, <i>et al.</i> 1980. <i>J. Histochem. Cytochem.</i> 28:771. (IHC) 5. Engleman E, <i>et al.</i> 1981. <i>P. Natl. Acad. Sci. USA</i> 78:1791. (IHC) 6. Zipf T, <i>et al.</i> 1981. <i>Cancer Res.</i> 41:4786. 7. Goodier M, <i>et al.</i> 2000. <i>J. Immunol.</i> 165:139. (Depletion) 8. Esser M, <i>et al.</i> 2001. <i>J. Virol.</i> 75:6173. (IP, WB)
(PubMed link indicates BioLegend citation)	

9. Kalka-Moll WM, *et al.* 2002. *J. Immunol.* 169:6149. (Block)
10. Wang RF, *et al.* 1999. *Science* 284:1351. (Block)
11. Zaba LC, *et al.* 2007. *J. Exp. Med.* 204:3183. [PubMed](#)
12. Fujita H, *et al.* 2009. *P. Natl. Acad. Sci. USA* 106:21795. [PubMed](#)
13. Charles N, *et al.* 2010. *Nat. Med.* 16:701. (FC) [PubMed](#)
14. Goncalves RM, *et al.* 2010. *Infect. Immun.* 78:4763. [PubMed](#)
15. Yoshino N, *et al.* 2000. *Exp. Anim. (Tokyo)* 49:97. (FC)
16. Kim WK, *et al.* 2006. *Am. J. Pathol.* 168:822. (FC)
17. Stein R, *et al.* 2011. *Leuk. Lymphoma* 52:273.
18. Galkowska H, *et al.* 1996. *Vet. Immunol. Immunopathol.* 53:329.
19. Moro M, *et al.* 2005. *BMC Immunol.* 6:24.
20. Lauterbach N, *et al.* 2014. *Mol Immunol.* 59:19. [PubMed](#)
21. Radtke AJ, *et al.* 2020. *Proc Natl Acad Sci USA.* 117:33455-33465. (SB) [PubMed](#)
22. Radtke AJ, *et al.* 2022. *Nat Protoc.* 17:378-401. (SB) [PubMed](#)

Product Citations

1. Zizzo G, *et al.* 2012. *J Immunol.* 189:3508. [PubMed](#)
2. Vielle NJ, *et al.* 2018. *Sci Rep.* 8:5440. [PubMed](#)
3. Wenthe J, *et al.* 2021. *Cancer Immunology Immunotherapy.* . [PubMed](#)
4. Han J, *et al.* 2022. *FEBS J.* 289:417. [PubMed](#)
5. Porter RL, *et al.* 2022. *J Clin Invest.* .: [PubMed](#)
6. Alfaro C, *et al.* 2016. *Clin Cancer Res.* 22: 3924 - 3936. [PubMed](#)
7. Parenti S, *et al.* 2021. *NPJ Precis Oncol.* 5:4. [PubMed](#)
8. Ramaswamy A, *et al.* 2021. *Immunity.* 54(5):1083-1095.e7. [PubMed](#)
9. M?czy?ska J, *et al.* 2020. *Cell Death Dis.* 1.073611111. [PubMed](#)
10. Leite NC, *et al.* 2020. *Cell Reports.* 32(2):107894.. [PubMed](#)
11. Wang Y, *et al.* 2019. *J Transl Med.* 17:93. [PubMed](#)
12. Kotsiou E, *et al.* 2016. *Blood.* 128: 72 - 81. [PubMed](#)
13. Rodda LB, *et al.* 2020. *Cell.* 184(1):169-183.e17. [PubMed](#)
14. Jin Y *et al.* 2019. *Nature communications.* 10(1):391 . [PubMed](#)
15. Walk J, *et al.* 2019. *Nat Commun.* 10:874. [PubMed](#)
16. Liu Y, *et al.* 2022. *iScience.* 25:104405. [PubMed](#)
17. Wu H, *et al.* 2022. *Biomolecules.* 12:.. [PubMed](#)
18. Wu L, *et al.* 2022. *Theranostics.* 12:842. [PubMed](#)
19. Li L, *et al.* 2015. *J Am Soc Nephrol.* 26: 2183-2197. [PubMed](#)
20. Bsat M, *et al.* 2015. *J Leukoc Biol.* 98: 671 - 681. [PubMed](#)
21. Yuan Z, *et al.* 2018. *Emerg Microbes Infect.* 7:59. [PubMed](#)
22. Cai J, *et al.* 2021. *eLife.* 10:00. [PubMed](#)
23. Singh N, *et al.* 2017. *J Endocrinol.* 235:69. [PubMed](#)
24. Yang M, *et al.* 2018. *Oncol Lett.* 15:3918. [PubMed](#)
25. Holokai L, *et al.* 2020. *Cancers (Basel).* 12:00. [PubMed](#)
26. Nazari-Shafti TZ, *et al.* 2020. *Biomolecules.* 10:00. [PubMed](#)
27. Scottà C, *et al.* 2016. *Haematologica.* 101: 91 - 100. [PubMed](#)
28. Del Alcazar D, *et al.* 2019. *Cell Rep.* 28:3047. [PubMed](#)
29. Sasano T, *et al.* 2018. *Clin Cancer Res.* 24:4018. [PubMed](#)
30. Seery V, *et al.* 2021. *EBioMedicine.* 67:103357. [PubMed](#)
31. Cho JH, *et al.* 2021. *Nat Commun.* 12:792. [PubMed](#)
32. Perera MR, *et al.* 2022. *Int J Mol Sci.* 23:.. [PubMed](#)
33. Li Z, *et al.* 2014. *PLoS One.* 9:106064. [PubMed](#)
34. Roy Chowdhury R, *et al.* 2018. *Nature.* 560:644. [PubMed](#)
35. Saraiva DP, *et al.* 2018. *Front Immunol.* 2.184027778. [PubMed](#)
36. Xu L, *et al.* 2022. *Int J Mol Sci.* 23:.. [PubMed](#)
37. Katsuyama E, *et al.* 2020. *Cell Reports.* 30(1):112-123.e4.. [PubMed](#)
38. Loo Yau H, *et al.* 2021. *STAR Protocols.* 2(2):100549. [PubMed](#)
39. Pate K, *et al.* 2015. *J Infect Dis.* 212: 1387 - 1396. [PubMed](#)
40. Johnson RK, *et al.* 2022. *Sci Rep.* 12:19920. [PubMed](#)
41. Diamantopoulos PT, *et al.* 2022. *Cancers (Basel).* 14:.. [PubMed](#)
42. Eitas T, *et al.* 2017. *PLoS One.* 10.1371/journal.pone.0184164. [PubMed](#)
43. Gorby C, *et al.* 2020. *Sci Signal.* :13. [PubMed](#)
44. Garcia EG, *et al.* 2020. *Leukemia.* 35:679. [PubMed](#)
45. Murphy DM, *et al.* 2022. *J Clin Invest.* Online ahead of print. [PubMed](#)

RRID

AB_314687 (BioLegend Cat. No. 307609)
 AB_314688 (BioLegend Cat. No. 307610)

Antigen Details

Structure	Ig superfamily, MHC class II, heterodimeric transmembrane protein, 36 kD heavy and 27 kD light chain
Distribution	B cells, activated T cells, monocytes/macrophages, dendritic cells, other APCs
Function	Peptide presentation
Ligand/Receptor	CD3/TCR, CD4

Cell Type Antigen-presenting cells, B cells, Dendritic cells, Macrophages, Monocytes, T cells, Tregs

Biology Area Immunology, Innate Immunity

Molecular Family MHC Antigens

Antigen References

1. Levacher M, *et al.* 1990. *Clin. Exp. Immunol.* 81:177.
2. Terstappen L, *et al.* 1990. *J. Leukocyte Biol.* 48:138.
3. Edwards JA, *et al.* 1986. *J. Immunol.* 137:490.
4. van Es A, *et al.* 1984. *Transplantation* 37:65.
5. O'Doherty U, *et al.* 1994. *Immunology* 82:487.
6. Thomas R, *et al.* 1994. *J. Immunol.* 153:4016.
7. Grouard G, *et al.* 1996. *Nature* 384:364.

Gene ID [3122](#)

[3123](#)

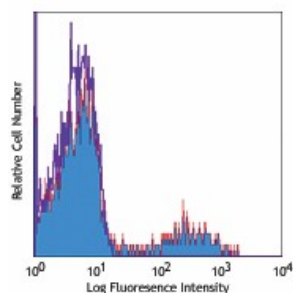
Related Protocols

[Cell Surface Flow Cytometry Staining Protocol](#)

Other Formats

APC anti-human HLA-DR, FITC anti-human HLA-DR, PE anti-human HLA-DR, PE/Cyanine5 anti-human HLA-DR, Purified anti-human HLA-DR, Biotin anti-human HLA-DR, PE/Cyanine7 anti-human HLA-DR, APC/Cyanine7 anti-human HLA-DR, Alexa Fluor® 488 anti-human HLA-DR, Alexa Fluor® 647 anti-human HLA-DR, Pacific Blue™ anti-human HLA-DR, Alexa Fluor® 700 anti-human HLA-DR, PerCP anti-human HLA-DR, PerCP/Cyanine5.5 anti-human HLA-DR, Brilliant Violet 605™ anti-human HLA-DR, Brilliant Violet 421™ anti-human HLA-DR, Brilliant Violet 570™ anti-human HLA-DR, Brilliant Violet 711™ anti-human HLA-DR, Brilliant Violet 785™ anti-human HLA-DR, Brilliant Violet 510™ anti-human HLA-DR, Ultra-LEAF™ Purified anti-human HLA-DR, Brilliant Violet 650™ anti-human HLA-DR, Purified anti-human HLA-DR (Maxpar® Ready), PE/Dazzle™ 594 anti-human HLA-DR, APC/Fire™ 750 anti-human HLA-DR, TotalSeq™-A0159 anti-human HLA-DR, TotalSeq™-B0159 anti-human HLA-DR, TotalSeq™-C0159 anti-human HLA-DR, Brilliant Violet 750™ anti-human HLA-DR, APC/Fire™ 810 anti-human HLA-DR, PE/Fire™ 640 anti-human HLA-DR, Spark Violet™ 538 anti-human HLA-DR Antibody, KIRAVIA Blue 520™ anti-human HLA-DR, TotalSeq™-D0159 anti-human HLA-DR, PE/Fire™ 810 anti-human HLA-DR, GMP PE/Dazzle™ 594 anti-human HLA-DR, Spark Violet™ 423 anti-human HLA-DR, GMP FITC anti-human HLA-DR, GMP APC anti-human HLA-DR, GMP PE/Cyanine7 anti-human HLA-DR, GMP Pacific Blue™ anti-human HLA-DR, GMP APC/Fire™ 750 anti-human HLA-DR, Spark Violet™ 500 anti-human HLA-DR

Product Data



Human peripheral blood lymphocytes stained with L243 APC

For research use only. Not for diagnostic use. Not for resale. BioLegend will not be held responsible for patent infringement or other violations that may occur with the use of our products.

*These products may be covered by one or more Limited Use Label Licenses (see the BioLegend Catalog or our website, www.biolegend.com/ordering#license). BioLegend products may not be transferred to third parties, resold, modified for resale, or used to manufacture commercial products, reverse engineer functionally similar materials, or to provide a service to third parties without written approval of BioLegend. By use of these products you accept the terms and conditions of all applicable Limited Use Label Licenses. Unless otherwise indicated, these products are for research use only and are not intended for human or animal diagnostic, therapeutic or commercial use.

BioLegend Inc., 8999 BioLegend Way, San Diego, CA 92121 www.biolegend.com
Toll-Free Phone: 1-877-Bio-Legend (246-5343) Phone: (858) 768-5800 Fax: (877) 455-9587

