

## Biotin anti-human CD11c Antibody

<b>Catalog# / Size</b>	337232 / 100 µg
<b>Clone</b>	Bu15
<b>Regulatory Status</b>	RUO
<b>Workshop</b>	V S143
<b>Other Names</b>	Integrin αx subunit, ITGAX, CR4, p150
<b>Isotype</b>	Mouse IgG1, κ
<b>Description</b>	CD11c is a 145-150 kD type I transmembrane glycoprotein also known as integrin α <sub>x</sub> and CR4. CD11c non-covalently associates with integrin β <sub>2</sub> (CD18) and is expressed on monocytes/macrophages, dendritic cells, granulocytes, NK cells, and subsets of T and B cells. CD11c has been reported to play a role in adhesion and CTL killing through its interactions with fibrinogen, CD54, and iC3b.

### Product Details

---

<b>Verified Reactivity</b>	Human
<b>Antibody Type</b>	Monoclonal
<b>Host Species</b>	Mouse
<b>Formulation</b>	Phosphate-buffered solution, pH 7.2, containing 0.09% sodium azide.
<b>Preparation</b>	The antibody was purified by affinity chromatography and conjugated with biotin under optimal conditions.
<b>Concentration</b>	0.5 mg/ml
<b>Storage &amp; Handling</b>	The antibody solution should be stored undiluted between 2°C and 8°C. <b>Do not freeze.</b>
<b>Application</b>	<a href="#">FC - Quality tested</a>
<b>Recommended Usage</b>	Each lot of this antibody is quality control tested by <a href="#">immunofluorescent staining with flow cytometric analysis</a> . For flow cytometric staining, the suggested use of this reagent is ≤0.5 µg per million cells in 100 µl volume. It is recommended that the reagent be titrated for optimal performance for each application.
<b>Application Notes</b>	Clone Bu15 has a different binding epitope than clone 3.9. The binding of Bu15 with CD11c is divalent cation independent. Additional reported applications (for the relevant formats of this clone) include: inhibition of CD11c mediated adhesion and stimulation of chemokine production by monocytes.
<b>Application References</b> (PubMed link indicates BioLegend citation)	<ol style="list-style-type: none"> <li>1. Sadhu C, <i>et al.</i> 2008. <i>J. Immunoass. Immunoch.</i> 29:42.</li> <li>2. Rezzonico R, <i>et al.</i> 2001. <i>Blood</i> 97:2932.</li> <li>3. Sadhu C, <i>et al.</i> 2007. <i>J. Leukoc. Biol.</i> 81:1395.</li> <li>4. Yoshino N, <i>et al.</i> 2000. <i>Exp. Anim. (Tokyo)</i> 49:97. (FC)</li> </ol>
<b>RRID</b>	AB_2566654 (BioLegend Cat. No. 337232)

### Antigen Details

---

<b>Structure</b>	Integrin, type I transmembrane glycoprotein, associates with integrin β <sub>2</sub> (CD18), 145-150 kD
<b>Distribution</b>	Myeloid, dendritic cells, NK cells, B cells and T cell subsets
<b>Function</b>	Adhesion, CTL killing Ligand Receptor: CD54, fibrinogen, iC3b, ICAM-1, ICAM-4 Antigen

<b>Cell Type</b>	B cells, Dendritic cells, Neutrophils, NK cells, T cells
<b>Biology Area</b>	Cell Biology, Costimulatory Molecules, Immunology, Neuroscience, Neuroscience Cell Markers
<b>Molecular Family</b>	Adhesion Molecules, CD Molecules
<b>Antigen References</b>	<ol style="list-style-type: none"> <li>1. Petty H. 1996. <i>Immunol. Today</i> 17:209.</li> <li>2. Springer T. 1994. <i>Cell</i> 76:301.</li> <li>3. Ihanus E, et al. 2007. <i>Blood</i> 109:802-810.</li> </ol>
<b>Gene ID</b>	<a href="#">3687</a>

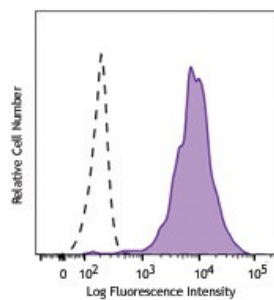
## Related Protocols

[Cell Surface Flow Cytometry Staining Protocol](#)

## Other Formats

APC/Cyanine7 anti-human CD11c, Purified anti-human CD11c, PE anti-human CD11c, APC anti-human CD11c, PerCP/Cyanine5.5 anti-human CD11c, Pacific Blue™ anti-human CD11c, FITC anti-human CD11c, PE/Cyanine7 anti-human CD11c, Alexa Fluor® 700 anti-human CD11c, Purified anti-human CD11c (Maxpar® Ready), Brilliant Violet 421™ anti-human CD11c, PE/Dazzle™ 594 anti-human CD11c, Biotin anti-human CD11c, Alexa Fluor® 647 anti-human CD11c, PerCP anti-human CD11c, Alexa Fluor® 488 anti-human CD11c, Brilliant Violet 650™ anti-human CD11c, APC/Fire™ 750 anti-human CD11c, GMP PE anti-human CD11c

## Product Data



Human peripheral blood monocytes were stained with biotinylated CD11c (clone Bu15) (filled histogram), or biotinylated mouse IgG1, κ isotype control (open histogram), followed by SAV-PE.

For research use only. Not for diagnostic use. Not for resale. BioLegend will not be held responsible for patent infringement or other violations that may occur with the use of our products.

\*These products may be covered by one or more Limited Use Label Licenses (see the BioLegend Catalog or our website, [www.biolegend.com/ordering#license](http://www.biolegend.com/ordering#license)). BioLegend products may not be transferred to third parties, resold, modified for resale, or used to manufacture commercial products, reverse engineer functionally similar materials, or to provide a service to third parties without written approval of BioLegend. By use of these products you accept the terms and conditions of all applicable Limited Use Label Licenses. Unless otherwise indicated, these products are for research use only and are not intended for human or animal diagnostic, therapeutic or commercial use.

BioLegend Inc., 8999 BioLegend Way, San Diego, CA 92121 [www.biolegend.com](http://www.biolegend.com)  
Toll-Free Phone: 1-877-Bio-Legend (246-5343) Phone: (858) 768-5800 Fax: (877) 455-9587