

Brilliant Violet 785™ anti-human CD138 (Syndecan-1) Antibody

Catalog# / Size	356537 / 25 tests 356538 / 100 tests
Clone	MI15
Regulatory Status	RUO
Workshop	HCDM listed
Other Names	B-B4
Isotype	Mouse IgG1, κ
Description	CD138, a member of the syndecan protein family, is a type I integral membrane heparin sulfate proteoglycan also known as Syndecan-1. Syndecan-1 participates in cell proliferation, cell migration, and cell-matrix adhesion via interaction with collagen, fibronectin, and other soluble molecules (such as FGF-basic). It is expressed on normal and malignant human plasma cells, pre-B cells, epithelial cells, and endothelial cells, but not on mature circulating B-lymphocytes. It is also expressed on some non-hematopoietic cells, including embryonic mesenchymal cells, vascular smooth muscle cells, endothelial cells, and neural cells.

Product Details

Verified Reactivity	Human
Antibody Type	Monoclonal
Host Species	Mouse
Immunogen	A mixture of U266 and XG-1 human myeloma cell lines.
Formulation	Phosphate-buffered solution, pH 7.2, containing 0.09% sodium azide and BSA (origin USA).
Preparation	The antibody was purified by affinity chromatography and conjugated with Brilliant Violet 785™ under optimal conditions.
Concentration	Lot-specific (to obtain lot-specific concentration, please enter the lot number in our Concentration and Expiration Lookup or Certificate of Analysis online tools.)
Storage & Handling	The antibody solution should be stored undiluted between 2°C and 8°C, and protected from prolonged exposure to light. Do not freeze.
Application	FC - Quality tested
Recommended Usage	Each lot of this antibody is quality control tested by immunofluorescent staining with flow cytometric analysis . For flow cytometric staining, the suggested use of this reagent is 5 µl per million cells in 100 µl staining volume or 5 µl per 100 µl of whole blood. Learn more about Brilliant Violet™. This product is subject to proprietary rights of Sirigen Inc. and is made and sold under license from Sirigen Inc. The purchase of this product conveys to the buyer a non-transferable right to use the purchased product for research purposes only. This product may not be resold or incorporated in any manner into another product for resale. Any use for therapeutics or diagnostics is strictly prohibited. This product is covered by U.S. Patent(s), pending patent applications and foreign equivalents.
Excitation Laser	Violet Laser (405 nm)
Application Notes	The epitope recognized by MI15 is found within the ectodomain of the CD138 core protein. It has been reported that MI15 blocks the binding of clone B-B4 but not clone DL-101 by flow cytometric analysis. Clones DL-101 and MI15 exhibit differential staining patterns on <i>in vitro</i> generated plasma cells and some CD138 ⁺ cell lines. ⁴ Additional reported applications for the relevant formats include: immunofluorescent staining ¹ , Western blotting ² , immunohistochemical staining of formalin-fixed paraffin-embedded frozen tissue

sections³, and spatial biology (IBEX)^{5,6}.

Application References

(PubMed link indicates BioLegend citation)

1. Costes V, *et al.* 1999. *Hum. Pathol.* 30:1405. (IF)
2. Gattei V, *et al.* 1999. *Br. J. Haematol.* 104:152. (WB)
3. Bologna-Molina R, *et al.* 2008. *Oral Oncol.* 44:805. (IHC)
4. Itoua MR, *et al.* 2014. *Biomed. Res. Int.* 2014:536482.
5. Radtke AJ, *et al.* 2020. *Proc Natl Acad Sci USA.* 117:33455-33465. (SB) [PubMed](#)
6. Radtke AJ, *et al.* 2022. *Nat Protoc.* 17:378-401. (SB) [PubMed](#)

Product Citations

1. Karim F, *et al.* 2021. *Elife.* 10:.. [PubMed](#)

RRID

AB_2800965 (BioLegend Cat. No. 356537)
AB_2800966 (BioLegend Cat. No. 356538)

Antigen Details

Structure	100-200 kD type I integral transmembrane glycoprotein
Distribution	Plasma cells, pre-B cells, epithelial cells, endothelial cells
Function	Adhesion, controls cell morphology, regulates cell growth
Ligand/Receptor	FGFb, collagen, fibronectin
Cell Type	B cells, Endothelial cells, Epithelial cells, Plasma cells
Biology Area	Cell Adhesion, Cell Biology, Cell Motility/Cytoskeleton/Structure, Immunology, Neuroscience, Synaptic Biology
Molecular Family	Adhesion Molecules, CD Molecules
Antigen References	<ol style="list-style-type: none">1. Sanderson RD, <i>et al.</i> 1992. <i>Cell. Regul.</i> 1:27.2. Zola H, <i>et al.</i> 2007. <i>Leukocyte and Stromal Cell Molecules: The CD Markers.</i> Wiley-Liss A John Wiley & Sons Inc, Publication.
Gene ID	6382

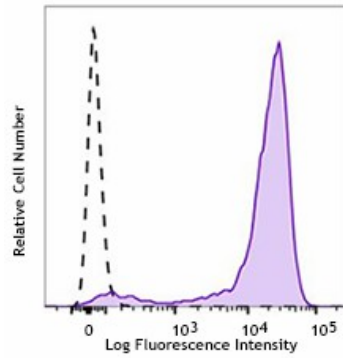
Related Protocols

[Cell Surface Flow Cytometry Staining Protocol](#)

Other Formats

PE anti-human CD138 (Syndecan-1), Purified anti-human CD138 (Syndecan-1), APC anti-human CD138 (Syndecan-1), FITC anti-human CD138 (Syndecan-1), PerCP/Cyanine5.5 anti-human CD138 (Syndecan-1), Alexa Fluor® 700 anti-human CD138 (Syndecan-1), PE/Cyanine7 anti-human CD138 (Syndecan-1), Brilliant Violet 421™ anti-human CD138 (Syndecan-1), Brilliant Violet 510™ anti-human CD138 (Syndecan-1), Brilliant Violet 605™ anti-human CD138 (Syndecan-1), Brilliant Violet 711™ anti-human CD138 (Syndecan-1), Alexa Fluor® 647 anti-human CD138 (Syndecan-1), Alexa Fluor® 594 anti-human CD138 (Syndecan-1), PE/Dazzle™ 594 anti-human CD138 (Syndecan-1), APC/Cyanine7 anti-human CD138 (Syndecan-1), Pacific Blue™ anti-human CD138 (Syndecan-1), TotalSeq™-A0055 anti-human CD138 (Syndecan-1), Brilliant Violet 785™ anti-human CD138 (Syndecan-1), Biotin anti-human CD138 (Syndecan-1), TotalSeq™-C0055 anti-human CD138 (Syndecan-1), APC/Fire™ 750 anti-human CD138 (Syndecan-1), TotalSeq™-B0055 anti-human CD138 (Syndecan-1), PE/Cyanine5 anti-human CD138 (Syndecan-1), TotalSeq™-D0055 anti-human CD138 (Syndecan-1), PE/Fire™ 640 anti-human CD138 (Syndecan-1), Spark Violet™ 500 anti-human CD138 (Syndecan-1)

Product Data



Human myeloma cell line U266 was stained with CD138 (clone M115) Brilliant Violet 785™ (filled histogram) or mouse IgG1, κ Brilliant Violet 785™ isotype control (open histogram).

For research use only. Not for diagnostic use. Not for resale. BioLegend will not be held responsible for patent infringement or other violations that may occur with the use of our products.

*These products may be covered by one or more Limited Use Label Licenses (see the BioLegend Catalog or our website, www.biolegend.com/ordering#license). BioLegend products may not be transferred to third parties, resold, modified for resale, or used to manufacture commercial products, reverse engineer functionally similar materials, or to provide a service to third parties without written approval of BioLegend. By use of these products you accept the terms and conditions of all applicable Limited Use Label Licenses. Unless otherwise indicated, these products are for research use only and are not intended for human or animal diagnostic, therapeutic or commercial use.

BioLegend Inc., 8999 BioLegend Way, San Diego, CA 92121 www.biolegend.com
Toll-Free Phone: 1-877-Bio-Legend (246-5343) Phone: (858) 768-5800 Fax: (877) 455-9587