

## Brilliant Violet 785™ anti-human CD15 (SSEA-1) Antibody

<b>Catalog# / Size</b>	323043 / 25 tests 323044 / 100 tests
<b>Clone</b>	W6D3
<b>Regulatory Status</b>	RUO
<b>Workshop</b>	HCDM listed
<b>Other Names</b>	Lewis X, 3-FAL, 3-FL, LNFP III, Lex , SSEA-1, X-hapten
<b>Isotype</b>	Mouse IgG1, κ
<b>Description</b>	CD15 is 3-fucosyl-N-acetylglucosamine (3-FAL) also known as Lewis X, 3-FAL, X-hapten, and SSEA-1. CD15 is expressed on granulocytes and monocytes. It has also been shown to be expressed on Langerhans cells. CD15 has been implicated in adhesion as well as chemotaxis, phagocytosis, and bactericidal activity.

### Product Details

---

<b>Verified Reactivity</b>	Human
<b>Antibody Type</b>	Monoclonal
<b>Host Species</b>	Mouse
<b>Immunogen</b>	WERI-RB-1 retinoblastoma cell line
<b>Formulation</b>	Phosphate-buffered solution, pH 7.2, containing 0.09% sodium azide and BSA (origin USA).
<b>Preparation</b>	The antibody was purified by affinity chromatography and conjugated with Brilliant Violet 785™ under optimal conditions.
<b>Concentration</b>	Lot-specific (to obtain lot-specific concentration, please enter the lot number in our <a href="#">Concentration and Expiration Lookup</a> or <a href="#">Certificate of Analysis</a> online tools.)
<b>Storage &amp; Handling</b>	The antibody solution should be stored undiluted between 2°C and 8°C, and protected from prolonged exposure to light. <b>Do not freeze.</b>
<b>Application</b>	<a href="#">FC - Quality tested</a>
<b>Recommended Usage</b>	<p>Each lot of this antibody is quality control tested by <a href="#">immunofluorescent staining with flow cytometric analysis</a>. For flow cytometric staining, the suggested use of this reagent is 5 µl per million cells in 100 µl staining volume or 5 µl per 100 µl of whole blood.</p> <p>Brilliant Violet 785™ excites at 405 nm and emits at 785 nm. The bandpass filter 780/60 nm is recommended for detection, although filter optimization may be required depending on other fluorophores used. Be sure to verify that your cytometer configuration and software setup are appropriate for detecting this channel. Refer to your instrument manual or manufacturer for support. Brilliant Violet 785™ is a trademark of Sirigen Group Ltd.</p> <p><a href="#">Learn more about Brilliant Violet™.</a></p> <p>This product is subject to proprietary rights of Sirigen Inc. and is made and sold under license from Sirigen Inc. The purchase of this product conveys to the buyer a non-transferable right to use the purchased product for research purposes only. This product may not be resold or incorporated in any manner into another product for resale. Any use for therapeutics or diagnostics is strictly prohibited. This product is covered by U.S. Patent(s), pending patent applications and foreign equivalents.</p>
<b>Excitation Laser</b>	Violet Laser (405 nm)
<b>Product Citations</b>	1. Wang T, <i>et al.</i> 2021. Cell Stem Cell. 28(6):1074-1089.e7. <a href="#">PubMed</a>
<b>RRID</b>	AB_2632920 (BioLegend Cat. No. 323043)

## Antigen Details

<b>Structure</b>	Poly-N-acetyllactosamine
<b>Distribution</b>	Neutrophils, eosinophils, monocytes
<b>Function</b>	Adhesion
<b>Cell Type</b>	Embryonic Stem Cells, Eosinophils, Neutrophils
<b>Biology Area</b>	Cell Biology, Immunology, Neuroscience, Neuroscience Cell Markers, Stem Cells
<b>Molecular Family</b>	CD Molecules
<b>Antigen References</b>	1. Stocks SC, <i>et al.</i> 1990. <i>Biochem. J.</i> 268:275.
<b>Gene ID</b>	<a href="#">2526</a>

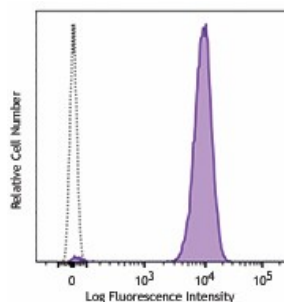
## Related Protocols

[Cell Surface Flow Cytometry Staining Protocol](#)

## Other Formats

Brilliant Violet 785™ anti-human CD15 (SSEA-1), Purified anti-human CD15 (SSEA-1), FITC anti-human CD15 (SSEA-1), PE anti-human CD15 (SSEA-1), APC anti-human CD15 (SSEA-1), Alexa Fluor® 488 anti-human CD15 (SSEA-1), Alexa Fluor® 647 anti-human CD15 (SSEA-1), PE/Cyanine5 anti-human CD15 (SSEA-1), PerCP anti-human CD15 (SSEA-1), PerCP/Cyanine5.5 anti-human CD15 (SSEA-1), Pacific Blue™ anti-human CD15 (SSEA-1), Alexa Fluor® 700 anti-human CD15 (SSEA-1), Brilliant Violet 510™ anti-human CD15 (SSEA-1), PE/Cyanine7 anti-human CD15 (SSEA-1), Brilliant Violet 605™ anti-human CD15 (SSEA-1), Brilliant Violet 650™ anti-human CD15 (SSEA-1), Purified anti-human CD15 (SSEA-1) (Maxpar® Ready), PE/Dazzle™ 594 anti-human CD15 (SSEA-1), Brilliant Violet 421™ anti-human CD15 (SSEA-1), APC/Fire™ 750 anti-human CD15 (SSEA-1), TotalSeq™-A0392 anti-human CD15 (SSEA-1), Brilliant Violet 711™ anti-human CD15 (SSEA-1), APC/Cyanine7 anti-human CD15 (SSEA-1), TotalSeq™-B0392 anti-human CD15 (SSEA-1), TotalSeq™-C0392 anti-human CD15 (SSEA-1), APC/Fire™ 810 anti-human CD15 (SSEA-1) Antibody, TotalSeq™-D0392 anti-human CD15 (SSEA-1), GMP FITC anti-human CD15 (SSEA-1), Spark YG™ 593 anti-human CD15 (SSEA-1), GMP PE anti-human CD15 (SSEA-1), GMP Pacific Blue™ anti-human CD15 (SSEA-1)

## Product Data



Human peripheral blood granulocytes were stained with CD15 (clone W6D3) Brilliant Violet 785™ (filled histogram) or mouse IgG1, κ Brilliant Violet 785™ isotype control (open histogram).

For research use only. Not for diagnostic use. Not for resale. BioLegend will not be held responsible for patent infringement or other violations that may occur with the use of our products.

\*These products may be covered by one or more Limited Use Label Licenses (see the BioLegend Catalog or our website, [www.biolegend.com/ordering#license](http://www.biolegend.com/ordering#license)). BioLegend products may not be transferred to third parties, resold, modified for resale, or used to manufacture commercial products, reverse engineer functionally similar materials, or to provide a service to third parties without written approval of BioLegend. By use of these products you accept the terms and conditions of all applicable Limited Use Label Licenses. Unless otherwise indicated, these products are for research use only and are not intended for human or animal diagnostic, therapeutic or commercial use.

