

Pacific Blue™ anti-human CD235ab Antibody

| | |
|--------------------------|---|
| Catalog# / Size | 306611 / 25 µg 306612 / 100 µg |
| Clone | HIR2 |
| Regulatory Status | RUO |
| Workshop | VII 70299 |
| Other Names | Glycophorin A/B, GPA/GPB |
| Isotype | Mouse IgG2b, κ |
| Description | The HIR2 antibody reacts with a common epitope of glycophorin A (CD235a) and glycophorin B (CD235b). Glycophorin A is the major sialoglycoprotein expressed on red blood cell membrane, and erythroid precursors. Glycophorin A shares strong homology with glycophorin B. The HIR2 antibody recognizes human RBCs and erythroid precursors and is useful in erythroid cell development studies. Mature, non-nucleated red blood cells are characteristically glycophorin A positive, but CD45 and CD71 negative. |

Product Details

| | |
|---|---|
| Verified Reactivity | Human |
| Reported Reactivity | African Green, Baboon |
| Antibody Type | Monoclonal |
| Host Species | Mouse |
| Formulation | Phosphate-buffered solution, pH 7.2, containing 0.09% sodium azide. |
| Preparation | The antibody was purified by affinity chromatography, and conjugated with Pacific Blue™ under optimal conditions. |
| Concentration | 0.5 mg/ml |
| Storage & Handling | The antibody solution should be stored undiluted between 2°C and 8°C, and protected from prolonged exposure to light. Do not freeze. |
| Application | FC - Quality tested |
| Recommended Usage | <p>Each lot of this antibody is quality control tested by immunofluorescent staining with flow cytometric analysis. For flow cytometric staining, the suggested use of this reagent is ≤ 0.015 µg per 10⁶ cells in 100 µl volume or 100 µl of whole blood. It is recommended that the reagent be titrated for optimal performance for each application.</p> <p>* Pacific Blue™ has a maximum emission of 455 nm when it is excited at 405 nm. Prior to using Pacific Blue™ conjugate for flow cytometric analysis, please verify your flow cytometer's capability of exciting and detecting the fluorochrome.</p> <p>Alexa Fluor® and Pacific Blue™ are trademarks of Life Technologies Corporation.</p> <p>View full statement regarding label licenses</p> |
| Excitation Laser | Violet Laser (405 nm) |
| Application References | 1. Mason D, <i>et al.</i> Eds. 2002. Leucocyte Typing VII. Oxford University Press. New York. |
| (PubMed link indicates BioLegend citation) | |
| Product Citations | 1. Goodnough LH, <i>et al.</i> 2020. JBMR Plus. 4:e10398. PubMed 2. Rothe K, <i>et al.</i> 2020. Cell Stem Cell. 27(1):110-124.e9. PubMed 3. Ambrosi TH, <i>et al.</i> 2020. Aging Cell. 19:e13164. PubMed |

- Ito Y, *et al.* 2018. Cell. 174:636. [PubMed](#)
- Ochi K, *et al.* 2014. Stem Cells Trans Med. 3:792. [PubMed](#)
- Pauken CM, *et al.* 2021. Cancers (Basel). 13:. [PubMed](#)

RRID AB_2248153 (BioLegend Cat. No. 306611)
AB_2116241 (BioLegend Cat. No. 306612)

Antigen Details

| | |
|---------------------------|---|
| Structure | Sialoglycoprotein, 20 kD |
| Distribution | Erythrocytes |
| Cell Type | Erythrocytes |
| Biology Area | Immunology |
| Molecular Family | CD Molecules |
| Antigen References | 1. Mason D, <i>et al.</i> Eds. 2002. Leucocyte Typing VII. Oxford University Press. New York. |
| Gene ID | 2993 |

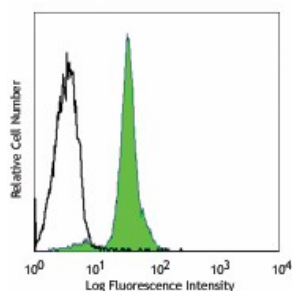
Related Protocols

[Cell Surface Flow Cytometry Staining Protocol](#)

Other Formats

APC anti-human CD235ab, PE anti-human CD235ab, PE/Cyanine5 anti-human CD235ab, Purified anti-human CD235ab, FITC anti-human CD235ab, Pacific Blue™ anti-human CD235ab, PerCP/Cyanine5.5 anti-human CD235ab, Purified anti-human CD235ab (Maxpar® Ready), Biotin anti-human CD235ab, PE/Cyanine7 anti-human CD235ab, APC/Fire™ 750 anti-human CD235ab, TotalSeq™-A0196 anti-human CD235ab, TotalSeq™-C0196 anti-human CD235ab, TotalSeq™-B0196 anti-human CD235ab, TotalSeq™-D0196 anti-human CD235ab

Product Data



Human erythrocytes stained with HIR2 Pacific Blue™

For research use only. Not for diagnostic use. Not for resale. BioLegend will not be held responsible for patent infringement or other violations that may occur with the use of our products.

*These products may be covered by one or more Limited Use Label Licenses (see the BioLegend Catalog or our website, www.biolegend.com/ordering#license). BioLegend products may not be transferred to third parties, resold, modified for resale, or used to manufacture commercial products, reverse engineer functionally similar materials, or to provide a service to third parties without written approval of BioLegend. By use of these products you accept the terms and conditions of all applicable Limited Use Label Licenses. Unless otherwise indicated, these products are for research use only and are not intended for human or animal diagnostic, therapeutic or commercial use.

BioLegend Inc., 8999 BioLegend Way, San Diego, CA 92121 www.biolegend.com
Toll-Free Phone: 1-877-Bio-Legend (246-5343) Phone: (858) 768-5800 Fax: (877) 455-9587

