

Pacific Blue™ anti-human CD25 Antibody

Catalog# / Size	302620 / 100 µg 302627 / 100 tests
Clone	BC96
Regulatory Status	RUO
Workshop	V T-072
Other Names	Low affinity IL-2R, IL-2R α chain, Tac, p55
Isotype	Mouse IgG1, κ
Description	CD25 is a 55 kD type I transmembrane glycoprotein also known as the low affinity IL-2 receptor α chain or Tac. It is expressed on progenitor lymphocytes, activated T and B cells, and activated monocytes/macrophages. CD25 is also expressed on a subset of non-stimulated CD4 ⁺ T cells termed T regulatory cells. CD25 associates with the IL-2 receptor β (CD122) and common γ chains (CD132) to form the high affinity IL-2R complex.

Product Details

Verified Reactivity	Human
Reported Reactivity	Baboon, Chimpanzee, Cynomolgus, Pigtailed Macaque, Rhesus
Antibody Type	Monoclonal
Host Species	Mouse
Formulation	test size: Phosphate-buffered solution, pH 7.2, containing 0.09% sodium azide and BSA (origin USA). µg sizes: Phosphate-buffered solution, pH 7.2, containing 0.09% sodium azide.
Preparation	The antibody was purified by affinity chromatography, and conjugated with Pacific Blue™ under optimal conditions.
Concentration	test size: lot-specific; µg sizes: 0.5 mg/ml
Storage & Handling	The antibody solution should be stored undiluted between 2°C and 8°C, and protected from prolonged exposure to light. Do not freeze.
Application	FC - Quality tested
Recommended Usage	Each lot of this antibody is quality control tested by immunofluorescent staining with flow cytometric analysis . For test size , the suggested use of this reagent for immunofluorescent staining is 5 µl per 10 ⁶ cells in 100 µl volume. For µg sizes , the suggested use of this reagent for immunofluorescent staining is ≤1.0 µg per 10 ⁶ cells in 100 µl volume. It is recommended that the reagent be titrated for optimal performance for each application. * Pacific Blue™ has a maximum emission of 455 nm when it is excited at 405 nm. Prior to using Pacific Blue™ conjugate for flow cytometric analysis, please verify your flow cytometer's capability of exciting and detecting the fluorochrome. Alexa Fluor® and Pacific Blue™ are trademarks of Life Technologies Corporation. View full statement regarding label licenses
Excitation Laser	Violet Laser (405 nm)
Application Notes	Additional reported applications include: immunocytochemistry ³ .
Application References	1. Schlossman S, <i>et al.</i> Eds. 1995. Leucocyte Typing V. Oxford University Press. New York. 2. Kmiecik M, <i>et al.</i> 2009. <i>J. Transl. Med.</i> 7:89. (FC) PubMed
(PubMed link indicates	

BioLegend citation) 3. Ernst CW, *et al.* 2007. *Clin. Exp. Immunol.* 148:271. (ICC) [PubMed](#)

Product Citations

1. Olwenyi OA, *et al.* 2020. *Cells.* 9:. [PubMed](#)
2. Pagel J, *et al.* 2020. *Front Immunol.* 11:565257. [PubMed](#)
3. Jager P, *et al.* 2009. *Proc Natl Acad Sci U S A.* 106:5264. [PubMed](#)
4. Wallace JG, *et al.* 2021. *J Allergy Clin Immunol.* 147:743. [PubMed](#)
5. Blackburn M, *et al.* 2015. *J Immunol.* 195: 3227 - 3236. [PubMed](#)

RRID AB_493649 (BioLegend Cat. No. 302620)
AB_2233706 (BioLegend Cat. No. 302627)

Antigen Details

Structure	Type I transmembrane glycoprotein, 55 kD
Distribution	Activated T cells and B cells, monocytes/macrophages, Treg
Function	Associates with IL-2 receptor β (CD122) and γ chains (CD132) to form high affinity IL-2R complex
Ligand/Receptor	IL-2
Cell Type	B cells, Macrophages, Monocytes, T cells, Tregs
Biology Area	Cell Biology, Immunology, Neuroscience, Neuroscience Cell Markers
Molecular Family	CD Molecules, Cytokine/Chemokine Receptors
Antigen References	1. Taniguchi T, <i>et al.</i> 1993. <i>Cell</i> 73:5. 2. Waldmann T. 1991. <i>J. Biol. Chem.</i> 266:2681.
Gene ID	3559

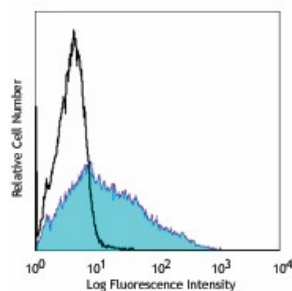
Related Protocols

[Cell Surface Flow Cytometry Staining Protocol](#)

Other Formats

APC anti-human CD25, FITC anti-human CD25, PE anti-human CD25, PE/Cyanine5 anti-human CD25, Purified anti-human CD25, APC/Cyanine7 anti-human CD25, PE/Cyanine7 anti-human CD25, Alexa Fluor® 488 anti-human CD25, Alexa Fluor® 647 anti-human CD25, Pacific Blue™ anti-human CD25, Alexa Fluor® 700 anti-human CD25, Biotin anti-human CD25, PerCP/Cyanine5.5 anti-human CD25, Brilliant Violet 421™ anti-human CD25, Brilliant Violet 605™ anti-human CD25, Brilliant Violet 650™ anti-human CD25, Brilliant Violet 711™ anti-human CD25, Brilliant Violet 785™ anti-human CD25, Brilliant Violet 510™ anti-human CD25, APC/Fire™ 750 anti-human CD25, TotalSeq™-A0085 anti-human CD25, PE/Dazzle™ 594 anti-human CD25, TotalSeq™-B0085 anti-human CD25, TotalSeq™-C0085 anti-human CD25, TotalSeq™-D0085 anti-human CD25

Product Data



PHA-stimulated (3 day) human peripheral blood lymphocytes were stained with CD25 (clone BC96) Pacific Blue™ (filled histogram) or mouse IgG1, κ Pacific Blue™ isotype control (open histogram).

For research use only. Not for diagnostic use. Not for resale. BioLegend will not be held responsible for patent infringement or other violations that may occur with the use of our products.

*These products may be covered by one or more Limited Use Label Licenses (see the BioLegend Catalog or our website, www.biolegend.com/ordering#license). BioLegend products may not be transferred to third parties, resold, modified for resale, or used to manufacture commercial products, reverse engineer functionally similar materials, or to provide a service to third parties without written approval of BioLegend. By use of these products you accept the terms and conditions of all applicable Limited Use Label Licenses. Unless otherwise indicated, these products are for research use only and are not intended for human or animal diagnostic, therapeutic or commercial use.

BioLegend Inc., 8999 BioLegend Way, San Diego, CA 92121 www.biolegend.com
Toll-Free Phone: 1-877-Bio-Legend (246-5343) Phone: (858) 768-5800 Fax: (877) 455-9587