

Pacific Blue™ anti-human CD279 (PD-1) Antibody

Catalog# / Size	329915 / 25 µg 329916 / 100 µg
Clone	EH12.2H7
Regulatory Status	RUO
Other Names	PD-1
Isotype	Mouse IgG1, κ
Description	Programmed cell death 1 (PD-1), also known as CD279, is a 55 kD member of the immunoglobulin superfamily. CD279 contains the immunoreceptor tyrosine-based inhibitory motif (ITIM) in the cytoplasmic region and plays a key role in peripheral tolerance and autoimmune disease. CD279 is expressed predominantly on activated T cells, B cells, and myeloid cells. PD-L1 (B7-H1) and PD-L2 (B7-DC) are ligands of CD279 (PD-1) and are members of the B7 gene family. Evidence suggests overlapping functions for these two PD-1 ligands and their constitutive expression on some normal tissues and upregulation on activated antigen-presenting cells. Interaction of CD279 ligands results in inhibition of T cell proliferation and cytokine secretion.

Product Details

Verified Reactivity	Human
Reported Reactivity	African Green, Baboon, Chimpanzee, Common Marmoset, Cynomolgus, Rhesus, Squirrel Monkey
Antibody Type	Monoclonal
Host Species	Mouse
Formulation	Phosphate-buffered solution, pH 7.2, containing 0.09% sodium azide.
Preparation	The antibody was purified by affinity chromatography, and conjugated with Pacific Blue™ under optimal conditions.
Concentration	0.5 mg/ml
Storage & Handling	The antibody solution should be stored undiluted between 2°C and 8°C, and protected from prolonged exposure to light. Do not freeze.
Application	FC - Quality tested
Recommended Usage	Each lot of this antibody is quality control tested by immunofluorescent staining with flow cytometric analysis . For flow cytometric staining, the suggested use of this reagent is ≤ 1.0µg per 10 ⁶ cells in 100 µl volume or 100 µl of whole blood. It is recommended that the reagent be titrated for optimal performance for each application. * Pacific Blue™ has a maximum emission of 455 nm when it is excited at 405 nm. Prior to using Pacific Blue™ conjugate for flow cytometric analysis, please verify your flow cytometer's capability of exciting and detecting the fluorochrome. Alexa Fluor® and Pacific Blue™ are trademarks of Life Technologies Corporation. View full statement regarding label licenses
Excitation Laser	Violet Laser (405 nm)
Application Notes	Additional reported applications (for the relevant formats) include: blocking of ligand binding ¹⁻³ , immunohistochemical staining of paraformaldehyde fixed frozen sections ¹³ , and spatial biology (IBEX) ^{15,16} . The LEAF™ purified antibody (Endotoxin <0.1 EU/µg, Azide-Free, 0.2 µm filtered) is recommended for functional assays (Cat. No. 329911 and 329912). For highly sensitive assays, we recommend Ultra-LEAF™ purified antibody (Cat. No. 329926) with a lower endotoxin limit than standard LEAF™ purified antibodies (Endotoxin <0.01 EU/µg).
Application References	

**(PubMed link indicates
BioLegend citation)**

1. Dorfman DM, *et al.* 2006 *Am. J. Surg. Pathol.* 30:802. (FA)
2. Radziejcz H, *et al.* 2007. *J. Virol.* 81:2545. (FA)
3. Velu V, *et al.* 2007. *J. Virol.* 81:5819. (FA)
4. Zahn RC, *et al.* 2008. *J. Virol.* 82:11577. [PubMed](#)
5. Chang WS, *et al.* 2008. *J. Immunol.* 181:6707. (FC) [PubMed](#)
6. Nakamoto N, *et al.* 2009. *PLoS Pathog.* 5:e1000313. (FA)
7. Jones RB, *et al.* 2009. *J. Virol.* 83:8722. (FC) [PubMed](#)
8. Vojnov L, *et al.* 2010. *J. Virol.* 84:753. (FC) [PubMed](#)
9. Radziejcz H, *et al.* 2010. *J. Immunol.* 184:2410. (FC) [PubMed](#)
10. Montero P, *et al.* 2011. *J. Immunol.* 186:4618. [PubMed](#)
11. Conrad J, *et al.* 2011. *J. Immunol.* 186:6871. [PubMed](#)
12. Salisch NC, *et al.* 2010. *J. Immunol.* 184:476. (Rhesus reactivity)
13. Li H and Pauza CD. 2015. *Eur. J. Immunol.* 45:298. (IHC)
14. Peterson VM, *et al.* 2017. *Nat. Biotechnol.* 35:936. (PG)
15. Radtke AJ, *et al.* 2020. *Proc Natl Acad Sci USA.* 117:33455-33465. (SB) [PubMed](#)
16. Radtke AJ, *et al.* 2022. *Nat Protoc.* 17:378-401. (SB) [PubMed](#)

Product Citations

1. Sampedro-Núñez M, *et al.* 2018. *Sci Rep.* 8:17812. [PubMed](#)
2. Xu X, *et al.* 2021. *Elife.* 10: [PubMed](#)
3. Reustle A, *et al.* 2022. *Clin Transl Med.* 12:e883. [PubMed](#)
4. Li P, *et al.* 2022. *Front Oncol.* 12:917400. [PubMed](#)
5. Lu E, *et al.* 2019. *Nature.* 567:244. [PubMed](#)
6. Zhao Y *et al.* 2018. *Cell reports.* 24(2):379-390. [PubMed](#)
7. Subudhi S, *et al.* 2016. *Proc Natl Acad Sci U S A.* 113: 11919 - 11924. [PubMed](#)
8. Kathamuthu GR, *et al.* 2021. *Front Cell Infect Microbiol.* 11:756854. [PubMed](#)
9. Hamdan F, *et al.* 2021. *Journal for ImmunoTherapy of Cancer.* 9(8): [PubMed](#)

RRID

AB_1877194 (BioLegend Cat. No. 329915)
AB_2283437 (BioLegend Cat. No. 329916)

Antigen Details

Structure	Immunoglobulin superfamily
Distribution	Transiently expressed on CD4 ⁺ CD8 ⁻ thymocytes; upregulated in thymocytes and splenic T and B lymphocytes; expressed on activated myeloid cells
Ligand/Receptor	B7-H1 (also known as PD-L1) and B7-DC (PD-L2)
Cell Type	B cells, Lymphocytes, T cells, Thymocytes, Tregs
Biology Area	Cancer Biomarkers, Immunology, Inhibitory Molecules
Molecular Family	CD Molecules, Immune Checkpoint Receptors
Gene ID	5133

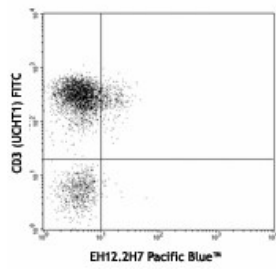
Related Protocols

[Cell Surface Flow Cytometry Staining Protocol](#)

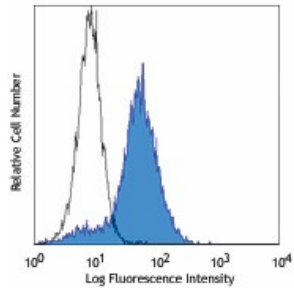
Other Formats

Brilliant Violet 421™ anti-human CD279 (PD-1), Purified anti-human CD279 (PD-1), FITC anti-human CD279 (PD-1), PE anti-human CD279 (PD-1), APC anti-human CD279 (PD-1), Alexa Fluor® 647 anti-human CD279 (PD-1), PerCP/Cyanine5.5 anti-human CD279 (PD-1), APC/Cyanine7 anti-human CD279 (PD-1), Pacific Blue™ anti-human CD279 (PD-1), PE/Cyanine7 anti-human CD279 (PD-1), Purified anti-human CD279 (PD-1) (Maxpar® Ready), Brilliant Violet 605™ anti-human CD279 (PD-1), Ultra-LEAF™ Purified anti-human CD279 (PD-1), Brilliant Violet 711™ anti-human CD279 (PD-1), Brilliant Violet 785™ anti-human CD279 (PD-1), Brilliant Violet 510™ anti-human CD279 (PD-1), Biotin anti-human CD279 (PD-1), PE/Dazzle™ 594 anti-human CD279 (PD-1), Alexa Fluor® 488 anti-human CD279 (PD-1), PerCP anti-human CD279 (PD-1), GolnVivo™ Purified anti-human CD279 (PD-1), Brilliant Violet 650™ anti-human CD279 (PD-1), Alexa Fluor® 700 anti-human CD279 (PD-1), APC/Fire™ 750 anti-human CD279 (PD-1), TotalSeq™-A0088 anti-human CD279 (PD-1), TotalSeq™-B0088 anti-human CD279 (PD-1), TotalSeq™-C0088 anti-human CD279 (PD-1), Brilliant Violet 750™ anti-human CD279 (PD-1), TotalSeq™-D0088 anti-human CD279 (PD-1), PE/Fire™ 640 anti-human CD279 (PD-1), PE/Cyanine5 anti-human CD279 (PD-1)

Product Data



Human peripheral blood lymphocytes were stained with CD279 (clone EH12.2H7) Pacific Blue™ and CD3 (clone UCHT1) FITC.



PHA-stimulated (day-3) human peripheral blood lymphocytes were stained with CD279 (clone EH12.2H7) Pacific Blue™ (filled histogram) or mouse IgG1, κ Pacific Blue™ (open histogram).

For research use only. Not for diagnostic use. Not for resale. BioLegend will not be held responsible for patent infringement or other violations that may occur with the use of our products.

*These products may be covered by one or more Limited Use Label Licenses (see the BioLegend Catalog or our website, www.biolegend.com/ordering#license). BioLegend products may not be transferred to third parties, resold, modified for resale, or used to manufacture commercial products, reverse engineer functionally similar materials, or to provide a service to third parties without written approval of BioLegend. By use of these products you accept the terms and conditions of all applicable Limited Use Label Licenses. Unless otherwise indicated, these products are for research use only and are not intended for human or animal diagnostic, therapeutic or commercial use.

BioLegend Inc., 8999 BioLegend Way, San Diego, CA 92121 www.biolegend.com
 Toll-Free Phone: 1-877-Bio-Legend (246-5343) Phone: (858) 768-5800 Fax: (877) 455-9587