

PE anti-human CD339 (Jagged 1) Antibody

| | |
|--------------------------|---|
| Catalog# / Size | 399107 / 25 tests 399108 / 100 tests |
| Clone | W16199B |
| Regulatory Status | RUO |
| Other Names | JAG1/Jagged1 |
| Isotype | Rat IgG2a, κ |
| Description | CD339, also known as Jagged 1, is a 135 kDa type 1 transmembrane protein with one DSL (Delta, Serrate, LagZ) domain, fifteen EGF-like domains, and one cysteine-rich region. Jagged 1 is expressed by many cell types including macrophages, subsets of dendritic cells, astrocytes, stromal, and epithelial cells. Jagged 1 regulates cell fate decisions in various tissues, and has an important role in neurogenesis and development of the cardiovascular system. Some studies suggest Jagged 1 is also involved in Th2 polarization and Treg induction. |

Product Details

| | |
|-------------------------------|---|
| Verified Reactivity | Human |
| Antibody Type | Monoclonal |
| Host Species | Rat |
| Immunogen | Human Jagged-transfected RBL1 cells |
| Formulation | Phosphate-buffered solution, pH 7.2, containing 0.09% sodium azide and BSA (origin USA) |
| Preparation | The antibody was purified by affinity chromatography and conjugated with PE under optimal conditions. |
| Concentration | Lot-specific (to obtain lot-specific concentration, please enter the lot number in our Concentration and Expiration Lookup or Certificate of Analysis online tools.) |
| Storage & Handling | The antibody solution should be stored undiluted between 2°C and 8°C, and protected from prolonged exposure to light. Do not freeze. |
| Application | FC - Quality tested |
| Recommended Usage | Each lot of this antibody is quality control tested by immunofluorescent staining with flow cytometric analysis . For flow cytometric staining, the suggested use of this reagent is 5 µL per million cells in 100 µL staining volume or 5 µL per 100 µL of whole blood. It is recommended that the reagent be titrated for optimal performance for each application. |
| Excitation Laser | Blue Laser (488 nm) Green Laser (532 nm)/Yellow-Green Laser (561 nm) |
| RRID | AB_2894540 (BioLegend Cat. No. 399107) AB_2894540 (BioLegend Cat. No. 399108) |

Antigen Details

| | |
|------------------------|---|
| Structure | A 135 kD type 1 transmembrane protein with 1 DSL domain, 15 EGF-like domain and 1 cysteine-rich region. |
| Distribution | Macrophages, subset of dendritic cells, astrocytes, stromal and epithelial cells. |
| Function | Regulate cell fate decisions in tissues, neurogenesis, Th2 polarization, and Treg induction |
| Ligand/Receptor | Notch |

Cell Type Astrocytes, Dendritic cells, Epithelial cells, Macrophages, Monocytes
Biology Area Cardiovascular Biology, Immunology, Neuroscience
Molecular Family CD Molecules
Antigen References

1. Oda T, *et al.* 1997. *Nat. Genet.* 16:235.
2. Li L, *et al.* 1997. *Nat. Genet.* 16:243.
3. Guarnaccia C, *et al.* 2004. *FEBS Letters.* 574:156.
4. High FA, *et al.* 2008. *Proc. Natl. Acad. Sci.* 105:1955.
5. Kopan R and Ilagan MX. 2009. *Cell.* 137:216.
6. Reedijk M, *et al.* 2005. *Cancer Res.* 65:8530.
7. Grochowski CM, *et al.* 2016. *Gene.* 576:381.
8. Hofmann JJ, *et al.* 2012. *Development.* 139:4449.

Gene ID [182](#)

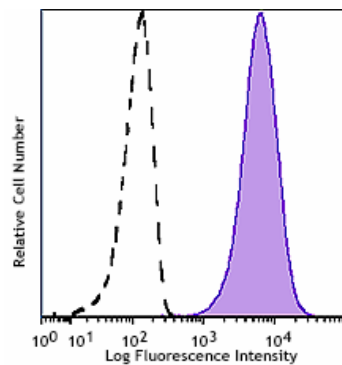
Related Protocols

[Cell Surface Flow Cytometry Staining Protocol](#)

Other Formats

Purified anti-human CD339 (Jagged 1), Alexa Fluor® 647 anti-human CD339 (Jagged 1) Antibody, APC anti-human CD339 (Jagged 1) Antibody, PE anti-human CD339 (Jagged 1)

Product Data



Human U251 glioblastoma cells were stained with anti-human CD339 (Jagged 1) PE (clone W16199B) (filled histogram) or rat IgG2a, κ isotype control PE (open histogram).

For research use only. Not for diagnostic use. Not for resale. BioLegend will not be held responsible for patent infringement or other violations that may occur with the use of our products.

*These products may be covered by one or more Limited Use Label Licenses (see the BioLegend Catalog or our website, www.biolegend.com/ordering#license). BioLegend products may not be transferred to third parties, resold, modified for resale, or used to manufacture commercial products, reverse engineer functionally similar materials, or to provide a service to third parties without written approval of BioLegend. By use of these products you accept the terms and conditions of all applicable Limited Use Label Licenses. Unless otherwise indicated, these products are for research use only and are not intended for human or animal diagnostic, therapeutic or commercial use.

BioLegend Inc., 8999 BioLegend Way, San Diego, CA 92121 www.biolegend.com
Toll-Free Phone: 1-877-Bio-Legend (246-5343) Phone: (858) 768-5800 Fax: (877) 455-9587