

PE anti-human CXCL16 Antibody

Catalog# / Size	360803 / 25 tests 360804 / 100 tests
Clone	22-19-12
Regulatory Status	RUO
Other Names	SRPSOX, CXCLG16, SR-PSOX
Isotype	Mouse IgG1, κ
Description	<p>CXCL16, a 27 kD chemokine, exists in membrane-bound and soluble forms. Unlike classic chemokines, CXCL16 possesses a mucin-like stalk, a transmembrane domain, and a cytoplasmic tail with a tyrosine phosphorylation domain, allowing it to be expressed on the cell surface. Structurally, it is similar to fractalkine. It is expressed by dendritic cells, monocytes, and T cells. T cells can also migrate in response to CXCL16.</p> <p>CXCL16 can also act as a scavenger receptor on macrophages. Its receptor is CXCR6/Bonzo. It can bind oxidized LDL and thus may play an important role in atherosclerosis. Recent studies have shown a role for CXCL16 in kidney fibrosis and in autoimmunity. CXCL16 is also a co-receptor for HIV.</p>

Product Details

Verified Reactivity	Human
Antibody Type	Monoclonal
Host Species	Mouse
Immunogen	Purified human SR-PSOX-Fc fusion protein
Formulation	Phosphate-buffered solution, pH 7.2, containing 0.09% sodium azide and BSA (origin USA)
Preparation	The antibody was purified by affinity chromatography and conjugated with PE under optimal conditions.
Concentration	Lot-specific (to obtain lot-specific concentration, please enter the lot number in our Concentration and Expiration Lookup or Certificate of Analysis online tools.)
Storage & Handling	The antibody solution should be stored undiluted between 2°C and 8°C, and protected from prolonged exposure to light. Do not freeze.
Application	FC - Quality tested
Recommended Usage	Each lot of this antibody is quality control tested by immunofluorescent staining with flow cytometric analysis . For flow cytometric staining, the suggested use of this reagent is 5 µl per million cells in 100 µl staining volume or 5 µl per 100 µl of whole blood.
Excitation Laser	Blue Laser (488 nm) Green Laser (532 nm)/Yellow-Green Laser (561 nm)
Application Notes	Additional reported applications (for the relevant formats of this clone) include: <i>in vitro</i> blocking of chemotactic activity of CXCR6 expressing cells ¹ . Clone 22-19-12 recognizes the chemokine domain of CXCL16 and has been shown to inhibit chemotactic activity to CXCR6-expressing cells by soluble CXCL16. ¹
Application References	1. Shimaoka T, <i>et al.</i> 2003. <i>J. Immunol.</i> 171:1647. (FC, Block)
(PubMed link indicates BioLegend citation)	
Product Citations	1. Gouwy M, <i>et al.</i> 2016. PLoS One. 11:e0166006. PubMed
RRID	AB_2563010 (BioLegend Cat. No. 360803)

Antigen Details

Structure	~27 kD, exists as a membrane bound and soluble forms
Distribution	Produced by dendritic cells and T cells
Function	Binds to oxidized LDL and may play an important role in atherosclerosis
Interaction	Interacts with CXCR6/Bonzo
Ligand/Receptor	CXCR6
Cell Type	Dendritic cells, T cells
Biology Area	Immunology, Innate Immunity
Molecular Family	Cytokines/Chemokines
Antigen References	<ol style="list-style-type: none"> 1. Matloubian M, <i>et al.</i> 2000. <i>Nat. Immunol.</i> 1:298. 2. Wilbanks A, <i>et al.</i> 2001. <i>J. Immunol.</i> 166:5145. 3. Shimaoka T, <i>et al.</i> 2003. <i>J. Immunol.</i> 171:1647. 4. Chandrasekar B, <i>et al.</i> 2004. <i>J. Biol. Chem.</i> 179:3188. 5. Shimaoka T, <i>et al.</i> 2004. <i>J. Leukoc. Biol.</i> 75:267.
Gene ID	58191

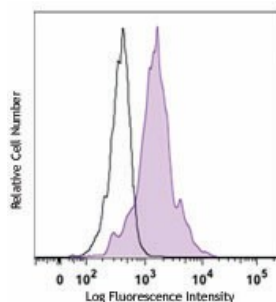
Related Protocols

[Cell Surface Flow Cytometry Staining Protocol](#)

Other Formats

Purified anti-human CXCL16, PE anti-human CXCL16

Product Data



Peripheral blood monocytes were stained with anti-human CXCL16 (clone 22-19-12) PE (filled histogram) or mouse IgG1, κ PE isotype control (open histogram).

For research use only. Not for diagnostic use. Not for resale. BioLegend will not be held responsible for patent infringement or other violations that may occur with the use of our products.

*These products may be covered by one or more Limited Use Label Licenses (see the BioLegend Catalog or our website, www.biolegend.com/ordering#license). BioLegend products may not be transferred to third parties, resold, modified for resale, or used to manufacture commercial products, reverse engineer functionally similar materials, or to provide a service to third parties without written approval of BioLegend. By use of these products you accept the terms and conditions of all applicable Limited Use Label Licenses. Unless otherwise indicated, these products are for research use only and are not intended for human or animal diagnostic, therapeutic or commercial use.

BioLegend Inc., 8999 BioLegend Way, San Diego, CA 92121 www.biolegend.com
 Toll-Free Phone: 1-877-Bio-Legend (246-5343) Phone: (858) 768-5800 Fax: (877) 455-9587

