

PE anti-human CXCR7 Antibody

Catalog# / Size	391403 / 25 tests 391404 / 100 tests
Clone	10D1-J16
Regulatory Status	RUO
Other Names	Chemokine (C-X-C motif) receptor 7, RDC1, CMKOR1, GPR159, ACKR3
Isotype	Mouse IgG2a, κ
Description	CXCR7, also known as RDC1, belongs to a subgroup of C-X-C chemokine receptors, which are part of a large protein family of G protein-coupled receptors (GPCR). CXCR7 binds with a high-affinity to CXCL12/SDF-1 and CXCL11/I-TAC, which regulates the trafficking and activation of leukocytes. It is also a co-receptor for the entry of HIV-1. The binding of a ligand to CXCR7 induces proliferation and migration of immature neurons, glia, and their precursors. CXCR7 expression occurs on a wide variety of tissues and cells including monocytes, B cells, T cells, and mature dendritic cells. Surface expression of CXCR7 has been also reported in tumor cells, activated endothelial cells, and fetal liver cells.

Product Details

Verified Reactivity	Human
Antibody Type	Monoclonal
Host Species	Mouse
Formulation	Phosphate-buffered solution, pH 7.2, containing 0.09% sodium azide and BSA (origin USA)
Preparation	The antibody was purified by affinity chromatography and conjugated with PE under optimal conditions.
Concentration	Lot-specific (to obtain lot-specific concentration, please enter the lot number in our Concentration and Expiration Lookup or Certificate of Analysis online tools.)
Storage & Handling	The antibody solution should be stored undiluted between 2°C and 8°C, and protected from prolonged exposure to light. Do not freeze.
Application	FC - Quality tested
Recommended Usage	Each lot of this antibody is quality control tested by immunofluorescent staining with flow cytometric analysis . For flow cytometric staining, the suggested use of this reagent is 5 μ l per million cells in 100 μ l staining volume or 5 μ l per 100 μ l of whole blood.
Excitation Laser	Blue Laser (488 nm) Green Laser (532 nm)/Yellow-Green Laser (561 nm)
Product Citations	1. Doijen J, <i>et al.</i> 2017. PLoS One. 10.1371/journal.pone.0185354. PubMed
RRID	AB_2565680 (BioLegend Cat. No. 391403) AB_2565681 (BioLegend Cat. No. 391404)

Antigen Details

Structure	G Protein-Coupled Receptor super family
Distribution	Monocytes, B cells, T cells, and mature dendritic cells.
Function	Regulates trafficking and activation of leukocytes.
Ligand/Receptor	CXCL12/SDF-1 and CXCL11/I-TAC.

Cell Type	Monocytes, B cells, T cells, Dendritic cells
Biology Area	Cell Biology, Immunology, Signal Transduction
Molecular Family	CD Molecules, Cytokine/Chemokine Receptors, GPCR
Antigen References	<ol style="list-style-type: none"> 1. Torossian F, <i>et al.</i> 2014. <i>Blood</i> 123:191. 2. Walentowicz-Sadlecka M, <i>et al.</i> 2014. <i>PLoS One</i> 1:e84629. 3. Yates TJ, <i>et al.</i> 2013. <i>Cancer</i> 119:61. 4. Burns JM, <i>et al.</i> 2006. <i>J. Exp. Med.</i> 203:2201. 5. Infantino S, <i>et al.</i> 2006. <i>J. Immunol.</i> 176:2197.
Gene ID	57007

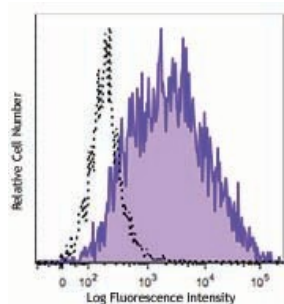
Related Protocols

[Cell Surface Flow Cytometry Staining Protocol](#)

Other Formats

Purified anti-human CXCR7, PE anti-human CXCR7, APC anti-human CXCR7

Product Data



CXCR7 transfected L1.2 cells were stained with CXCR7 (clone 10D1-J16) PE (filled histogram) or mouse IgG2a, κ PE isotype control (open histogram).

For research use only. Not for diagnostic use. Not for resale. BioLegend will not be held responsible for patent infringement or other violations that may occur with the use of our products.

*These products may be covered by one or more Limited Use Label Licenses (see the BioLegend Catalog or our website, www.biolegend.com/ordering#license). BioLegend products may not be transferred to third parties, resold, modified for resale, or used to manufacture commercial products, reverse engineer functionally similar materials, or to provide a service to third parties without written approval of BioLegend. By use of these products you accept the terms and conditions of all applicable Limited Use Label Licenses. Unless otherwise indicated, these products are for research use only and are not intended for human or animal diagnostic, therapeutic or commercial use.

BioLegend Inc., 8999 BioLegend Way, San Diego, CA 92121 www.biolegend.com
Toll-Free Phone: 1-877-Bio-Legend (246-5343) Phone: (858) 768-5800 Fax: (877) 455-9587