

## PE/Dazzle™ 594 anti-human CD279 (PD-1) Antibody

<b>Catalog# / Size</b>	329939 / 25 tests 329940 / 100 tests
<b>Clone</b>	EH12.2H7
<b>Regulatory Status</b>	RUO
<b>Other Names</b>	PD-1
<b>Isotype</b>	Mouse IgG1, κ
<b>Description</b>	Programmed cell death 1 (PD-1), also known as CD279, is a 55 kD member of the immunoglobulin superfamily. CD279 contains the immunoreceptor tyrosine-based inhibitory motif (ITIM) in the cytoplasmic region and plays a key role in peripheral tolerance and autoimmune disease. CD279 is expressed predominantly on activated T cells, B cells, and myeloid cells. PD-L1 (B7-H1) and PD-L2 (B7-DC) are ligands of CD279 (PD-1) and are members of the B7 gene family. Evidence suggests overlapping functions for these two PD-1 ligands and their constitutive expression on some normal tissues and upregulation on activated antigen-presenting cells. Interaction of CD279 ligands results in inhibition of T cell proliferation and cytokine secretion.

### Product Details

<b>Verified Reactivity</b>	Human
<b>Reported Reactivity</b>	African Green, Baboon, Chimpanzee, Common Marmoset, Cynomolgus, Rhesus, Squirrel Monkey
<b>Antibody Type</b>	Monoclonal
<b>Host Species</b>	Mouse
<b>Formulation</b>	Phosphate-buffered solution, pH 7.2, containing 0.09% sodium azide and BSA (origin USA)
<b>Preparation</b>	The antibody was purified by affinity chromatography and conjugated with PE/Dazzle™ 594 under optimal conditions.
<b>Concentration</b>	Lot-specific (to obtain lot-specific concentration, please enter the lot number in our <a href="#">Concentration and Expiration Lookup</a> or <a href="#">Certificate of Analysis</a> online tools.)
<b>Storage &amp; Handling</b>	The antibody solution should be stored undiluted between 2°C and 8°C, and protected from prolonged exposure to light. <b>Do not freeze.</b>
<b>Application</b>	<a href="#">FC - Quality tested</a>
<b>Recommended Usage</b>	Each lot of this antibody is quality control tested by <a href="#">immunofluorescent staining with flow cytometric analysis</a> . For flow cytometric staining, the suggested use of this reagent is 5 µl per million cells in 100 µl staining volume or 5 µl per 100 µl of whole blood.  * PE/Dazzle™ 594 has a maximum excitation of 566 nm and a maximum emission of 610 nm.
<b>Excitation Laser</b>	Blue Laser (488 nm) Green Laser (532 nm)/Yellow-Green Laser (561 nm)
<b>Application Notes</b>	Additional reported applications (for the relevant formats) include: blocking of ligand binding <sup>1-3</sup> , immunohistochemical staining of paraformaldehyde fixed frozen sections <sup>13</sup> , and spatial biology (IBEX) <sup>15,16</sup> . The LEAF™ purified antibody (Endotoxin <0.1 EU/µg, Azide-Free, 0.2 µm filtered) is recommended for functional assays (Cat. No. 329911 and 329912). For highly sensitive assays, we recommend Ultra-LEAF™ purified antibody (Cat. No. 329926) with a lower endotoxin limit than standard LEAF™ purified antibodies (Endotoxin <0.01 EU/µg).
<b>Application References</b>	1. Dorfman DM, <i>et al.</i> 2006 <i>Am. J. Surg. Pathol.</i> 30:802. (FA) 2. Radziewicz H, <i>et al.</i> 2007. <i>J. Virol.</i> 81:2545. (FA) 3. Velu V, <i>et al.</i> 2007. <i>J. Virol.</i> 81:5819. (FA) 4. Zahn RC, <i>et al.</i> 2008. <i>J. Virol.</i> 82:11577. <a href="#">PubMed</a> 5. Chang WS, <i>et al.</i> 2008. <i>J. Immunol.</i> 181:6707. (FC) <a href="#">PubMed</a>
<b>(PubMed link indicates BioLegend citation)</b>	

6. Nakamoto N, *et al.* 2009. *PLoS Pathog.* 5:e1000313. (FA)
7. Jones RB, *et al.* 2009. *J. Virol.* 83:8722. (FC) [PubMed](#)
8. Vojnov L, *et al.* 2010. *J. Virol.* 84:753. (FC) [PubMed](#)
9. Radziejewicz H, *et al.* 2010. *J. Immunol.* 184:2410. (FC) [PubMed](#)
10. Monteriro P, *et al.* 2011. *J. Immunol.* 186:4618. [PubMed](#)
11. Conrad J, *et al.* 2011. *J. Immunol.* 186:6871. [PubMed](#)
12. Salisch NC, *et al.* 2010. *J. Immunol.* 184:476. (Rhesus reactivity)
13. Li H and Pauza CD. 2015. *Eur. J. Immunol.* 45:298. (IHC)
14. Peterson VM, *et al.* 2017. *Nat. Biotechnol.* 35:936. (PG)
15. Radtke AJ, *et al.* 2020. *Proc Natl Acad Sci USA.* 117:33455-33465. (SB) [PubMed](#)
16. Radtke AJ, *et al.* 2022. *Nat Protoc.* 17:378-401. (SB) [PubMed](#)

#### Product Citations

1. Taylor HE, *et al.* 2018. *AIDS.* 32:2847. [PubMed](#)
2. Muliaditan T, *et al.* 2021. *Cell Rep Med.* 2:100457. [PubMed](#)
3. Obradovic A, *et al.* 2021. *Cell.* 184(11):2988-3005.e16. [PubMed](#)
4. Valpione S, *et al.* 2020. *Nat Cancer.* 0:1875. [PubMed](#)
5. Tarke A, *et al.* 2022. *Cell.* 185:847. [PubMed](#)
6. Naik A, *et al.* 2021. *J Cell Mol Med.* 25:10376. [PubMed](#)
7. NULL, *et al.* 2022. *Cell.* 185:916. [PubMed](#)
8. Mathewson ND, *et al.* 2021. *Cell.* 184(5):1281-1298.e26. [PubMed](#)
9. Hara T, *et al.* 2021. *Cancer Cell.* 39(6):779-792.e11. [PubMed](#)
10. Toor SM, *et al.* 2018. *Clin Exp Immunol.* 191:189. [PubMed](#)
11. Högelin KA, *et al.* 2021. *iScience.* 24:103078. [PubMed](#)
12. Cordero H, *et al.* 2021. *Nat Commun.* 12:5761. [PubMed](#)

#### RRID

AB\_2563658 (BioLegend Cat. No. 329939)  
 AB\_2563659 (BioLegend Cat. No. 329940)

## Antigen Details

<b>Structure</b>	Immunoglobulin superfamily
<b>Distribution</b>	Transiently expressed on CD4 <sup>+</sup> CD8 <sup>+</sup> thymocytes; upregulated in thymocytes and splenic T and B lymphocytes; expressed on activated myeloid cells
<b>Ligand/Receptor</b>	B7-H1 (also known as PD-L1) and B7-DC (PD-L2)
<b>Cell Type</b>	B cells, Lymphocytes, T cells, Thymocytes, Tregs
<b>Biology Area</b>	Cancer Biomarkers, Immunology, Inhibitory Molecules
<b>Molecular Family</b>	CD Molecules, Immune Checkpoint Receptors
<b>Gene ID</b>	<a href="#">5133</a>

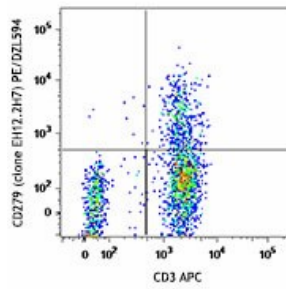
## Related Protocols

[Cell Surface Flow Cytometry Staining Protocol](#)

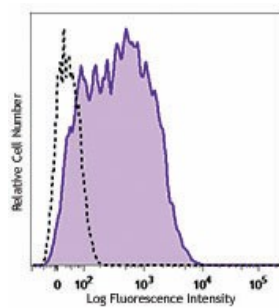
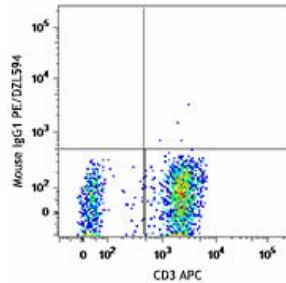
## Other Formats

Brilliant Violet 421™ anti-human CD279 (PD-1), Purified anti-human CD279 (PD-1), FITC anti-human CD279 (PD-1), PE anti-human CD279 (PD-1), APC anti-human CD279 (PD-1), Alexa Fluor® 647 anti-human CD279 (PD-1), PerCP/Cyanine5.5 anti-human CD279 (PD-1), APC/Cyanine7 anti-human CD279 (PD-1), Pacific Blue™ anti-human CD279 (PD-1), PE/Cyanine7 anti-human CD279 (PD-1), Purified anti-human CD279 (PD-1) (Maxpar® Ready), Brilliant Violet 605™ anti-human CD279 (PD-1), Ultra-LEAF™ Purified anti-human CD279 (PD-1), Brilliant Violet 711™ anti-human CD279 (PD-1), Brilliant Violet 785™ anti-human CD279 (PD-1), Brilliant Violet 510™ anti-human CD279 (PD-1), Biotin anti-human CD279 (PD-1), PE/Dazzle™ 594 anti-human CD279 (PD-1), Alexa Fluor® 488 anti-human CD279 (PD-1), PerCP anti-human CD279 (PD-1), GoInVivo™ Purified anti-human CD279 (PD-1), Brilliant Violet 650™ anti-human CD279 (PD-1), Alexa Fluor® 700 anti-human CD279 (PD-1), APC/Fire™ 750 anti-human CD279 (PD-1), TotalSeq™-A0088 anti-human CD279 (PD-1), TotalSeq™-B0088 anti-human CD279 (PD-1), TotalSeq™-C0088 anti-human CD279 (PD-1), Brilliant Violet 750™ anti-human CD279 (PD-1), TotalSeq™-D0088 anti-human CD279 (PD-1), PE/Fire™ 640 anti-human CD279 (PD-1), PE/Cyanine5 anti-human CD279 (PD-1)

## Product Data



Human peripheral blood lymphocytes were stained with CD3 APC and CD279 (clone EH12.2H7) PE/Dazzle™ 594 (above) or mouse IgG1 PE/Dazzle™ 594 isotype control (below).



PHA-stimulated (day 3) human peripheral blood lymphocytes stained with CD279 (clone EH12.2H7) PE/Dazzle™ 594 (filled histogram) or mouse IgG1 PE/Dazzle™ 594 (open histogram).

For research use only. Not for diagnostic use. Not for resale. BioLegend will not be held responsible for patent infringement or other violations that may occur with the use of our products.

\*These products may be covered by one or more Limited Use Label Licenses (see the BioLegend Catalog or our website, [www.biolegend.com/ordering#license](http://www.biolegend.com/ordering#license)). BioLegend products may not be transferred to third parties, resold, modified for resale, or used to manufacture commercial products, reverse engineer functionally similar materials, or to provide a service to third parties without written approval of BioLegend. By use of these products you accept the terms and conditions of all applicable Limited Use Label Licenses. Unless otherwise indicated, these products are for research use only and are not intended for human or animal diagnostic, therapeutic or commercial use.

BioLegend Inc., 8999 BioLegend Way, San Diego, CA 92121 [www.biolegend.com](http://www.biolegend.com)  
Toll-Free Phone: 1-877-Bio-Legend (246-5343) Phone: (858) 768-5800 Fax: (877) 455-9587