

PE/Dazzle™ 594 anti-human IgM Antibody

Catalog# / Size	314529 / 25 tests 314530 / 100 tests
Clone	MHM-88
Regulatory Status	RUO
Other Names	Immunoglobulin M
Isotype	Mouse IgG1, κ
Description	IgM is the first immunoglobulin made by B cells in the immune response. Surface IgM is expressed on immature and mature B cells, while IgM heavy (μ) chain is expressed intracellularly in pre-B cells.

Product Details

Verified Reactivity	Human
Reported Reactivity	African Green, Baboon, Cynomolgus, Rhesus
Antibody Type	Monoclonal
Host Species	Mouse
Immunogen	Human Ig cocktail
Formulation	Phosphate-buffered solution, pH 7.2, containing 0.09% sodium azide and BSA (origin USA)
Preparation	The antibody was purified by affinity chromatography and conjugated with PE/Dazzle™ 594 under optimal conditions.
Concentration	Lot-specific (to obtain lot-specific concentration, please enter the lot number in our Concentration and Expiration Lookup or Certificate of Analysis online tools.)
Storage & Handling	The antibody solution should be stored undiluted between 2°C and 8°C, and protected from prolonged exposure to light. Do not freeze.
Application	FC - Quality tested
Recommended Usage	Each lot of this antibody is quality control tested by immunofluorescent staining with flow cytometric analysis . For flow cytometric staining, the suggested use of this reagent is 5 μl per million cells in 100 μl staining volume. * PE/Dazzle™ 594 has a maximum excitation of 566 nm and a maximum emission of 610 nm.
Excitation Laser	Blue Laser (488 nm) Green Laser (532 nm)/Yellow-Green Laser (561 nm)
Application Notes	MHM-88 antibody reacts with both soluble and membrane human immunoglobulin M (IgM). It does not react with other Ig isotypes. Additional reported applications (for the relevant formats) include: use as a primary or secondary reagent for ELISA analysis. Due to the presence of excess soluble IgM in whole blood, which competes for antibody binding, staining for IgM on cells in whole blood is not recommended.
Application References	1. Perez-Shiyama C, <i>et al.</i> 2014. <i>J Immunol.</i> 192:5192. PubMed
(PubMed link indicates BioLegend citation)	
Product Citations	1. Jennewein MF, <i>et al.</i> 2021. <i>Cell Reports.</i> 36(2):109353. PubMed 2. Lindsmith LC, <i>et al.</i> 2020. <i>Cell Mol Gastroenterol Hepatol.</i> 0.586805556. PubMed 3. Kreutmair S, <i>et al.</i> 2021. <i>Immunity.</i> . PubMed 4. Cohen KW, <i>et al.</i> 2021. <i>Cell Reports Medicine.</i> 2(7):100354. PubMed

5. Seydoux E, *et al.* 2020. Immunity. 53:98. [PubMed](#)

RRID AB_2566482 (BioLegend Cat. No. 314529)
AB_2566483 (BioLegend Cat. No. 314530)

Antigen Details

Structure	Ig family
Distribution	B cells
Function	B cell differentiation, humoral immune response; cross-linking surface IgM induces apoptosis
Cell Type	B cells
Biology Area	Immunology
Gene ID	3507

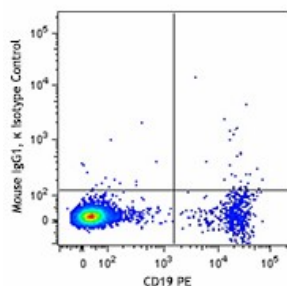
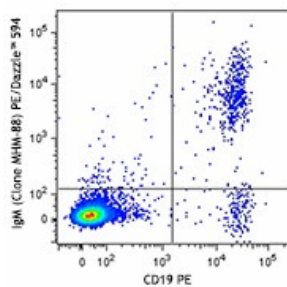
Related Protocols

[Cell Surface Flow Cytometry Staining Protocol](#)

Other Formats

Purified anti-human IgM, PE anti-human IgM, Biotin anti-human IgM, FITC anti-human IgM, APC anti-human IgM, PerCP/Cyanine5.5 anti-human IgM, Pacific Blue™ anti-human IgM, Brilliant Violet 421™ anti-human IgM, APC/Cyanine7 anti-human IgM, Brilliant Violet 570™ anti-human IgM, Brilliant Violet 510™ anti-human IgM, Brilliant Violet 605™ anti-human IgM, Brilliant Violet 650™ anti-human IgM, Purified anti-human IgM (Maxpar® Ready), PE/Dazzle™ 594 anti-human IgM, PE/Cyanine7 anti-human IgM, Alexa Fluor® 488 anti-human IgM, Alexa Fluor® 647 anti-human IgM, Alexa Fluor® 700 anti-human IgM, Brilliant Violet 711™ anti-human IgM, TotalSeq™-A0136 anti-human IgM, TotalSeq™-C0136 anti-human IgM, Brilliant Violet 785™ anti-human IgM, APC/Fire™ 750 anti-human IgM, TotalSeq™-B0136 anti-human IgM, Spark Violet™ 423 anti-human IgM Antibody, TotalSeq™-D0136 anti-human IgM, Spark Blue™ 550 anti-human IgM

Product Data



Overnight cultured human peripheral blood mononuclear cells were stained with CD19 PE and anti-IgM (clone MHM-88) PE/Dazzle™ 594 (top) or mouse IgG1, κ PE/Dazzle™ 594 isotype control (bottom). Data shown is gated on lymphocyte population.

For research use only. Not for diagnostic use. Not for resale. BioLegend will not be held responsible for patent infringement or other violations that may occur with the use of our products.

*These products may be covered by one or more Limited Use Label Licenses (see the BioLegend Catalog or our website, www.biolegend.com/ordering#license). BioLegend products may not be transferred to third parties, resold, modified for resale, or used to manufacture commercial products, reverse engineer functionally similar materials, or to provide a service to third parties without written approval of BioLegend. By use of these products you accept the terms and conditions of all applicable Limited Use Label Licenses. Unless otherwise indicated, these products are for research use only and are not intended for human or animal diagnostic, therapeutic or commercial use.

BioLegend Inc., 8999 BioLegend Way, San Diego, CA 92121 www.biolegend.com
Toll-Free Phone: 1-877-Bio-Legend (246-5343) Phone: (858) 768-5800 Fax: (877) 455-9587