

## PerCP anti-human CD14 Antibody

<b>Catalog# / Size</b>	325631 / 25 tests 325632 / 100 tests
<b>Clone</b>	HCD14
<b>Regulatory Status</b>	RUO
<b>Other Names</b>	LPS receptor
<b>Isotype</b>	Mouse IgG1, κ
<b>Description</b>	CD14 is a 53-55 kD glycosylphosphatidylinositol (GPI)-linked membrane glycoprotein also known as LPS receptor. CD14 is expressed at high levels on monocytes and macrophages, and at lower levels on granulocytes. Some dendritic cell populations such as interfollicular dendritic cells, reticular dendritic cells, and Langerhans cells have also been reported to express CD14. As a high-affinity receptor for LPS, CD14 is involved in the clearance of gram-negative pathogens and in the upregulation of adhesion molecules and cytokines expression in monocytes and neutrophils.

### Product Details

<b>Verified Reactivity</b>	Human
<b>Antibody Type</b>	Monoclonal
<b>Host Species</b>	Mouse
<b>Formulation</b>	Phosphate-buffered solution, pH 7.2, containing 0.09% sodium azide and BSA (origin USA)
<b>Preparation</b>	The antibody was purified by affinity chromatography and conjugated with PerCP under optimal conditions.
<b>Concentration</b>	Lot-specific (to obtain lot-specific concentration, please enter the lot number in our <a href="#">Concentration and Expiration Lookup</a> or <a href="#">Certificate of Analysis</a> online tools.)
<b>Storage &amp; Handling</b>	The antibody solution should be stored undiluted between 2°C and 8°C, and protected from prolonged exposure to light. <b>Do not freeze.</b>
<b>Application</b>	<a href="#">FC - Quality tested</a>
<b>Recommended Usage</b>	Each lot of this antibody is quality control tested by <a href="#">immunofluorescent staining with flow cytometric analysis</a> . For flow cytometric staining, the suggested use of this reagent is 5 µl per million cells in 100 µl staining volume or 5 µl per 100 µl of whole blood.  * PerCP has a maximum absorption of 482 nm and a maximum emission of 675 nm.
<b>Excitation Laser</b>	Blue Laser (488 nm)
<b>Application Notes</b>	Additional reported applications (for the relevant formats) include: immunofluorescence microscopy. This clone was tested in-house and does not work on formalin fixed paraffin-embedded (FFPE) tissue.
<b>Application References</b>	<ol style="list-style-type: none"> <li>McMichael A, <i>et al.</i> 1987. Leucocyte Typing III. Oxford University Press. New York.</li> <li>Knapp W, <i>et al.</i> Eds. 1989. Leucocyte Typing IV. Oxford University Press. New York.</li> <li>Schlossman S, <i>et al.</i> Eds. 1995. Leucocyte Typing V. Oxford University Press. New York.</li> </ol>
<b>(PubMed link indicates BioLegend citation)</b>	
<b>Product Citations</b>	<ol style="list-style-type: none"> <li>Torres-Ruiz J, <i>et al.</i> 2020. J Transl Med. 18:125. <a href="#">PubMed</a></li> <li>Christopher S Garris <i>et al.</i> 2018. Immunity. 49(6):1148-1161 . <a href="#">PubMed</a></li> <li>Turner JS, <i>et al.</i> 2021. Nature. 596:109. <a href="#">PubMed</a></li> <li>Torres-Ruiz J, <i>et al.</i> 2021. Front Immunol. 12:689966. <a href="#">PubMed</a></li> <li>Torres-Ruiz J, <i>et al.</i> 2021. Cells. 10: . <a href="#">PubMed</a></li> <li>Xu L, <i>et al.</i> 2022. Front Oncol. 12:967982. <a href="#">PubMed</a></li> <li>Walk J, <i>et al.</i> 2019. Nat Commun. 10:874. <a href="#">PubMed</a></li> <li>Miao L, <i>et al.</i> 2021. Clin Transl Med. 11:e395. <a href="#">PubMed</a></li> </ol>

9. Martin Monreal MT, *et al.* 2021. *Front Immunol.* 12:716250. [PubMed](#)
10. Hardman CS, *et al.* 2021. *Sci Immunol.* 6:. [PubMed](#)
11. Mudd PA, *et al.* 2022. *Cell.* 185:603. [PubMed](#)
12. Nowak W, *et al.* 2020. *EBioMedicine.* 50:290-305.. [PubMed](#)
13. Keck S, *et al.* 2021. *Cellular and Molecular Gastroenterology and Hepatology.* 12(2):507-545. [PubMed](#)

**RRID** AB\_2563327 (BioLegend Cat. No. 325631)  
 AB\_2563328 (BioLegend Cat. No. 325632)

## Antigen Details

<b>Structure</b>	GPI-linked membrane glycoprotein, 53-55 kD
<b>Distribution</b>	Monocytes, macrophages, granulocytes (low)
<b>Function</b>	LPS receptor, clearance of Gram-negative pathogens
<b>Ligand/Receptor</b>	LPS
<b>Cell Type</b>	Granulocytes, Macrophages, Monocytes, Neutrophils
<b>Biology Area</b>	Cell Biology, Immunology, Innate Immunity, Neuroinflammation, Neuroscience
<b>Molecular Family</b>	CD Molecules
<b>Antigen References</b>	1. Stocks S, <i>et al.</i> 1990. <i>Biochem. J.</i> 268:275. 2. Wright S, <i>et al.</i> 1990. <i>Science</i> 249:1434.
<b>Gene ID</b>	<a href="#">929</a>

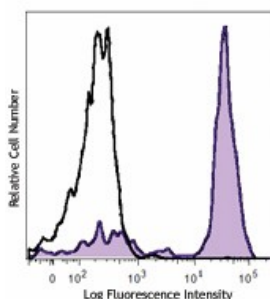
## Related Protocols

[Cell Surface Flow Cytometry Staining Protocol](#)

## Other Formats

PerCP anti-human CD14, Purified anti-human CD14, FITC anti-human CD14, PE anti-human CD14, APC anti-human CD14, Alexa Fluor® 488 anti-human CD14, Alexa Fluor® 647 anti-human CD14, Alexa Fluor® 700 anti-human CD14, Pacific Blue™ anti-human CD14, PE/Cyanine7 anti-human CD14, APC/Cyanine7 anti-human CD14, PerCP/Cyanine5.5 anti-human CD14, Biotin anti-human CD14, Brilliant Violet 421™ anti-human CD14, Alexa Fluor® 594 anti-human CD14, PE/Dazzle™ 594 anti-human CD14, Spark Blue™ 574 anti-human CD14

## Product Data



Human peripheral blood monocytes stained with CD14 (clone HCD14) PerCP (filled histogram) or mouse IgG1, κ PerCP isotype control (open histogram).

For research use only. Not for diagnostic use. Not for resale. BioLegend will not be held responsible for patent infringement or other violations that may occur with the use of our products.

\*These products may be covered by one or more Limited Use Label Licenses (see the BioLegend Catalog or our website, [www.biolegend.com/ordering#license](http://www.biolegend.com/ordering#license)).

BioLegend products may not be transferred to third parties, resold, modified for resale, or used to manufacture commercial products, reverse engineer functionally similar materials, or to provide a service to third parties without written approval of BioLegend. By use of these products you accept the terms and conditions of all applicable Limited Use Label Licenses. Unless otherwise indicated, these products are for research use only and are not intended for human or animal diagnostic, therapeutic or commercial use.

BioLegend Inc., 8999 BioLegend Way, San Diego, CA 92121 [www.biolegend.com](http://www.biolegend.com)  
Toll-Free Phone: 1-877-Bio-Legend (246-5343) Phone: (858) 768-5800 Fax: (877) 455-9587